

Section 2A

Transmission

Barnett	2-3,16
Cables	16-17
Clutch Hubs	10-14
Clutch Parts	2-14
C/S & M/S BT 4 Spd	23-28
Kicker, BT 4 Speed	37-41
Kicker, XL	54-58
Ratchet Top	29-30
Rotary Top	31-32
Shifter (4 speed)	33-36
Shifter (5 speed).....	45-46
Shift Kits	32-36
Shift Levers	34-36
Sprocket Covers, XL	54-55
STD Transmission Casing	19
XL Clutch	12-14
XL Shifter Parts	56
XL Trans	51-58

Barnett



Barnett Series K Friction Plates

Kevlar Clutch Plates are the ultimate in durability, smoothness, and strength. The alloy backed plates give smooth precise launches and shifting even under extreme heat. 100% asbestos free.

PCP Application

- 38971** XL 1971-84
- 38972** XL 1984-90
- 38979** As above w/extra plate
- 38973** BT 74 & 80 1941-83 (wet or dry)
- 38974** As above with extra plate

*Note: Models is noted with extra plates (EPK's) have one more plate for 20% more surface.



Stock Replacement Drive Plate 1984-90 (each)

Steel drive plate to fit XL 1984-90 with diaphragm clutch.

- 38908** 36787-84

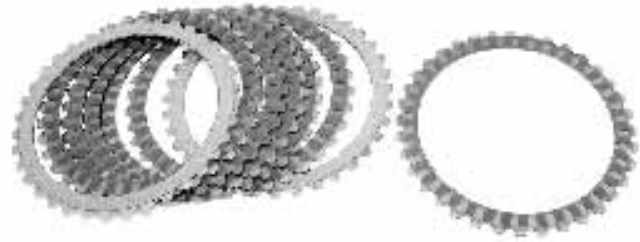


XL Steel Drive Plate for 1971-E1984 Models

Drive Plate made of tough steel by Barnett

PCP Description

- 38909** Sold Each (37992-71A)
- 38910** Set of 8



CF 2000 Carbon Fibre Segmented Plates-Wet

New friction material segments increasing efficiency and plate life. Segmented plates run 25% cooler and torque load is increased by 20%. Compatible with stock steel plates, springs and all oils.

PCP Application

- 38931** XL 1971-84
- 38932** XL 1984-90



Carbon Graphic Clutch for Big Twin 1941-84

Wet or dry clutch kit fits all BT 1941-E84 and provides for smooth, positive, no slip clutch action. Kit includes 5 friction plates made on a steel core using molded carbon fibre friction compound. Kit can be used with an open belt drive, sealed primary or conventional set-up and resists glazing reducing chatter/noisy engagement. Kit is also suitable for high performance applications as it tolerates extreme heat. The porosity of the carbon friction compound adapts perfectly to wet applications.

- 38965** BT 1941-E84



Barnett Heavy-Duty XL Clutch Spring 1984-90

Heavy-duty replacement clutch spring that is 20% stronger than stock and suitable for street applications.

- 38920** 36792-84

Clutch Hub Disc for Big Twin 1936-84

- 38981** Barnett with rivets





Barnett Scorpion Clutch Drive

Kit features over twice as much friction surface area compared to stock clutch. All Scorpion clutches provide a positive engagement and release. Scorpion clutches incorporate 6 heavy duty coil springs. In addition, an extra spring set with a different spring rate is included which allows the clutch to be tuned for street or race application depending on usage. Tunability is easy without the removal of the primary cover. Barnett friction plates are compatible with any primary oil. Each kit is designed to be used with stock type clutch basket.

Big Twin

PCP Application
38943 1936-E84

Sportster

38940 1971-83 Ironhead 1000cc
38941 1984-90 4 Speed



Barnett Heavy Duty Clutch Springs 4 Speed

Clutch springs for all 45's and Big Twins from 1941-E1984

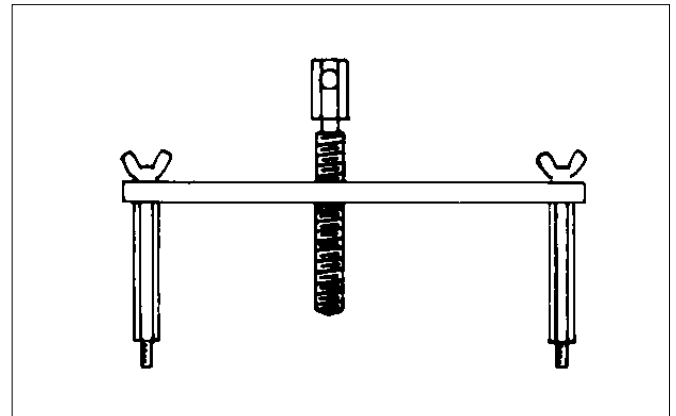
PCP Description
38914 1941-67 (50 lbs @ 1 1/8") (38077-41)
38915 Regular duty BT 1968-E84
38916 Heavy duty 1968-E84 (68 lbs @ 1 1/8") (37077-68)



Barnett Steel Drive Plate

Steel drive plate for 1941-E84 Big Twins. 1941-67 models require 3 plates. 1968-E84 models require 4 plates.

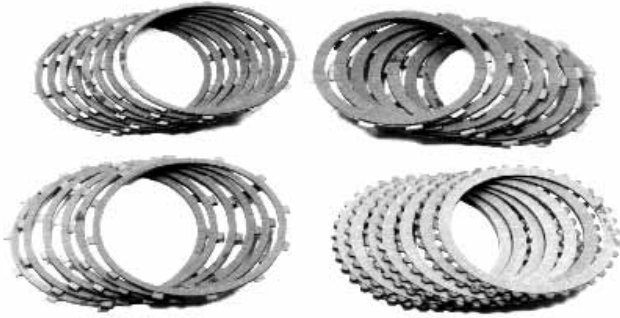
38947 37975-41 (each)



Clutch Puller Tool for Sportster 1971-84 (Jim's)

31481 (except diaphragm clutch)

Alto Clutch



Alto clutch products are manufactured in the USA of friction grabbing clutch material. These kits have two sided fibre plates, bonded on steel, for applications listed. Sold in sets.

PCP	Year	Model
38870	1971-83	Sportster (8)
38871	1984-90	Sportster (7)
38874	1968-83	Big Twin (5)

Steel drive plates by Alto Products Corp. are made in the USA for models listed. **(Sold each).**

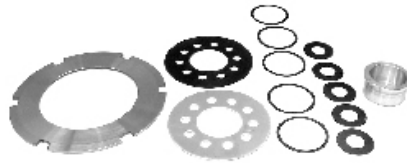
PCP	Year	Model	# Required
38853	1971-83	Sportster	(8)
38857	1941-67	Big Twin	(3)
	1968-83	Big Twin	(4)
38858	1941-67	Big Twin "rattler" style	(3)
	1968-83	Big Twin "rattler" style	(4)



BT Clutch Drive Plates

Replacement steel drive plate for the FL and FX clutch 1941-80. Three required 1941-67 and four required for 1968-80.

PCP	Description (not Barnett)
471	Clutch plate with anti rattle attachment (37975-41)



The Tamer Clutch Insert

The staggered rollers on the clutch hub permit it to oscillate in and out which causes the clutch to engage slightly during disengagement, resulting in a jerking motion. The Tamer holds the clutch shell in the proper location so it won't move when the clutch is disengaged. Fits belt or chain drive Big Twin 1936-E84.

2820 Kit



BDL Clutch Kit BT 1941-84

Includes 5 Kevlar frictions and 4 steel plates. All BDL BT clutch kits are packaged with frictions and steels and a pre-measured stack height for easy installation.

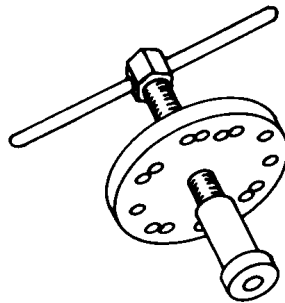
76460



Chrome Clutch Spring Set

Use on 1941-on when exposed on belt drive models. 10 piece kit. Late style springs with a durable chrome finish. (NOT BARNETT.) Replacement for BT 1968-84.

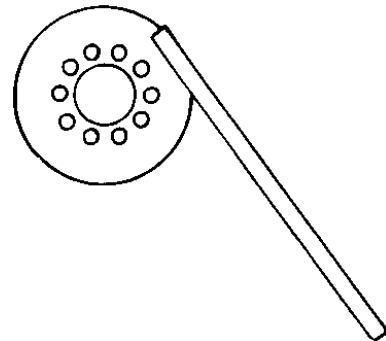
3887



Clutch Hub Puller

Pulls the clutch hub on Harley Big Twin and 45's. Works with either 3, 5 or 10 finger clutch hubs. Also pulls the motor sprocket on Sportsters and Big Twins, the transmission sprocket on Sportsters and the rotor assembly on Big Twins 1970-84 (except diaphragm clutch).

2858 95960-41A

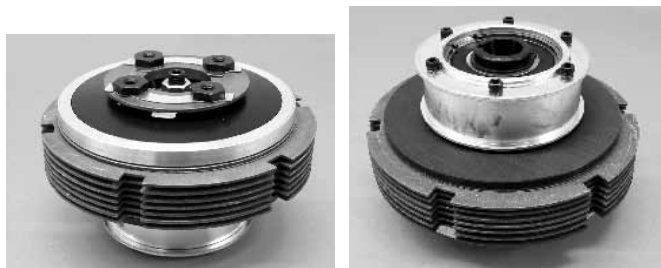


Big Twin Clutch Holding Tool

Keeps the clutch hub from turning on all Big Twins 1936-on (except models with diaphragm clutch) when removing the clutch hub nut.

5826

Clutch



Rivera Pro-Clutch for Big Twins

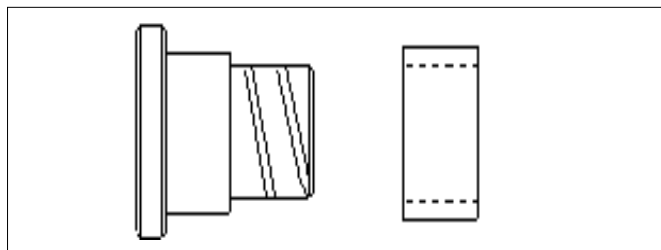
Converts old style clutch packs to smooth diaphragm spring function. Available for early chain or belt drive with wet or dry clutch. Kits includes clutch hub with bearings, clutch discs (friction and steel), diaphragm spring, spring retainer, pressure plate and 4 shoulder bolts.

PCP Clutch Basket Type

76110 1936-84 Chain and belt

76111 1936-84 Belt only

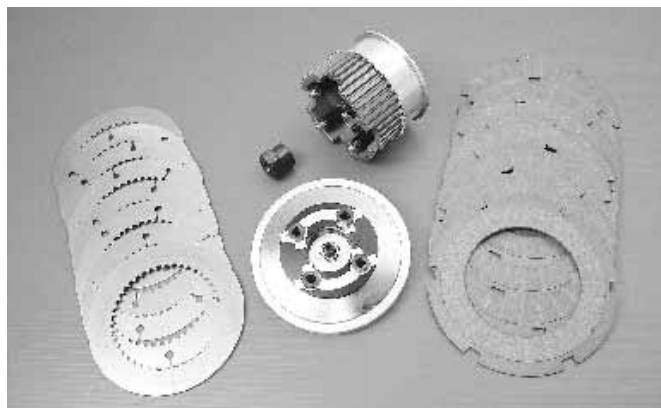
59610 Replacement friction & steel sets for #76110 & #76111



The Tamer 11 for Sportsters

The Tamer 11 is for Sportsters 1971-E84. The Tamer 11 eliminates all jerking and lunging while in gear and stopped. The Tamer 11 will work on both belt and chain drive applications.

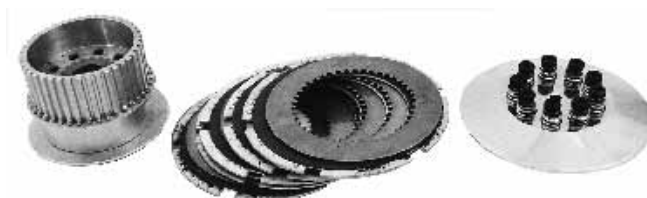
16529



York BT Clutch Assembly 1941-84

Fits with belt or chain drive. Dry clutch systems and offers multiple plate increase in friction. Kits include clutch hub, bearing, clutch discs, diaphragm, spring, retainer pressure plate and bolts.

59860



BDL Competitor Clutch Kit

Kit includes 40mm double row hub bearing, polished pressure plate, Kevlar clutch and 9 springs and shoulder bolts for simple adjustment.

76420 BT with belt or primary chain 1936-84



BDL Replacement Clutch Plates for #76420

PCP Description

76447 5 fibre plates

76448 7 steel plates



38952

BT Clutch Pak Kit

Complete, heavy duty OEM style clutch kit includes bonded to steel clutch or Kevlar friction and 4 steel plates, clutch hub liner with rivets and 10 springs. PCP #38952 includes 3 1/2 bonded plates and 3 steel plates with rattlers, springs and hub liner.

PCP Type Application

38952 Dry Original Police type 1941-67

38953 Dry Original Police type 1968-84

38954 Wet/Dry Kevlar fiber type 1968-84

Clutch Release



Clutch Cable Bracket

Chrome plated bracket attaches to stock type oil tank and holds clutch cable in place.

1301 1965-78 FL and 1971-79 FX (62576-65TA)

27316 1979-84 (62576-79)



Mousetrap Eliminator Bracket

Runs cable directly to clutch. Fits early and late Model Big Twins. Designed to eliminate any cable interference with oil tank or other stock parts.

259 Chrome bent down

27315 Chrome bent up



Chrome "Nostalgic" Clutch Arm Cover

This chrome cover fits over the clutch release arm on all 4-speed Big Twin models from 1936-E84. This decorative item comes complete with a chrome acorn nut and installs easily in seconds.

4789 Sold Each

FL Clutch Rod End Cap Set

Chrome end cap set 1936-65

429



Custom Eliminator Custom Release Lever

Chrome plated clutch release arm works on all Big Twins up to E1979 with stock or custom frame, including old style oil tank with mousetrap eliminator set-up.

261



Clutch Release Finger

Fits 74-80" 4 speeds.

3854 1936-86 when early throwout bearing is used (37070-39B)

37136 Finger 1939-74 (37070-39)



Mousetrap Clutch Release Lever Chrome

Fits 1941-on Big Twins. Also used with jockey shift conversion kit and suicide setup.

263 1936-64 (37051-36)

19622 As above parkerized

Clutch Release Lever

Chrome plated. Replaces 37052-65 for use on FL-FLH 1965-67 with mousetrap, or to install our mousetrap assembly on Big Twins with aluminum primary covers.

4336



Chrome Clutch Release Levers

Chrome replacement clutch release levers for 74" and 80" 4-speed Big Twins. Both levers, whether early or late style, feature a precision machined early style broach for the release finger stud allowing wider fitment than the stock lever.

PCP Description

2446 FL L1979-84 and FX L1979-86 (37054-79A)

3488 FL 1968-E79 and FX 1971-E79 (37053-68)

Clutch Release Kits

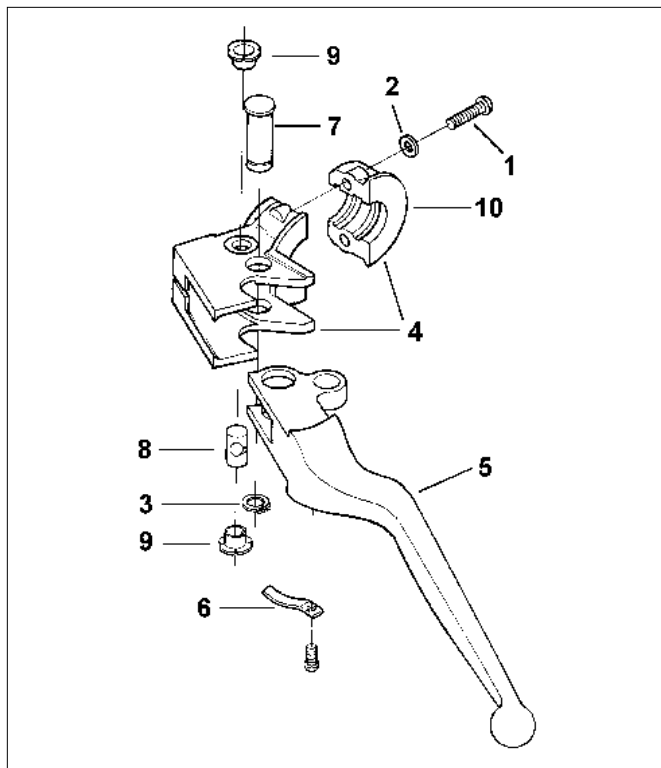


Heavy-Duty Early Style Throw-Out Bearing Kit

Converts the 1975-on needle bearing throw-out units to the early-style heavy-duty ball bearing throw-out assembly. Kit includes a special length clutch pushrod, kicker cover gasket, starter clutch gear and a heavy-duty ball-bearing supported early style throw-out assembly. The bearing is also available as a separate part to replace the original pre-'75 and earlier throw-out bearing in all Big Twins. (Except FLT and FXR.)

1439 Complete kit to convert late 1975-on

1123 Heavy-duty throw-out bearing only for 1939-74 as well as the above conversion kit. (37310-39)



1982-95 Chrome Clutch Lever Components.

#	PCP	OEM	Description
1	24509	4015	Screw (5 pack)
2	12003	6099	Washer (10 pack)
3	11035	11143	Snap ring (10 pack)
4	50206	38608-82A 45044-82	Chrome bracket and clamp
	50205	-	As above with black finish
5	2441	45062-82	Clutch lever 1982-92
6	13003	45021-86	Anti-rattle spring (5 pack)
7	10159	45032-82	Lever pin (each)
8	10164	45036-82	Cable pin 1982-87 (each)
9	13410	45039-68	Pin bushing 1968-81 (10 pack)
10	46007	45044-82	Black clamp
	46005	45044-82	Chrome clamp



Late-Style Throw-Out Bearing Kit for Big Twins

Replacement throw-out bearing kits for Big Twin models (except 5-speed) from 1941-early 1984. Includes the clutch pushrod, release finger, retaining ring, oil slinger, thrust washers, clutch rod bushing, and a late-style super heavy-duty, industrial grade bearing—designed for extreme service demands. With much heavier design requirements than the 1975-up original equipment bearing, it can be fitted as a kit to update earlier models, or the bearing can be purchased separately to replace the standard bearing.

Complete Kit

PCP	Fits
1425	1941-64 (37305-41)
2631	1975-E84 (37305-70)



Late Style Throw-Out Bearing BT 4 Speed

Includes 2 (37311-75A) thrust washer, 37312-75 bearing, and retaining ring (11096). Use on all FX-FL 1975-84, 4 speeds.

4342	Kits
15618	Bearing only
11034	Retainer (10 pack)

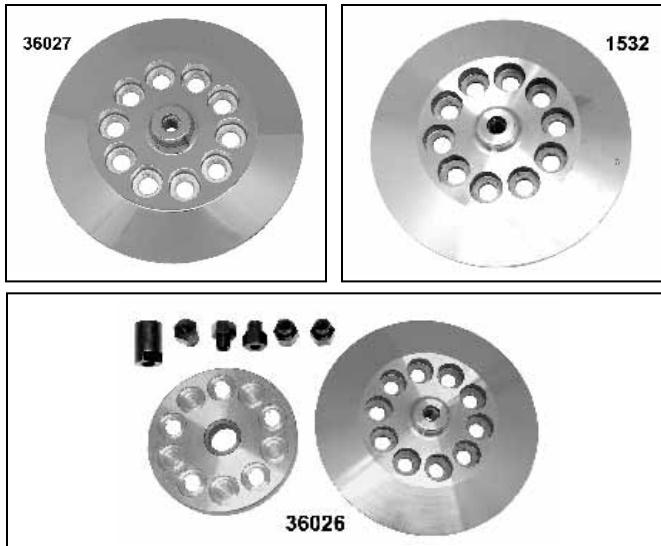


Heavy-Duty Throwout Bearing Kit BT 4 Speed

Kit includes a solid throwout bearing of 24mm (stock is 17mm), larger thrust washers, oil slinger and hardware.

37134	Rebuild kit 1970-84
15633	Bearing only 24mm
36000	Oil slinger (each) (37228-75)

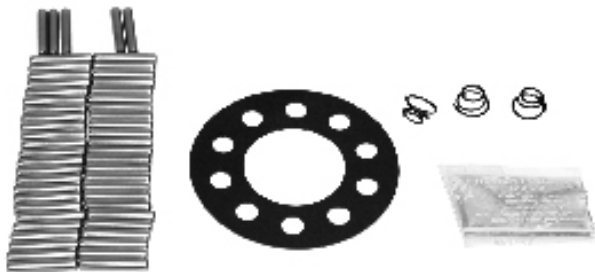
Clutch Parts



Spring Collar Assembly BT 1941-E84

Eliminate wobbly pressure plate to provide a balanced spring load and smooth positive clutch operation with a minimum number of adjustments. The nuts go through the spring collar plate which strengthens and stabilizes the spring collar and allows for three times more spring adjustment. Available for 3 and 5 stud hubs. Outer spring plate available separately.

PCP	Description (for open clutch)
36026	5 Stud kit
1532	Releasing disc, polished
36027	As above, chrome



The Big Fix for 74 & 80 Clutches 1941-83

A superior bearing kit that contains 52 roller bearings that takes the place of the Harley offset roller bearings and bearing retainer resulting in smoother more positive, wobble-free clutch operation.

76438	BDL
73638	Lube tube only



Pushrod Adjusting Screw for Harley

Case hardened for maximum durability. An inexpensive way to solve most problems caused by worn throwout bearing.

Fits Big Twin 1941-E84.

268	With roller bearing (37357-41)
1426	Without roller bearing



Clutch Releasing Disc for Harley

OEM 37805-83T. A precision-machined aluminum pressure plate for Harley Big Twins. Provides the strength, accuracy, heat dissipation and dimensional features needed for high performance and hard riding. Eliminates slipping clutch caused by warped and flexing pressure plate. Gives smoother clutch action. A definite necessity for every BT 1941-E84 except diaphragm clutch models.

1532	3-5-10 Hole Polished
42100	3 Hole Polished
42102	5 Hole Polished



Clutch Retainer 1936-E84

This retainer cures the problem of uncontrolled "Grabby Clutch" found in the antique Harley clutch system. It is designed to hold the clutch drum in place, thus allowing more clearance between the clutch discs, and allowing complete and positive disengagement of the spinning discs. Fits all chain and belt drive primaries from 1936 to early 1984.

Simple, affordable, easy-to-install and comes with a complete illustrated, step-by-step instruction booklet. Don't install a belt drive without our retainer.

755

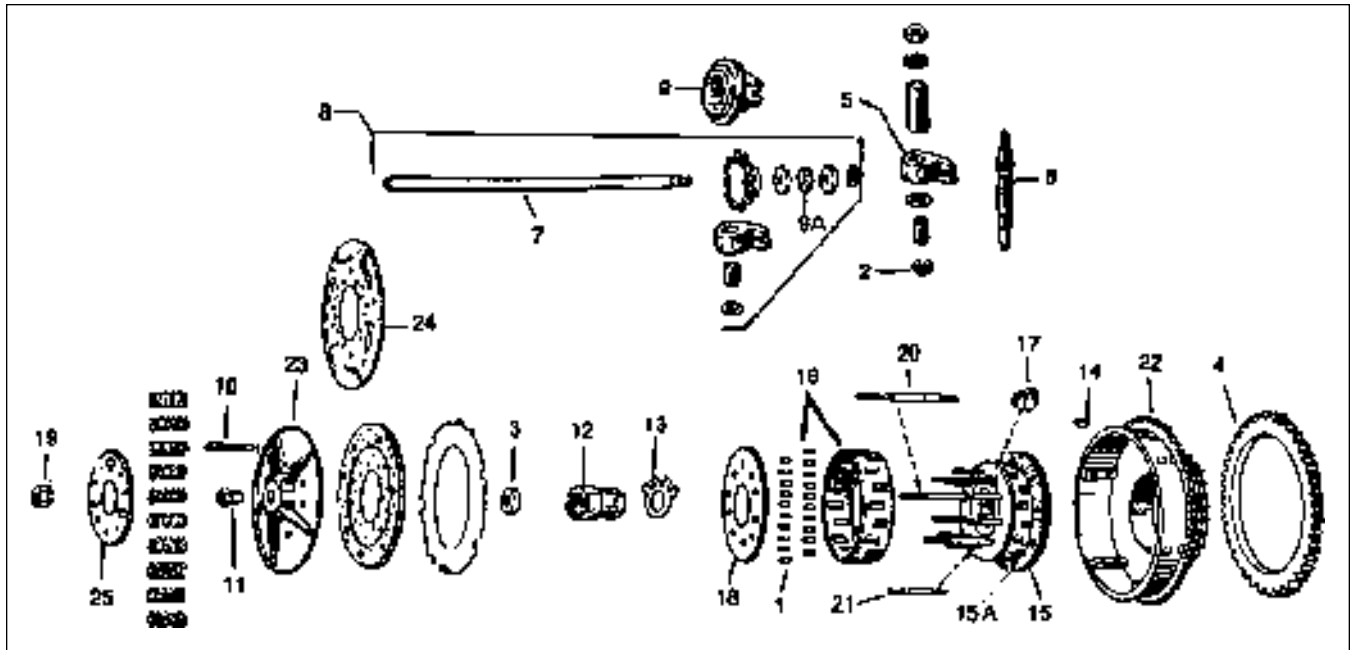


BT Aluminum Clutch Dome

This show polished clutch dome vastly improves the appearance of your open-primary clutch hub; while protecting your leg from the spinning clutch. Includes lock washers and show chrome lug nuts. Fits dry clutch 1936-84.

76002 Fits 5 Stud hub

BT Clutch Parts-4 Speed



Clutch Parts for Big Twin 1936-E84

#	PCP	OEM	Description	#	PCP	OEM	Description
1	2628	9540	Hub rollers (20) STD 36-84 (set)	14	10314	37523-15	Hub key BT 41-84 (10 pk)
	2629	9541	As above .0002 OS 36-84 (set)	15	1111	37550-41	Bare stock clutch hub assembly (3 long studs) 41-84
	2630	9542	As above .001 OS 36-84 (set)		2702	37550-41B	As above, but with 5 long studs and 5 short studs
2	11002	11000	Release finger snap ring 41-84(10)	15A	269	37549-41	Hub friction disc only 41-84, stock
3	14012	12014	Push rod oil seal 65-84 (5 pk)	16	1108	37566-58 9540A	Hub retainer & roller kit 41-84 (set)
4	2819	33163-65B	Starter Ring Gear FL-FX 65-85	17	3848	37574-44	Bear. plate spring FL-FX 44-84 (10)
5	37129	37030-39	Release shaft finger 39-74	18	1107	37576-41	Hub bearing plate 41-84
	3854	37070-39B	Release shaft finger 75-86	19	12563	37581-47	Hub adjusting nut 41-84 (3 pk)
6	3852	37074-38A	Finger release shaft, early 39-86	20	10857	37583-41	Drive hub long stud FL-FX 41-84
	37135	37074-38A	Late shaft, snap type 39-84	21	10900	37585-41	Drive hub short stud FL-FX 41-84
7	273	37285-38	Push rod 38-64	22	3037	37702-70A	Shell with starter ring gear 70-84 (not for FXSB)
	274	37285-65	Push rod 65-69		36900	37703-41	Shell for Kicker only 41-84
	275	37285-70	Push rod 70-E75	23	3851	37871-41	Releasing disc 41-84
	276	37285-75A	Push rod L75-84	24	3853	37950-41	Cushion disc plate 41-67
8	2631	37305-70	Push rod kit 75-84	25	2703	38010-41	Hub pressure plate. 3 hole 41-84
9	1123	37310-39	Push rod bearing 39-74				
	19624	37310-39	Replica throw out bearing BT 36-70				
9A	15618	37312-75	Release bearing BT 4 speed 75-on				
10	268	37357-41	Push rod adj/screw w/ball 41-84				
11	12555	37361-41	Push rod adjusting nut 41-84 (5 pk)				
12	12557	37496-41	Hub mainshaft nut 41-84				
13	13729	37503-41	Hub lockwasher 41-84 (10 pk)				



Clutch Hub Nut and Seal Kit

Fits BT 1941-E84 and includes nut, seal and lock tabs.
36163



Clutch Hub Disc

Friction disc with rivets for BT 1941-84 4 speed clutch hubs.
269 Disc only
76436 BDL teflon disc w/rivets

BT 4-Speed Clutch Hub



Complete Clutch Hubs BT 1941-E84

Supplied with rollers, liner, top plate, 3 and 5 studs.

- 1490** 3-Stud
- 1491** 5-Stud

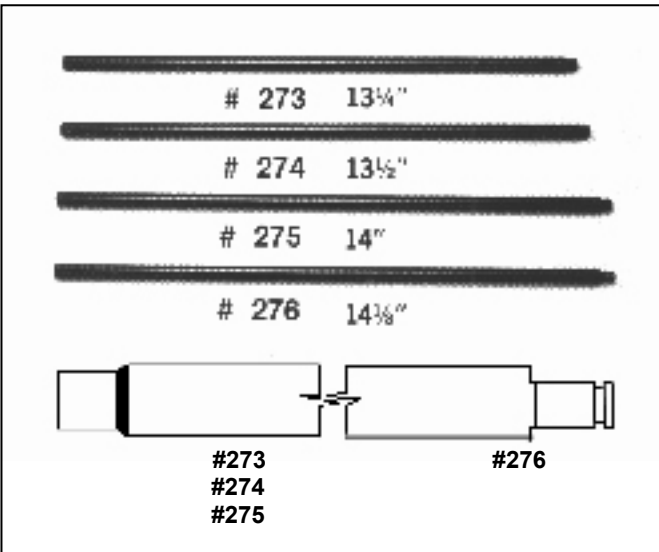


Clutch Hub Assemblies with Long Roller Bearings

Complete replacement clutch hub assemblies that feature "long style" roller bearings. These bearings eliminate the wobble commonly found in most Big Twin clutches. Originally designed for belt drives, these long roller clutch hubs deliver smooth "non-jerking" clutch action in all applications, including big inch Stroker motors. Available in 3 or 5 finger styles, each hub comes complete with friction disc and rivets, pressure plate and nuts, 52 long roller bearings, special bearing grease and seal, bearing retainer plate and springs. These clutch hub assemblies fit all Big Twin models from 1941-early 1984.

- 6766** 3-finger assembly
- 6767** 5-finger assembly

Note: It may be necessary to hone your clutch shell to permit the installation of these kits.



Clutch Pushrods for 4-Speeds

PC #	OEM #	Fits
273	37285-38	1938-64 (13 1/4")
274	37285-65	1965-69 (13 1/2")
275	37285-70	1970-early 1975 (14")
276	37285-75A	late 1975-early 1984 (14 1/8")
11034	11096	Bearing retaining clip. Fits Big Twin models from late 1975-90 (10 pack)



Replacement Outer Pressure Plate

Replaces OEM 38010-41. Used on all 1941-E84 Big Twins. Two styles available. Three hole type for all stock three long stud clutch hubs and five hole plate for all after market five long clutch hub studs.

- 2703** 3-Hole Type
- 1558** 5-Hole Type



Replacement Clutch Hub Studs Only

Precision ground clutch hub stud's for all 1936-84 Big Twins. One hub utilizes three long and seven short studs.

PCP	OEM	Fits
5040	37583-41	3 Long Studs
5046	37585-41	7 Short Studs
10905		Complete kit (10 studs +3 nuts)

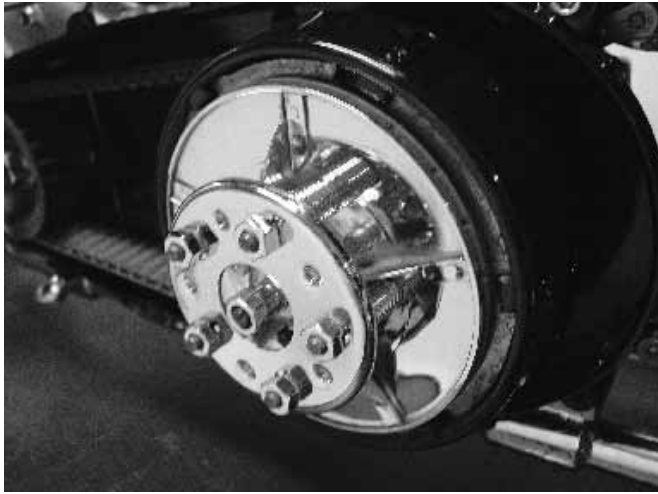


Pushrod Adjusting Screw for Harley

Adjusting screw fits Big Twins 1941-84 (except models with diaphragm clutch).

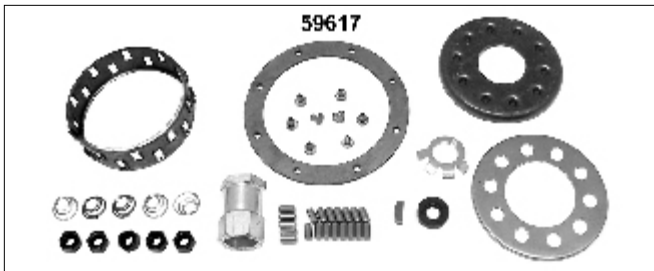
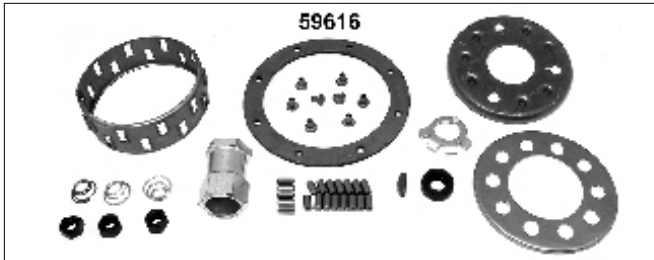
- 268** With roller bearing (37357-41) (each)
- 1426** Without roller bearing (37357-41) (each)

BT 4-Speed Clutch Hub



Chrome Pressure Plate Kit 1936-84

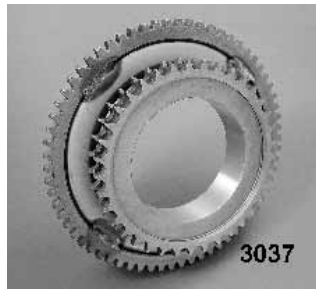
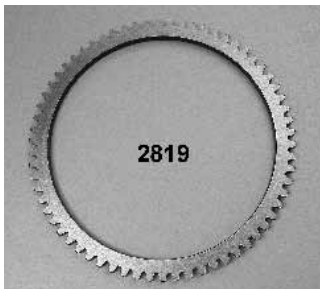
Fits 3 & 5 stud hubs and includes inner and outer plate and 10 springs.
59554



Clutch Hub Hardware Kit BT 1941-84

Includes 20 rollers with cage, liner with rivets, retainer springs, outer pressure plate with either 3 or 5 adjusting nuts.

PCP Hub
59616 3 Stud
59617 5 Stud



BT Clutch Drum 1970-84

Stock replacement.

PCP Hub
3037 Drum with ring gear (37702-70A)
2819 Ring gear only (33163-65B)



BT Diaphragm Clutch Spring Pressure Plate

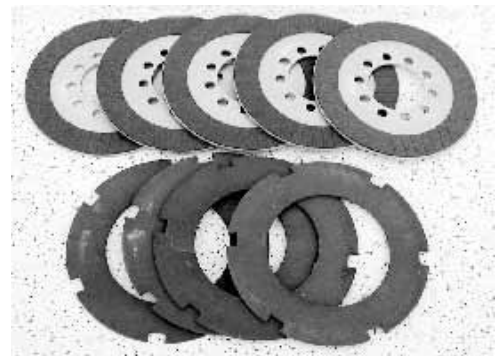
Replaces pressure plate, spring and spring plate on BT 1941-84 models. Includes 5 stud clutch hub with rollers and nuts.
37235



Big Twin 4 Speed Clutch Pack Kit 1941-E84

Clutch kit includes: kick or electric clutch drum, 5 stud complete clutch drum, 4 steel and 5 fibre plates, outer clutch, clutch springs, releasing disc, and clutch hub nut with lock and tab key way and seal.

90122 Kick only 1941-84
90148 Kick and electric 1965-69
90124 Kick and electric 1970-84



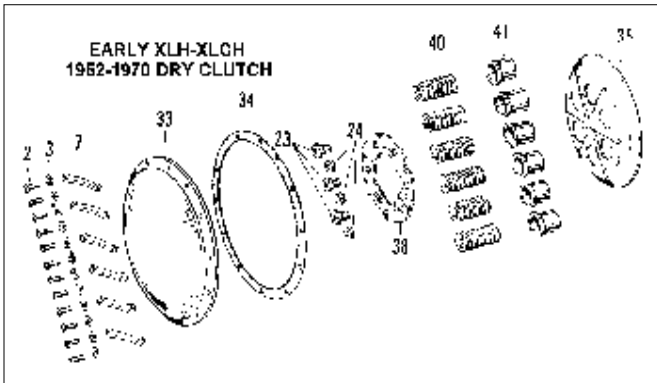
BDL Big Twin 1941-84

Includes 5 Kevlar frictions and 4 steel plates.
76460

XL Clutch 1954-70



#	PCP	OEM	Description	Year	U/M	#	PCP	OEM	Description	Year	U/M
1	2374	33379-57	Starter ratchet	57-70	Each	6	13730	37533-52A	Lockwasher	54-70	10Pk
2	38003	37201-54	Release worm & lever	L54-70	Each	7	38004	37556-57B	Clutch hub assembly	L57-69	Each
3	14050	37339-53	Oil seal release rod	54-70	5 Pk	8	15619	37722-52	Needle bearing	54-70	Each
4	12561	37526-56A	Nut, clutch hub	56-66	Each	9	14054	37741-67	Oil seal, clutch hub	67-70	Each
5	12562	37527-67	Nut, clutch hub	67-70	Each	10	10911	37584-67	Clutch studs	67-70	Set



Early Sportster Clutch Parts

Parts listed below fit 1952-70 XLH-XLCH dry clutch models.

#	PCP	OEM	Description
7	13743	34897-53	Retainer (6 pk)
2&3&7	1494		Retainer kit
33	1495	37760-52	Cover
38	1496	38013-52	Pressure plate
41	1497	38101-52	Spring cups
40	38913	38076-52	Springs (6)
23-24	12619	37581&82-52	Nut kit
35	1499	37876-52	Release disc

Sportster Drive Plate (1952-1970)

Fits Sportster to 1970. Made of steel. Replaces HD No. 37992-52 and are .047 thick.

38911 Sold each

Heavy Duty Clutch Springs for XL (Barnett)

Fits XL and K models 1954-70.

38913 38076-52 (set of 6)

Release Worm Kit

Includes worm for XL models 1952-70 and all related hardware including factory nos. 37201-54, 37210-47, 37222-52, 38130-54 and 38135-50. Includes all items shown.

1398



Sportster Friction Plate Kit 1952-70

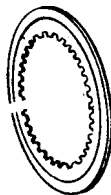
Bonded to a steel core friction disc. This kit to be run dry.

38960 7 Plate set

Backing Plate for 1954-1970 Models

Made of Heavy gauge steel (1 used per bike).

38912 38016-52, 38016-57 (each)

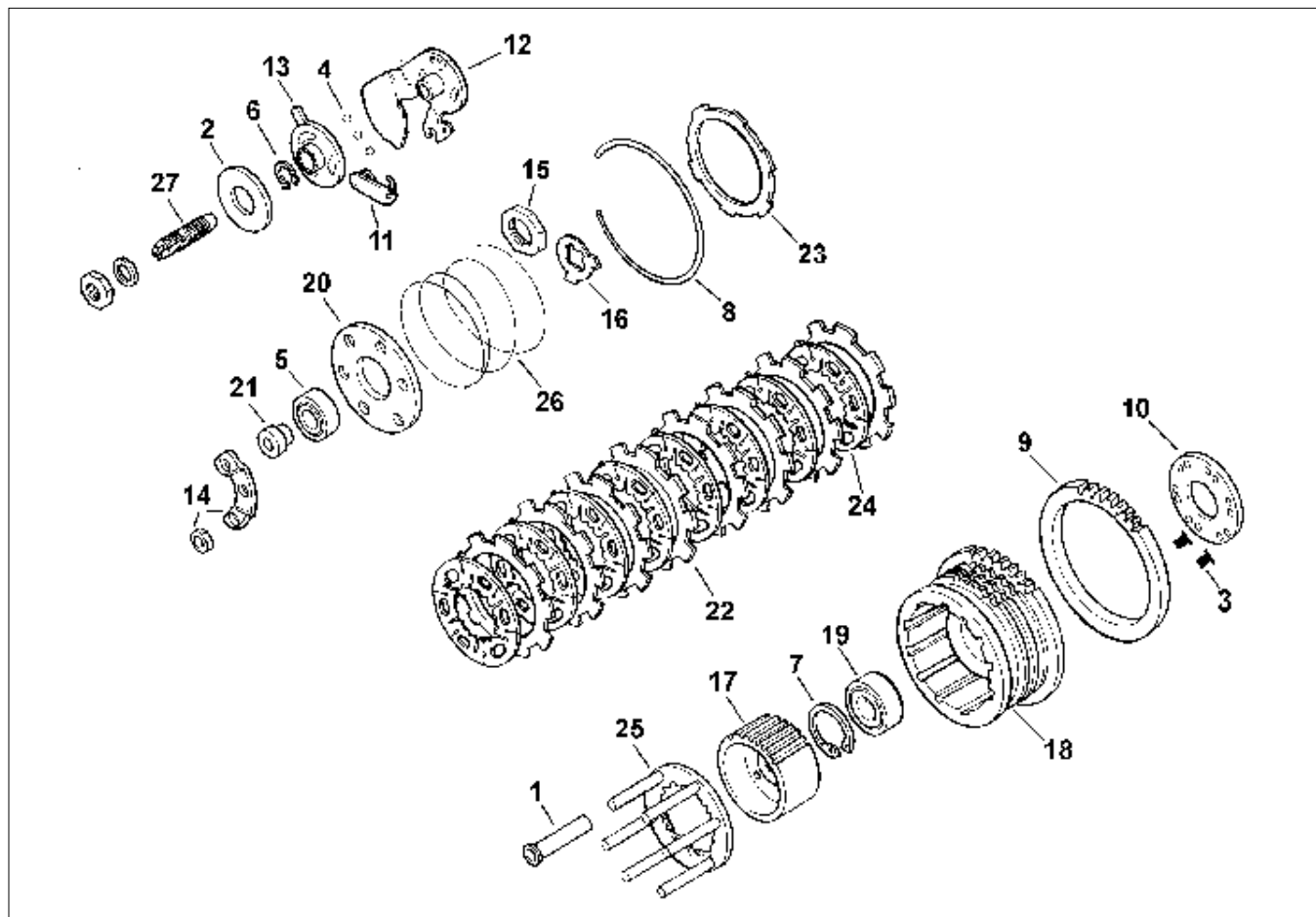


Clutch Release Rod Kit

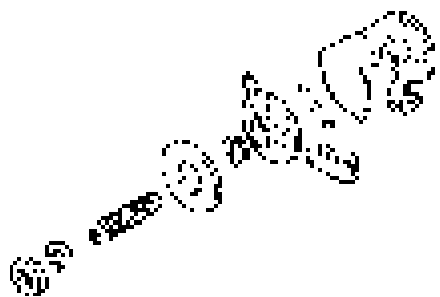
1443 Used on all 1956-66 XLH's and 1967-69 XLCH's.

1444 Used on all 1967-70 XLH and 1970 XLCH.

XL Late Clutch 1971-E84



#	PCP	OEM	Description	Year	U/M	#	PCP	OEM	Description	Year	U/M
1	3891	5995	Spacer/STD (1.530) (6)	71-84	Set	14	3909	37499-71	Retainer and nuts	71-73	Set
	3893	5996	Spacer (-.040) (6)		Set	15	12562	37527-67	Nut, clutch hub	71-84	Each
2	12004	6860	Washer 1x2x1/8	71-on	Each	16	13730	37533-52A	Lockwasher	71-84	10Pk
3	10001	8216	Rivet/5/32x7/16/9/32	71-on	25Pk	17	1509	37561-71	Clutch hub	71-84	Each
4	15700	8860	Ball 5/16 dia. (3)	71-84	50Pk	18	N/A	37717-79	Clutch sprock/assy.	71-on	Each
5	15720	9073	Ball bearing	71-84	Each	19	15730	37722-71	Ball bearing	71-on	Each
6	11005	11005	Retaining ring	71-84	10Pk	20	38002	37878-74	Releasing stud plate	71-84	Each
7	11026	11052	Retaining ring	71-84	5 Pk	21	1493	37879-71	Collar	71-84	Each
8	11027	11053	Retaining ring	71-on	Each	22	38971	37985-71	Drive plates (8) (Barnett)	71-84	Set
9	1510	33162-67	Starter ring gear	67-84	Each	23	38923	37987-71	Drive plate/outer "	71-84	Each
10	2375	33379-71A	Starter ratchet	71-84	Each	24	38909	37992-71	Drive plate	71-84	Each
11	3045	34920-71	Coupling/clutch cbl.	71-on	Each		38910		Drive plates (8) (Barnett)		Set
12	38000	37202-71A	Ramp assembly inner	71-on	Each	25	1399	38005-74	Backing plate	L74-84	Each
13	38001	37203-71A	Ramp assembly outer	71-on	Each	26	13086	38079-72	Spring	72-84	Each
							13085	38080-71	As above 2 piece set	72-84	Set
						27	3907	38130-71	Adjusting screw	71-84	Each



XL Adjusting Screw Kit

This kit fits all XLH-XLCH models 1971-84. Includes all parts pictured except ramp assembly and cable end coupling.

PCP Description

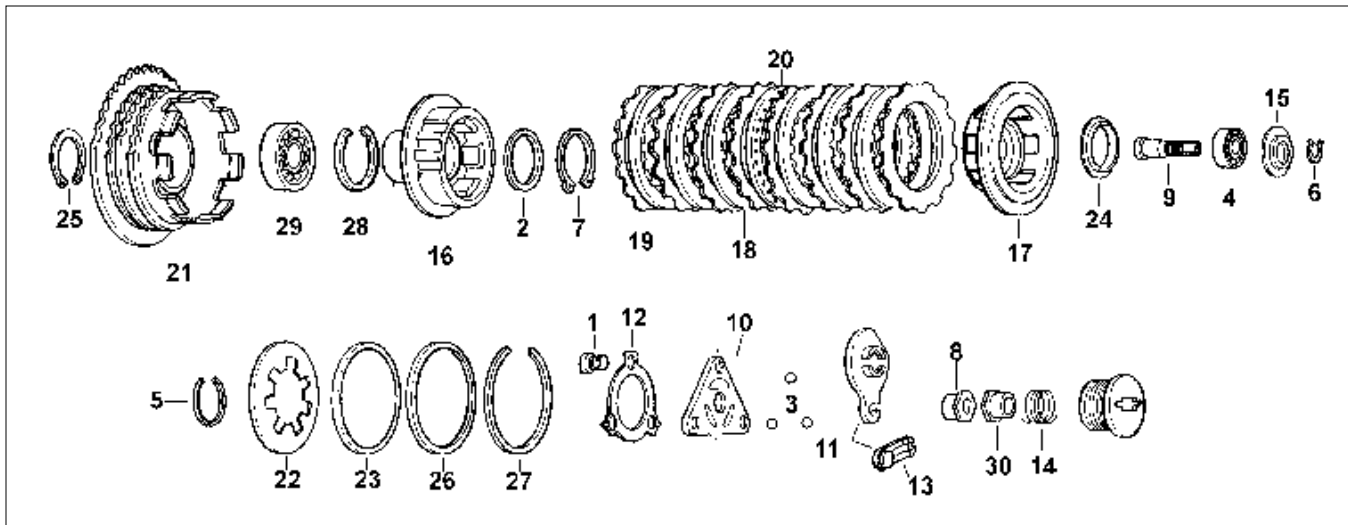
- 16530 Screw Kit
- 16531 Ramp & coupling set (37203-71A, 37202-71A, 34920-71)



Revolution Clutch/Drum Sprocket

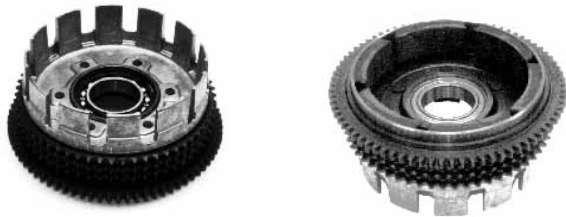
- 38800 XL 1971-80 (37716-71A)
- 38801 XL 1981-E84 (37716-81)

XL Clutch 1985-90



XL Clutch Hardware 1985-90

#	PCP	OEM	Description	#	PCP	OEM	Description
1	N/A		Bolt (each)	16	65412	36785-84	Clutch hub
2	11519	5707	Spacer (each)	17	65413	36786-84	Pressure plate
3	15574	8873	Check valve ball (10 pk)	18	38908	36787-84	Steel drive plate (each)
4	15704	8885	Bearing	19	38972	36788-84	Friction plate (set of 7)
5			Guide retaining ring (ea)	20	36142	36789-84	Centre spring plate
6	11023	11046	Adjusting screw snap ring (10 pk)	21	65414	36791-84	Clutch hub shell with magnets
7	11041	11164	Clutch hub retaining ring (10 pk)	22	38920	36792-84	Pressure plate spring
8	12528	11730A	Adjusting screw nut (each)	23	36145	36793-84	Centre clutch seat
9	24532	11735B	Adjusting screw 1985-93	24	36143	36794-84	Inner spring seat
10	36139	25408-84	Inner ramp 1985-93	25	11073	36795-84	Clutch hub retaining ring (5 pk)
11	36140	25409-84A	Ramp & coupler kit 1985-93	26	36144	36796-84	Outer spring seat
12	13710	25448-84	Ramp lock plate 1984-93 (10 pk)	27	11074	36797-84	Press. plate retaining ring (each)
13	37104	34920-86A	Cable coupling	28	11075	36798-84	Clutch hub retaining ring (5 pk)
14	13184	36715-84	Adjusting spring 1984-93 (10 pk)	29	15728	36799-84	Clutch bearing
15	36141	36730-84	Bearing guide	30	13742	36802-84B	Lock plate filler plug (5 pk)

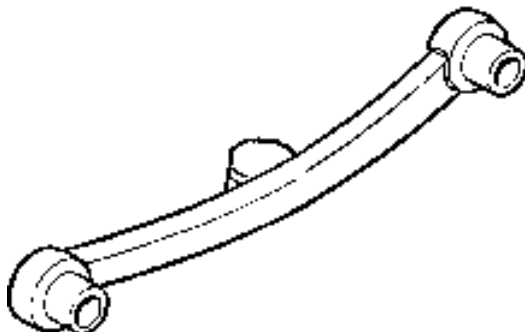


Clutch Hub Shell

Clutch hub shell with magnets fits XL 1985-90. (36791-84)

65414 Topline

37241 Preston



XL Shift Cam Follower 1985-90

Made from durable steel to replace OEM 34063-84.

36123

Chain Drive Kit



Transmission Cover FLT, FLHT 1981-83

Adds a distinguished look to your bike. Covers transmission and oil pump. Mounting hardware included. Available in two styles; plain or louvered.

- 3157** Plain 1981-83
- 3158** Louvered 1981-83



Primo Starter Ring Gears

Designed as a replacement for OEM gears on BT models.

- | PCP | Application |
|--------------|--|
| 76024 | Early Primo belt drive baskets (3 hole) (PP-118) |
| 76025 | Pre-Evo electric start Primo pulley (6 allen bolts) (PP-118-L) |
| 76026 | Sturgis (PP-118-S) |



Primary Chain Drive Systems

Kit includes 82 link or 76 link Diamond primary chain, chain shoe adjuster assembly, clutch drum basket with starter ring gear and steel & fiber clutch plates with pressure plate assembly. Front compensator sprocket assembly includes all parts necessary for installation, including sprocket nut. All pre 1985 FLH, FX 4 speeds require 82 link primary chains. 1980-on FLT, FXR 5 speeds require 80 link primary chains.

82 Links	76 Links	Year
53084	53092	1970-84



Starter Ring Gears

For replacement on stock clutch hubs only.

PCP	Description
2819	BT 1965-E84 (weld-on)
1510	XL 1967-80 (33162-67) (weld-on)
65417	XL 1981-E84 USA (78T)
65418	XL L1984-90 USA (78T)

Barnett Clutch Cables



Barnett Clutch Cables are made from the finest materials available, with casings constructed from hard-drawn spring wire steel. All Barnett clutch cables are made with nylon-lined black PVC coating with a 1/8" diameter inner cable. Some cables are available in heavy-duty strand, larger diameter nylon-lined casings. Some cables are offered in +8" extended size. All stainless steel cables are clear coated.

For Top Quality Clutch Cables go with "BARNETT"
MADE IN U.S.A

For Big Twin FX Models

Black Vinyl		Stainless Steel		FITS
STD	Oversize	STD	+8"	
7453	47118 +6"	47870	47871	FXB Sturgis 1980-82 (38618-68C)
7453	47118 +6"	47870	47871	FXDG late 1983 (38618-68C)
7453	47118 +6"	47870	47871	FX/E 1973-1984 (38618-68C)
7453	47118 +6"	47870	47871	FXEF 1979-85 (38618-68C)
7453	47118 +6"	47870	47871	FXS 1977-82 (38618-68C)
7453	47118 +6"	47870	47871	FXSB 1983-85 (38618-68C)

For Big Twin FXR Models

7434	-			FXR 1982 (38599-80A)
7434	-			FXRS 1982 (38599-80A)
7435	-			FXRS 1983-86 (38599-83A)
7435	-			FXRT 83-86 (38599-83A)

For Big Twin FL Models

Black Vinyl		Stainless Steel		FITS
STD	Oversize	STD	+8"	
7430		-	-	Mousetrap BT 1952-67 (38618-52)
7453	7433 +8"	47870	47871	Heavy duty 4-spd BT '68-86 (38618-68C)
7453	47118 +6"	47870	47871	FL 1968-84 4-Speed (38618-68C)
7435	-	-	-	FLHT 1983-86 (38599-83A)
7435	-	-	-	FLHTC 1983-1986 (38599-83A)
7434	-	-	-	FLT 1980-1982 (38599-80A)
7435	-	-	-	FLT 1983-86 (38599-83A)
7434	-	-	-	FLTC 1981-82 (38599-80A)
7435	-	-	-	FLTC 1983-86 (38599-83A)

For FXWG

Black Vinyl		Stainless Steel		FITS
STD	Oversize	STD	+8"	
7453	47118 +6"	47870	47871	FXWG 1980-86 (38618-68C)

For Sportster Models

Black Vinyl		Stainless Steel		FITS
STD	Oversize	STD	+8"	
7446	7447 +8"	47874	47875	Clutch Cable (38619-71B) XL's 1971-85 (38619-84)
7443	7444 +8"			XL 1957-59 (38619-57A)
7443	7444 +8"			XLCH 1958-70 (38619-57A)
7446	7447 +8"	47874	47875	XLCH 1971-79, XLX 1977 (38619-71B)
7448				XLCH 1977-78, XLX 83-85 (38626-84)
7443	7444 +8"			XLH 1958-70 (38619-57A)
7446	7447 +8"	47874	47875	XLH 1971-85 (38619-71B)
7448				XLS 1979-80 (w/Cafe Bars) (38626-84)
7446	7447 +8"			XLS 1981-85



Heat Shrink Tubing for Braided Cables

Use clear heat shrink tubing on all braided stainless steel cables to prevent scratching of chromed or painted surfaces. Kit contains 4-16" long heat shrink tubes to cover 2 throttle cables, 1 clutch and 1 speedo cable. Bulk tubing comes in a 10 foot roll.

PCP	Application
28713	Cable sleeve kit
28714	3/8" x 10' roll
28715	1/2" x 10' roll
28716	3/4" x 10' roll



Chrome Cable End Covers

These chrome accessories cover the fitting on speedo, tach and clutch cables. Sold each.

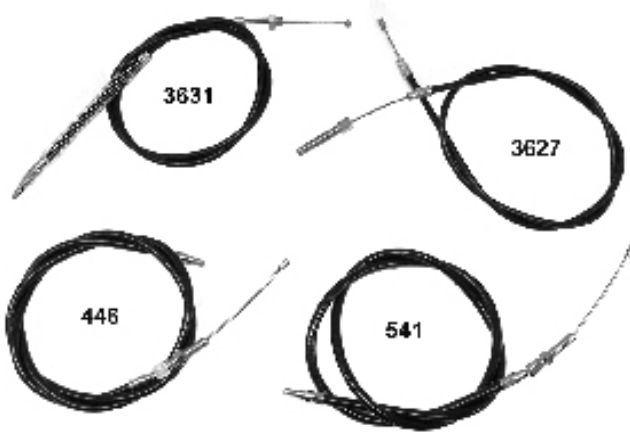
Clutch Cable Cover

44020 Upper, all 1982-on

Speedo/Tach Cable Cover

44024 Upper, 12mm cable nuts
44026 Lower, all front wheel drive speedo cable only

Clutch Cables



FLH MODELS

PCP	OEM	Fits
539	38618-52	FL Mousetrap 1952-67 STD length barrel end.
540	38618-52	FL Mousetrap 1952-67 +8" longer barrel end
541	38618-68	FL 1968-86 STD length barrel end
446	38618-68	1968-86 +6" Longer barrel end
3627	38618-68A	1979-on STD length ball end

FLT MODELS

3270	38599-80A	FLT 1980-82, FLTC 1982-83, FXR 1982, STD Length
3631	38599-83	FLT, Classic 1983-86 STD Length

FX MODELS

541	38618-68	FX 1972-78 STD Length
446	38618-68	FX 1972-78 +6" Longer
3627	38618-68A	FX 1979-on
3270	38599-80A	FXR, FXRS 1982 STD Length
3631	38599-83A	FXR, FXRS, FXRT 1983-86 STD Length

45 MODELS

3639	36975-41	45 Solo, Servi-Car 1941-52 STD Length
------	----------	---------------------------------------

SPORTSTER MODELS

7443	38619-57	Sportsters 1954-70 STD Length
538		XL, '71-85, XLS 81-85, XLT 1977 STD Length
3635	38626-77	XLS 1979-80, XLX 1983-85, XLCR 1977-78 STD Length



+12" Clutch Cables

With black vinyl casings for use with those high handlebars.
47300 FL & FX 1968-84 4 speeds (Casing is 64")



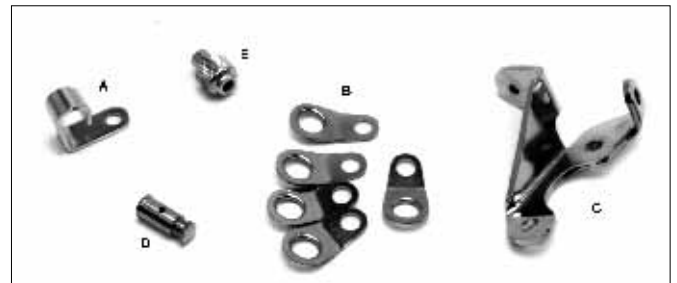
Stainless Steel Cables

PCP	Application	Model/Year
47613	Clutch	BT 1968-84 with barrel end
47614	Clutch	BT 1968-84
47615	Clutch +8	BT 1968-84 with barrel end
3647	Clutch XL	900-1000 1971-84
47607	Brake	All 1949-72
47610	Clutch	FXR 1983-86



Chrome Clutch Cables

Fits XL models 1971-84
3061 38619-71



Cable Brackets and Adapters

PCP	Fits
16200	(A) Chrome clutch cable support bracket. Fits all 5 speed models 1980-86. Keeps cable away from cylinders. (each)
3271	(B) Chrome FLH clutch cable router 1968-84. (5 pk)
1301	(C) Clutch cable bracket. Attaches to the stock oil tank and holds the clutch cable in place. Fits 1965-78 Big Twins (62576-65A) (each)
1297	(D) Chrome cable repair clamp for levers. (each)
16232	(E) Cable thumb adjuster 1954-70 (38564-53)(each)

Clutch Cable Bracket

27128	BT 1979-84
27338	XL 1952-E70 (38675-52)



BT 4 Speeds



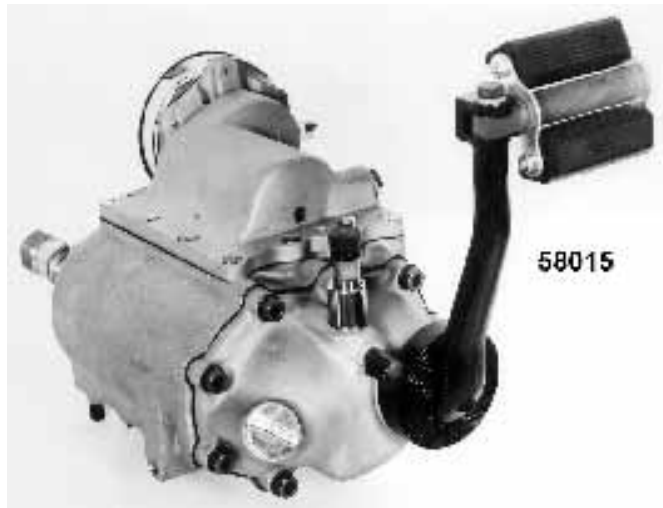
BT 4 Speed Transmissions

Fully assembled transmission includes internal parts, chrome kicker cover and components, clutch rod, throwout bearing, ratchet top, dust cover, arm, mount studs, clutch hub nut, seal and key.

1965-84 Models

Feature a case with mount lugs to accept aluminum inner primary covers, a 1:1 ratio speedo and Torrington needle bearings. Will accept belt or chain final rear drive that accepts electric start. **Note:** The shift pattern will be reversed when installed in mid shift models as it has the FL type ratchet top to be used with forward controls.

PCP	Ratio	Application
58017	3.00	FLH 1965-69
58018	3.00	FLH 1970-84
58019	2.44	FX 1970-84
58020	3.00	FL 1970-84 with 1979-85 type rotary top
58021	2.44	FX 1970-84 with 1979-85 type rotary top



BT 4 Speed Transmissions

Fully assembled transmission includes internal parts, chrome kicker cover and components, clutch rod, throwout bearing, ratchet top, dust cover, arm, mount studs, clutch hub nut, seal and key.

1936-64 Models

Feature original style case with early style main drive gear and 44 rollers and a 2:1 ratio speedo drive gear for kick start only.

PCP	Ratio	Application
58014	3.00	With chrome kick cover & offset kicker arm
58015	3.00	With aluminum kick cover and 1-piece black kick arm for kick start only



4 Speed Trans Top 1979-84

All parts completely assembled with a natural finish except the chrome plated arm with grease fittings. USA made.

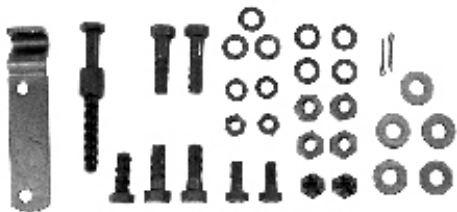
PCP	Application
36904	FLH
36906	FXE



BT Trans Plate Kit 1936-64

Kit includes adjuster strap and installation hardware.

27230	Chrome
27231	Parkerized

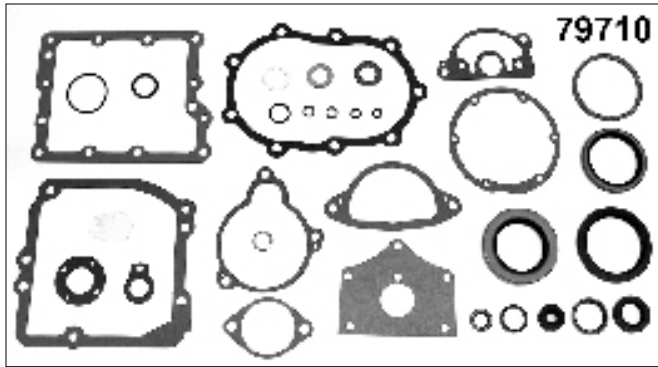


BT Adjusting Strap Kit

Kit includes strap, adjusting screw and mount bolts.

21500	Parkerized
21501	Chrome

BT 4 Speed Gear Box



Transmission Gasket Kits for Big Twin & 45

Transmission kits contain all the gaskets and seals needed to rebuild Big Twin and 45 transmissions.

James	PCP	Fits
79700	-	1941-73 45" (33030-41)
79710	6571	1936-64 Big Twin (33031-36)
79710	6572	1965-69 Big Twin (33031-65)
79710		1970-E79 Big Twin (33031-70)
79710	6574	1980-86 Big Twin 4-spd (33031-80)
-	6575	1980-84 Big Twin 5-spd (33031-82)
79706	-	1980-99 Big Twin 5-spd (33031-85)



Big Twin Trans Rebuild Kits-Jims

These kits have proven Jims Machining parts to start with and then complimented with James Gaskets.

31270	4 speed 1936-E76 (33031-36)
31271	4 speed L1976-E77 (33031-76E)
31272	4 speed E1977-E79 (33031-76L)
31273	4 speed 1980-86 (33031-80)

BT Trans Hardware Kit

Includes all locks, springs, keys retaining rings & clips for all 4 speeds. All the hard to get small parts.

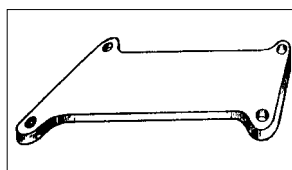
4482	1936-79 Ratchet top
4483	1979-84 Rotary top



Spacer Plate

Use this 5/16" thick plate between trans mount plate with a rigid mechanical frame to increase height of transmission so cast inner primary may be used.

27142



S.T.D. Transmission Case

These precision cases are machined from "356-T6" aluminum alloy. Stress areas are reinforced to withstand both stock and high performance applications.



Big Twin 4 Speed Gear Boxes

PCP	OEM	Years	Note	Type Top
36790	34701-65A	1965-E77	1	Ratchet
36791	34702-78	L1977-E79	2	Ratchet
36792	34702-80	L1979-81	3	Rotary
36793	34702-80	L1979-84		V-Twin

- Notes:**
1. Ears must be removed on 1936-64 kick start models.
 2. For 1981-84 4 speed, use early style 1977-81 4th gear bearing 15603. (OEM 8905)
 3. Can also be used on 1981-84 models when bearings and housings style are used from note 2.

V-Twin BT Trans Cases 1936-64

Case includes installed main drive case race and countershaft bushings installed. Replaces OEM 34700-36. 36794



4 Speed Mainshaft Spacer and Seal Kit

Includes coated seal, correct spacer, nut and locktab.

PCP	Year
36032	1937-76
36033	1977-78
36034	1979
36035	1981-82
36036	1983-85

Big Twin Trans Mount



Chrome Steel Transmission Mount Plates

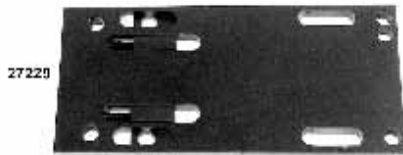
PCP	OEM	Application
27126	47698-36	Chrome 74 & 80 BT Rigid/Swing arm
	47698-65	4 speed 1936-84
27125		As above, black
27248	47698-36	Chrome BT 1936-57
27249		As above, parkerized
27261	47698-58A	Chrome 4 Speed 1958-84
27262		As above, black
27263	Custom	Rigid mount 5 speed trans in 4 speed Paughco frame



Chrome Dual Transmission Adjusting Kit

This even pull adjuster was designed for accurate alignment and adjustment of the transmission mainshaft and engine sprocket shaft, when open belt drives or tin primaries are used. Fits all 4-speed Big Twin models 1958-86.

4338 Sold each (not for Softails)



Adjustable Transmission Plate

Features built-in screws for positive and even adjustment on Big Twin 4 speeds.

27228 Chrome 1936-84

27229 Black 1965-84



BT Acorn Trans Mount Kit

Includes bolts and washers necessary for installation.

PCP	Year
5222	1936-64 Chrome
5223	1936-64 Cadmium
1775	1936-64 Acorn
20504	Biter washer for above (5 pk)
9418	1965-76 Chrome
9419	1965-76 Zinc
9420	1977-86 Chrome
9421	1977-86 Zinc



Transmission Mounting Kit

Complete transmission mounting kit contains heat treated bolts, castle nuts and cotter pins, and heavy duty washers. Reproduction of stock Harley hardware. BT 1936-64

5222 Chrome

5223 Cad



Transmission Adjuster Strap

Big Twin models 1936-64.

231 Chrome (47720-36)

19634 Black (47720-36)

230 Chrome adj. screw (34735-36)



Chrome Transmission Vent BT 1936-E79

Correct venting of the transmission equalizes outside air pressure with the pressure in the case which reduces leakage. The vent screw has a 90 degree nipple fitting and includes a 12" routing hose that allows the vent to be positioned away from water and dirt.

71006



Trans Mounting Plate to Frame Kit

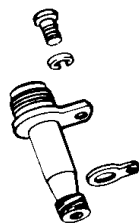
1800 Big Twin 4 speeds 1936-86

4-Speed Transmission Box

FL Speedo Drive Unit

Exact replacement for the OEM part.

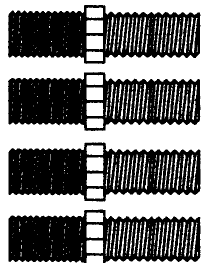
PCP	OEM	# of Teeth	Years
4631	67130-36	11	1936-61
4632	67130-62	13	1962-67
4633	67130-69	23	1968-80



Aligning Stud Set

This 4 piece set helps in aligning 74 & 80 trans cases without center aligning rib. The flats of studs slide tightly in plate for positive fit so case remains straight.

931



79811

James Trans Main Gear Nut and Oil Seals

PCP	OEM	Description
79811	35211-36-DL	Transmission countershaft "Supernut" 1936-85 belt or chain drive
79812	35211-85-DL	Replacement oil seals for supernut (5 pack)



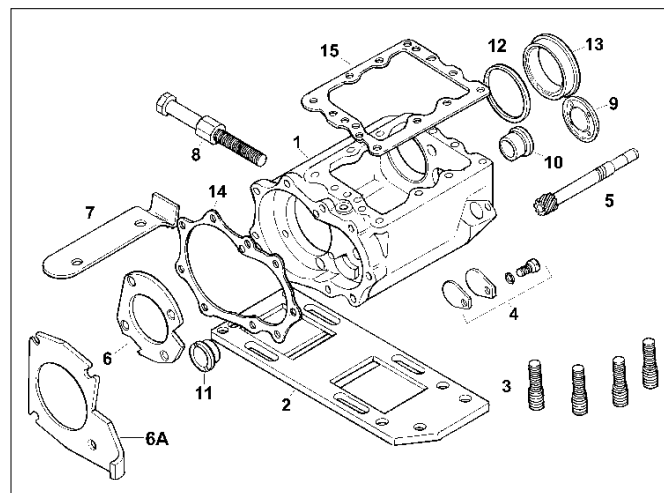
79806



79810

James Transmission Sprocket Seal Kits

PCP	OEM	Description
79808	35230-39-K	Trans main seal kit 1936-79 4 speed FL, FLH, FLH-80, FLH Classic
79809	37741-67-K	Trans main seal kit 1980-81 4 speed FL, FLH, FLH-80, FLH Classic
79810	37741-82-K	Trans main seal kit 1982-84 4 speed FL, FLH, FLH-80, FLH Classic



#	PCP	OEM	Description
1	36794	34700-36	Trans (bare) box. Fits 1936-64
	36790	34701-65A	Transmission (bare) box 1965-78 Above housings have speedo hole
2	27126	47698-58A	Chrome mount plate, 1936-84
3	10853	34724-36	Housing mount studs 1936-83 (4pk)
	10852	34723-47	As above, oversize (4 pk)
4	1189	35606-73	Drive hole cover kit 1936-on
5	3888	67135-36	Speedo shaft gear unit BT 1937-61, ServiCar 1938-61
6	3456	35111-36	Housing bearing retaining plate 1936-79
6A	4576	35111-80	Late bearing retainer 1980-86
7	231	47720-36	Chrome screw strap. Fits 1936-64
8	230	34735-36	Chrome adjusting screw 1936-64
9	3883	36027-36	Zinc c/s end cover 1941-on
10	2625	36048-36	C/S bushing clutch side 1937-E76 STD
	2626		As above +.005 O.S.
	2627	36048-76A	C/S bushing clutch side L1976-82 STD
	20102	36048-76A	As above +.005 O.S.
11	2622	36046-36	C/S bushing starter side 1937-E76 STD
	2623		As above +.005 O.S.
	2624	36045-76	C/S bushing starter side L1976-79 STD
	20100	36045-80	As above +.005
	2627	36048-76A	C/S bushing starter side L76-82 STD
12	11067	35129-36	M/S Race retaining ring '41-77 (5)
13	1117	35125-37	M/S outer race STD 1937-E77
	31086		Jim's, as above
	31081		Jim's, as above +.002
	1118		As above +.005 O.S.
	31087		Jim's, as above
	1124		As above +.010 O.S.
	31088		Jim's, as above
14	79313	33295-36	James gasket 1936-85 (10 pk)
	79511		James, as above with silicone (5 pk)
15	79323	34824-36	James top gasket 1936-E79 (10pk)

BT Trans Kit 1936-79

13800 7 Piece kit



Trans Plugs



Oversize Timing Plug and Tap Kit

Contains 1 chrome plated acorn head plug with an oversize thread and one tap for rethreading the stripped out timing hole. Fits all Harley Davidson timing holes.

- 1758** Kit
- 1759** Oversize timing plug only

Timing Plug- Oil Tank Plug

Chrome plated plug fits Harley Davidson timing holes, Big Twin & Sportster oil tank with 5/8-18 thread to 1980.

- 1690** Acorn
- 2896** Cap
- 5258** 1981-on Big Twins (1/2 x 20)



Oversize Drain Plug and Tap Kit

Contains 1 chrome plated dome head plug with an oversize thread and one tap for rethreading the stripped out drain hole. Fits O.H.V. Big Twin Harley Engines 1965-on.

- 1760** Kit
- 1761** Oversize drain plug only



Transmission Fill-Timing Plug

Dual purpose fits all HD 1930-38. Adds custom look to Panhead, XL's and Shovelheads. Oil fill application on "45" models up to 1940. Dimension 5/8-18 thread

- 5282** Cadmium
- 3591** Chrome
- 5283** Black oxide



Drain Plug 1/2 x 13

Drain plug and brass gasket used on XL transmission, motor case, oil tank and Big Twin 1937-86 transmission.

- 5259** Chrome
- 5260** Cad



Transmission Plugs

- A.** Custom fill plug for all BT 1940-on with 4 speed trans.
1743 Chrome
- B.** Custom cap style plug BT 1940-on with 4 speed trans.
5392 Chrome
- E-G.** Stock reproduction is available in standard or oversize self tapping for BT 1940-on with 4 speed transmission.
1482 Standard chrome (E)
1780 Standard cad (E)
- G.** **1781** Oversize chrome
5241 Oversize cad
- F.** Chrome plated custom fill plug is designed to restore "pulled" threads in the Harley transmission side cover. Fits all Big Twins 1940-on with 4 speed transmission.
5240
- H.** Stock reproduction for 45's 1941-on.
5298 Chrome
5284 Cad
9719 Parkerized
- I.** Knurled transmission filler plug for BT 1958-80
9400 Chrome plated steel
9401 Brushed aluminum



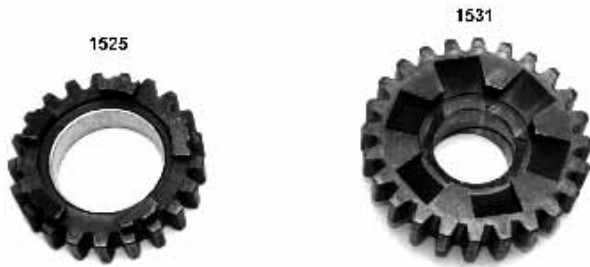
Transmission Side Cover Kit

Stock Harley hardware kit contains nuts and washers for the transmission side cover and clutch arm. Available chrome or cad plating. Fits all Big Twins.

- 2157** Chrome
- 5171** Cad

BT 4 Speed Gears

NOTE: All gears listed on this page are imported.



Countershaft Low Gear (First)

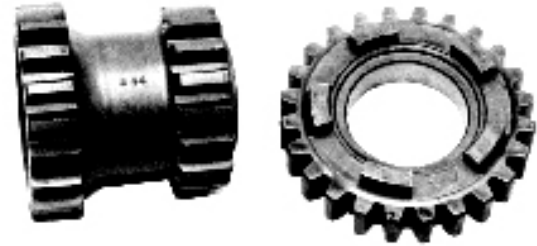
PCP	Application
2308	26T FL 1936-85, FX 1971-73 (35765-36)
1523	24T FX 1974-85 (35717-74)

Countershaft 2nd Gear

1525	21T FL 1936-85, FX 1971-79 4 speed (35751-36)
2312	24T 4 speeds 1980-83 (35751-79)

Mainshaft Third Gear

1531	24T Late stock (35306-59) Required for older transmission when close ratio first gear is installed
36232	24T Early stock (35306-59) 1936-58



First Gear Sets for Big Twins

2.44:1 set for use in Super Glide models and lightweight Big Twins. 2.60:1 set works best with heavy fulldress Big Twins. Both provide a higher first gear and eliminate second gear clunk. Also allow the use of a large engine sprocket for easier starting. Complete with installation instructions. Both fit Big Twins, 37-85. Will fit 1980-85, if OEM 35751-36 2nd gear is used. Fits 4 speed models.

3882	2.44 Close Ratio 1st. 1937-78 17T x 20T
3884	2.60 Close Ratio 1st. 1937-78 16T x 20T
3886	2.60 Close Ratio 1st. 1979-on 4 speed 16T x 25T

CLOSE RATIO 3rd GEAR SET



Combination 2.24 1st & 1.65 2nd Gear Set

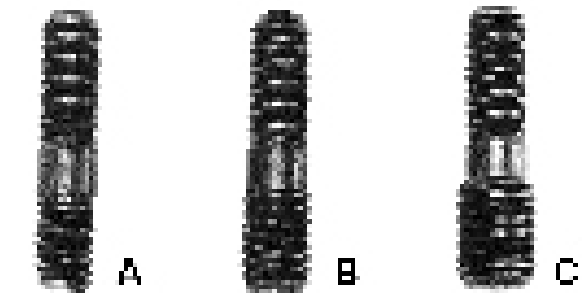
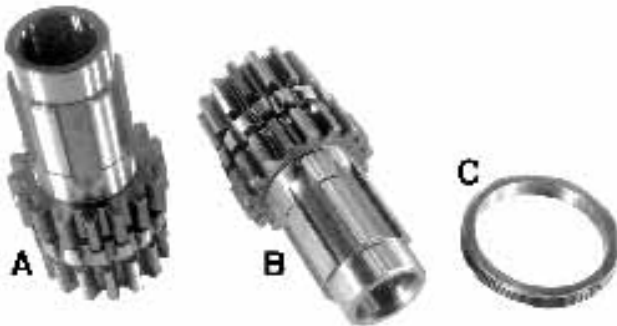
3 Piece set replaces 1st, 2nd and main cluster on 1936-85 4 speed. Works in street or drags of any size motor to provide peak RPM performance with super close ratio shifting.

201020	Andrews
36230	Preston

Third Gear Set for Big Twin with 4 Speed

1.35:1 gear set for all Big Twins. Obtains better pull in 3rd gear and smoother shifts from 2nd to 3rd. Speedometer drive may be retained with either set. A combination of this 3rd gear set and a 1st gear close ratio set for Big Twin will yield a big boost in performance and durability.

1528	1.35:1 3rd gear set. Fits FX L77-86 (caged rollers)
1526	1.35:1 3rd gear set. Fits BT 41-E77 (loose rollers)



Countershaft Cluster Gears

PCP	Application
1529	(A) FLH pre-1976, FX 1971-72 (35713-36)
3441	(B) FLH 1981-84, FX 1976-84 (35716-76)
19356	(C) 11T speedo drive gear 1937-E61 (35635-36)
19357	(C) As above 1962-68 (35635-62)
3444	(C) 7T As above, FLH 1969-80 for use with # 4633 speedo drive (35635-69)

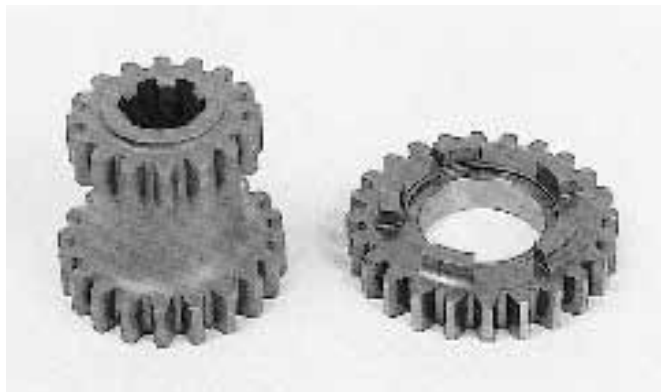
Transmission Case Bottom Stud Kits

Colony reproduction studs available in standard, oversize and extra oversize. Sold in sets of 4 with parkerized finish.

PCP	Size	Application
9653	3/8-16 x 3/8-24	(A) BT 1936-83
9654	7/16-14 x 3/8-24	(B) BT 1936-83
9655	1/2-13 x 3/8-24	(C) BT 1936-83

Andrews Gears

Many versions of the 4 speed transmission have been built since 1936. They include Knuckles, Pans, and Shovels. With Andrews gears, transmissions last longer, shift faster and just plain run better.



2.60 1st Gear Set

This gear set works best with E glides and heavier bikes with motor or trans sprockets having more teeth than stock sprockets. Installation in 1980-84 FX requires 21T (1.82 ratio) 2nd gear for this 1st gear.

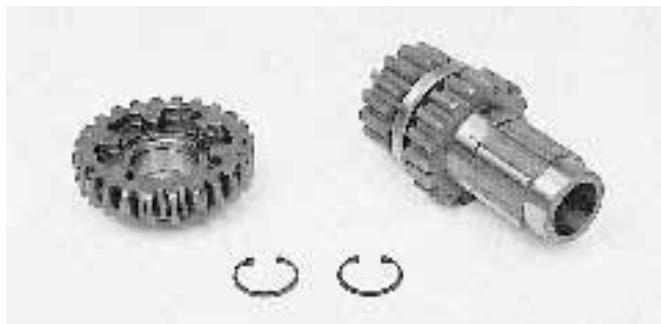
201145



Combination 2.24 1st - 1.65 2nd Gear Set

If you want peak RPM thru the quarter mile, this gear set will provide the super close ratio shifting to handle it. OK for street or drags with any size motor.

201020



Stock 3rd Gear (1.23 Ratio)

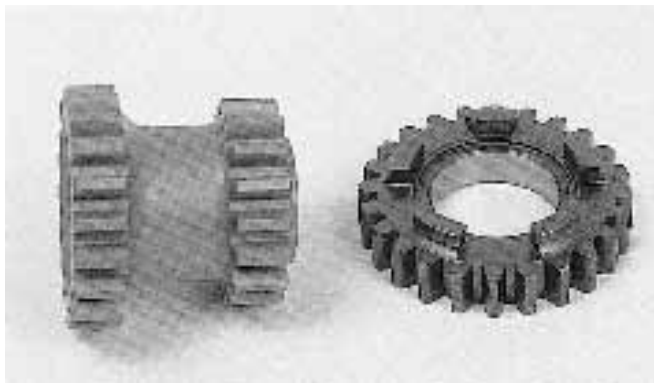
Replacement for stock main 3rd and countershaft 3rd. The design of the drive slots on mainshaft gear includes lead-in ramps for quicker, more positive shifting.

206220 Mainshaft 3rd 24T (35306-59)

206215 Mainshaft 3rd 24T (35306-36)

206330 Cluster 1936-76 (35700-36)

206335 Cluster 1976-86 (35700-76)



2.44 1st Gear Set

Best choice for Superglides, choppers and lighter bikes with stock or smaller motor or trans sprockets. This is a no-clunk, 48MPH, 1st gear. Installation in 1980-84 FX requires 21T (1.82 ratio) 2nd gear for this 1st gear.

201105

3.00 First Gear Set

Stock replacement first cluster and countershaft gears. For heavy bikes from 1936-84. Cluster gear has 15 and 20 teeth and counter has 26 teeth.

201090 1959-84

201094 1936-58



Stock 2nd Gear (1.82 Ratio)

Stock 2nd gear with face milled drive dogs for more positive 1-2 shifts. This is a 21 tooth gear which fits 1941-79. It will also fit later transmissions but requires one of the first gear sets shown above to complete such a conversion.

202160 35751-36



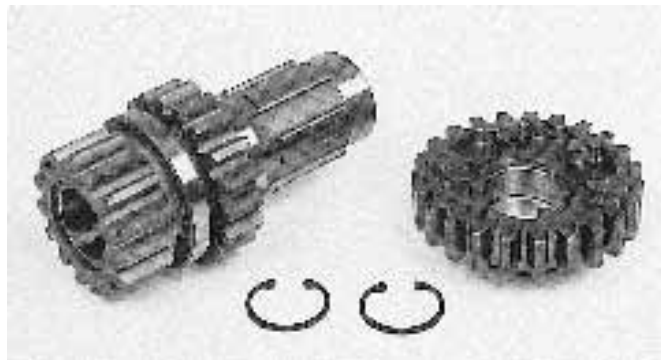
Shift Forks

One piece cold forged forks are more heavily made with wider sections for greater strength and durability. Fully heat treated and black oxide coated, they are a must for all transmission rebuilds.

209750 1-2 Fork (34159-36)

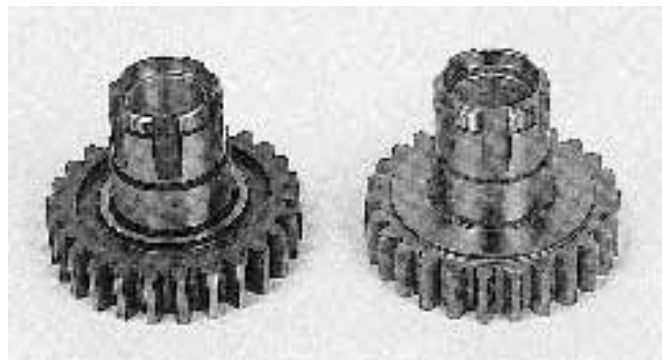
209760 3-4 Fork (34158-36)

Andrews Gears BT 4 Speed



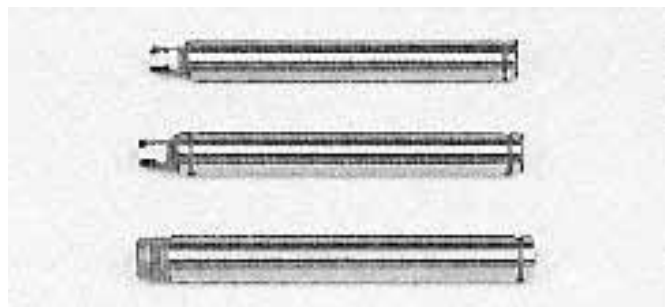
1.35 Close Ratio 3rd Gear Set

- 203365** Early sets for transmissions built before mid 1976, to serial #U-8958 (or lower) with loose needle bearings
- 203375** Late sets for transmissions built after mid 1976, from serial #U-8959 (or higher) with caged needle bearings. Lead in ramps on drive slots allow for quicker more positive shifting. (same as stock 3rd or 4th gears)
- 203300** M/S 3rd Gear only for #203375



Stock Main Drive Gear (4th)

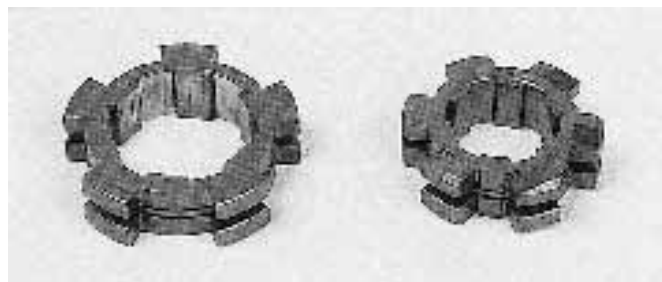
- 204260** Early thru 1976. Replaces 35065-65.
- 204280** Late 1977-85. Replaces 35067-77 and 35067-84. All late 4th gears have o-rings for better oil sealing. AP replacement 4th gears are made with wider drive slots and steeper lead-in ramps for more positive 3-4 shifting and less wear and tear for long life. The o-ring groove is a design update for all chain drive 1977-84 4th gears.



Transmission Countershafts

Replacement countershafts fit transmissions thru 1985. They are not interchangeable, so be certain before you order.

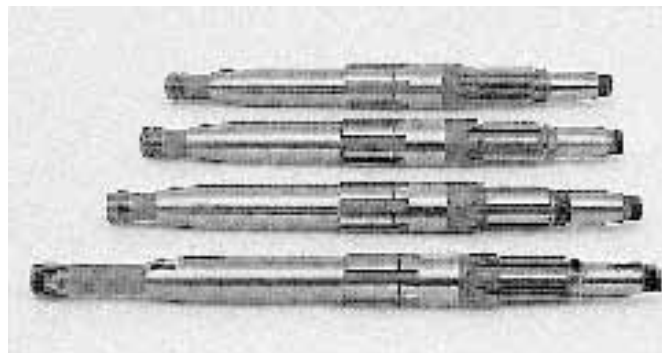
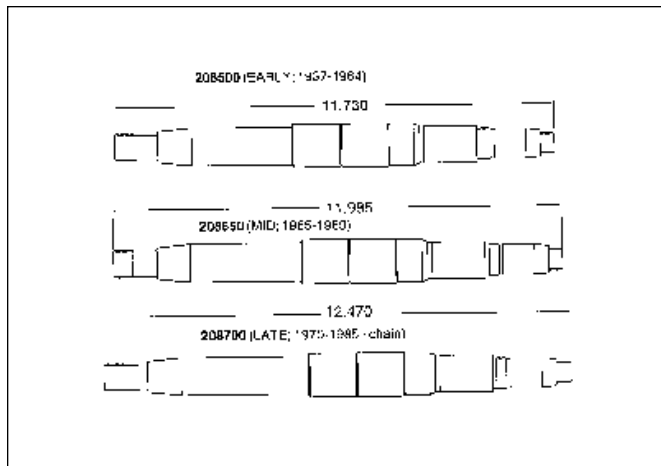
- 207650** 1941-E76 (35614-65)
- 207770** Late 1976-79 (35614-77)
- 207800** 1980-85 (35614-80)



Shift Clutches

Replacement clutches are specially heat treated and shot peened for super durability. 3-4 clutches are face milled and have longer lead-in ramps for more positive shifts.

- 205120** 1-2 Clutch (35665-36)
- 205340** 3-4 Clutch (35440-38)



Transmission Mainshafts

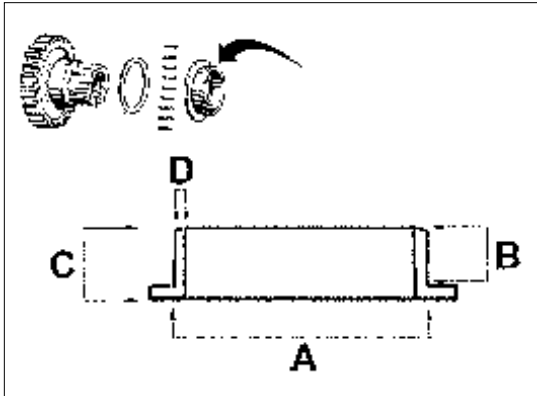
Replacement mainshafts for all versions of BT boxes. Made from aircraft alloy steel with heat treatment and finish grinding to ensure maximum durability.

- 208500** 1937-64 (35040-50)
- 208650** 1965-69 (35039-65)
- 208700** 1970-E85 chain drive (35039-70A)

Transmission

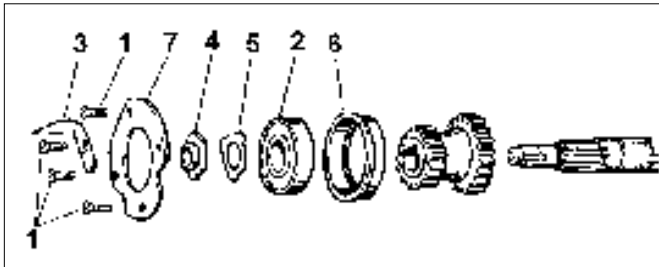
Main Drive Gear Spacers

4 Speeds Machined, heat treated & seal area ground.



For Big Twin 4 Speeds 1941-86

PCP	OEM	Description	A	B	C	D
3453	35171-37	1941-E77. Use with 35175-38 locking key and #10312 (35171-37) loose roller bearing gears	1.753	.465	.580	.120
3454	35070-77	L1977-79	1.750	.465	.552	.120
3455	35070-80	80-81. Used with #14054 oil seal (35171-37) and #15603 bearing (8905)	1.875	.310	.402	.185
11501	35079-82A 35079-84	All chain drive 1982-85	2.062	.320	.402	.272
11500	35070-82A	All belt drive 1982-86	2.062	.370	.455	.272



Main Shaft Hardware

Parts below fit 1936-84, 3 & 4 speed BT models.

PCP	OEM	Description
1	4734	1864-B Screws (10 pack)
2	15715	9020 M/S bearing
3	1207	33429-39 Oil deflector (5 pack)
4	12550	35046-36 Nut (each)
5	13724	35050-40 Lock tab (10 pack)
6	4786	35100-36 Bearing housing 1936-79
7	3456	35111-36 Retainer plate



Main Gear Seal BT 1966-81

This rubber coated seal fits the main drive gear on BT 4 speeds.

14103 5 pack (12022)



James Trans Main Seal Set

79825 Fits 1980-E84 (12044-AK)

Big Twin 4 Speed Super Nut 1936-85

Both nuts have a built seal for the mainshaft surface, Duo-Nut features double action sealing by use of the mainshaft seal and an O-Ring recessed on the back side of the nut.

12604	Super nut
79811	James, as above
4337	Duo-seal nut
14108	Seal only (5 pack)
79812	James, as above



Eastern Transmission Mainshafts- USA

USA made Eastern shafts.

36181	1970-84 4 speed chain (35039-70B)
36183	1979-84 5 speed chain (35042-79)



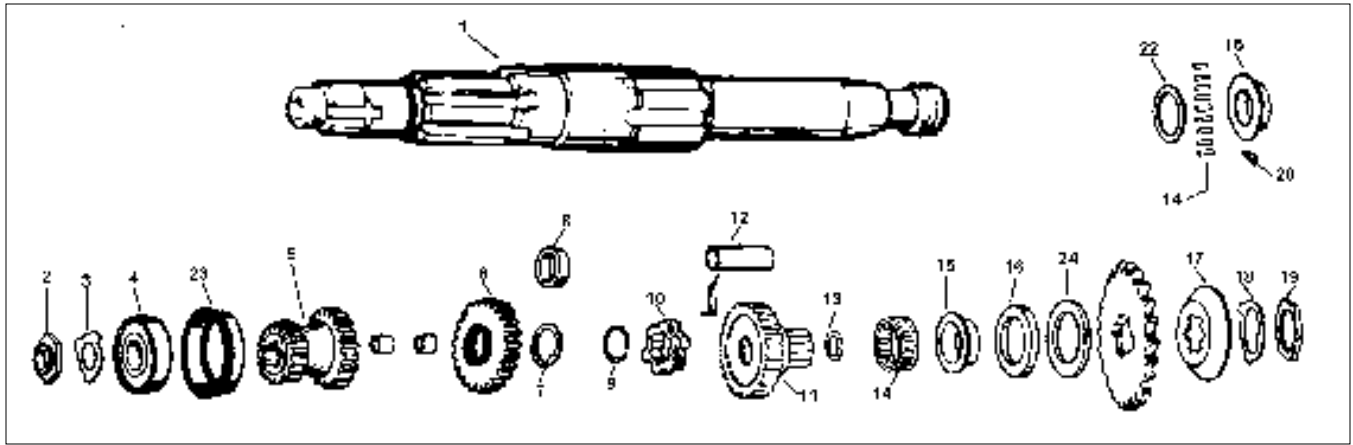
James Shovelhead Main Drive Gear Oil Seal

4 Speed main drive gear oil seal w/metal OD for FX, FLH-80, and Classic models.

79187 1982-84 (37741-82-A) (each)



BT Main Shaft-4 Speed



BT 4 Speed Transmission Mainshaft

#	PCP	OEM	Description	#	PCP	OEM	Description
1	1113	35040-50	Mainshaft 1941-64	14	1119	9084	STD. Main drive gear & C/S roller 1941-77 (set of 44)
	1114	35039-65	Mainshaft 1965-69		1120	9085	+ .0004 As above 1941-77 (43 pk)
	1115	35039-70A	Mainshaft 74" & 80" 1970-E84		1121	9086	+ .0008 As above 1941-77 (43 pk)
		35039-80			1122		+ .001 as above (set of 43)
2	12550	35046-36	Mainshaft nut 1936-84		15603	8905	Main drive gear bearing 1977-81
3	13724	35050-40	Bearing lock tab 1941-on (10 pk)		15604		As above 1982-86
4	15715	9020	Mainshaft bearing 1941-on		15706	8978	Ball bearing 5 speed 1980-E84
5	2310	35282-59	Low & 2nd gear cluster 15 & 20 T FLH 1959-84 4-spd, FX 1971-73		15602	8904	5th gear needle bearing 1980-on 5 spd
	1522	35282-74	Low & 2nd gear cluster 17 & 20T FX 1974-79 4 speeds	15	3453	35171-37	Gear spacer 1941-E77
	2311	35282-79	Low & 2nd gear cluster 17 & 25T FX 1980-86 4 speeds		3454	35070-77	Gear spacer late 1977-79
					3455	35070-80	Gear spacer 1980-81, 80-on 4 spd
6	1531	35306-59	Stock 3rd gear 24T 1959-on 4 spd	16	14045	35230-39	Oil seal 1939-79, double lip
7	11510	35365-36	2nd & 3rd gear washer 1936-86		79351		As above, James (each)
	11511		As above, -.005		14054	37741-67	1980-81
	11512		Washer +.005		14056	37741-82	1982-84 4 speed
	11513		Washer +.010		79374		As above, James double lip (ea)
	11514		Washer +.015	17	2322	35159-39	Main drive gear oil deflector 41-64
8	18561	35322-38	2nd & 3rd gear bushing 1937-59 handshift	18	13727	35216-36	Sprocket lock washer 1941-84 (10pk)
	31391		As above, Jims	19	12554	35211-36	Lock nut 1936-on
9	11069	35337-36	3rd Gear retaining ring 41-on (5pk)	20	10312	35175-38	Drive gear spacer key 41-77 (10pk)
10	1524	35440-38	Shifter clutch gear 1941-on	21	18567	37436-36	Steel bushing (Use 1 in each end of Mainshaft) (5 pk)
11	1535	35065-65B	Main drive 4th gear 26T 1941-E77	22	3458	35131-36	Roller bearing retainer washer STD size 1937-77
	1536	35067-77	As above L77-84 4 speeds		3459		As above, .065 Thick 1937-77
	36231	35067-84	As above, L'84-85 w/o-ring groove		3460		As above, .070 Thick 1937-77
12	18558	35094-65	Main drive 4th gear bushing 65-on		3461		As above, .080 Thick 1937-77
	31229		As above, Jims		11597		Set of 4, .060, .065, .070, .080
13	14011	12013A	Main drive 4th seal L81-90 (5 pk)	23	4786	35100-36	Bearing housing, FL 1936-79
	14103	12022	Main drive 4th seal 66-E81 (5 pk)		36124	35100-79	Bearing housing, FL 1980-on
				24	1281	35079-80	Sprocket spacer 1980-81

Andrews BT 4 Speed Transmission Gear Set for Pan, Shovel or Knuckle (mainshafts and countershafts are not included in these kits)



Each kit includes the following gears:

- 1st (any ratio) (counter & main) 2 pcs
- 2nd (counter & main) 2 pcs
- 3rd (any ratio) (counter & main) 2 pcs
- 4th (counter & main) 2 pcs
- Shift clutches (counter & main)

All kits are supplied with a 1.82 ratio 2nd gears which have a 21T counter gear and 20T on cluster.

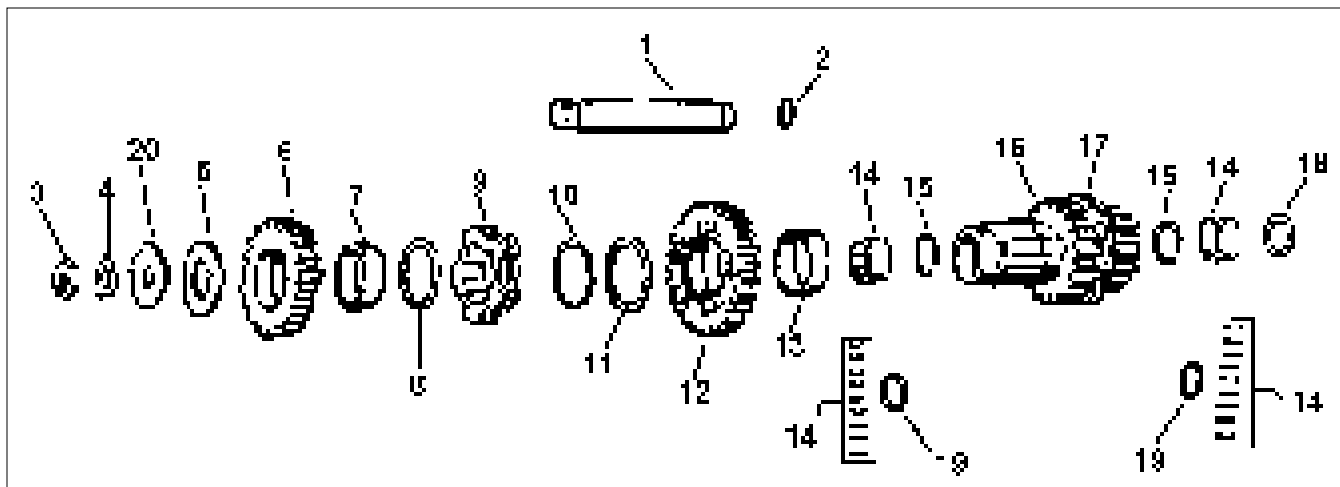
1936-76

- 210150 (2.44 1st, 1.35 3rd)
- 210250 (2.44 1st, 1.23 3rd)
- 210350 (2.60 1st, 1.35 3rd)
- 210450 (2.60 1st, 1.23 3rd)

1977-84

- 210550 (2.44 1st, 1.35 3rd)
- 210650 (2.44 1st, 1.23 3rd)
- 210750 (2.60 1st, 1.35 3rd)
- 210850 (2.60 1st, 1.23 3rd)

Countershaft-4 Speed



BT 4-Speed Countershaft

#	PCP	OEM	Description	#	PCP	OEM	Description
1	1056	35614-65	Counter shaft 1937-E76	10	11071	35810-36	Low & 2nd Gear retaining ring 1941-on 4 speeds (10 pk)
	1537	35614-76	Counter shaft late 1976-79	11	11662	35811-36	Low & 2nd Gear washer 1941-on 4 speeds (each)
	29122	35614-76	As above, T/L	12	1525	35751-36	2nd Gear 21 tooth 1936-79 4 spd
	2395	35614-80	Counter shaft 1980-85 4 speeds		2312	35751-79	2nd Gear 24 tooth 1980-on 4 spd
2	14509	11115	O-ring 1965-85 (10 pk)	13	18565	35791-36	Low and 2nd bushing 41-on 4 spd
3	12514	7911	Lock nut 1936-85 (5 pk)		31393		As above, Jims
4	13712	33082-36	Lock nut washer 1941-79 (10 pk)	14	1119	9084	Main drive gear rollers Std 1941-77 Set of 44
5	11652	35876-36	Thrust washer .074 thick 41-84 (5)		1120	9085	As above +.0004 1941-77 (43 pk)
	11653	35877-36	As above .078 thick 41-84 (5 pk)		1121	9086	As above +.0008 1941-77 (43 pk)
	11654	35878-36	As above .082 thick 1941-84 (5 pk)		15617	35961-52	Needle bearing late 1977-85
	11655	35879-36	As above .085 thick 1941-84 (5 pk)	15	11072	35920-36	Bearing retaining ring 41-E77 (5)
	11656	35882-36	As above .090 thick 1941-84 (5 pk)	16	1529	35713-36	3rd Gear 1941-75 Loose Rollers, 15 T x 17 T
	11657	35883-36	As above .095 thick 1941-84 (5 pk)		3441	35716-76	3rd Gear 1976-84 4 speeds FL 81-84, FX L76-83
	11658	35884-36	As above .100 thick 1941-84 (5 pk)	17	3444	35635-69	7T speedo drive gear FL 1969-80, FX 1971-72, FXWG 1980-on
	11659		As above .105 thick 1941-84 (5 pk)	18	11663	35915-36	Bearing retainer outer washer 1941-on (5 pk)
	11660		As above .110 thick 1941-84 (5 pk)	19	11664	35917-36	As above, inner 1941-E76 (5 pk)
	1187	35875-36	Thrust washers .074 to .100 1941-on (set of 7)	20	4749	35630-36	End plate kicker side. BT 41-79 (5)
6	2308	35765-36	Low gear 26 tooth 41-on 4 speeds				
	1523	35717-74	Low gear 24 tooth 1974-86 4 spd				
7	18564	35789-36	Low gear bushing 1937-84				
	31392		As above, Jims				
8	11661	35812-36	Low Gear washer 1941-84 (ea)				
9	1527	35665-36	Shifter Clutch Gear 41-84 4 speeds				



Countershaft Gear End Thrust Washer Set

Replaces OEM 35875-36. Complete set of washers includes one of each size .074, .078, .082, .085, .090, .095 and .100. Used on all 1941-on Big Twins. 1187



Countershaft Speedo Gears

PCP	Application
19356	Speedo drive gear 1937-E61 (35635-36)
19357	As above 1962-68 (35635-62)
3444	7T As above, FLH 1969-80 for use with # 4633 speedo drive (35635-69)



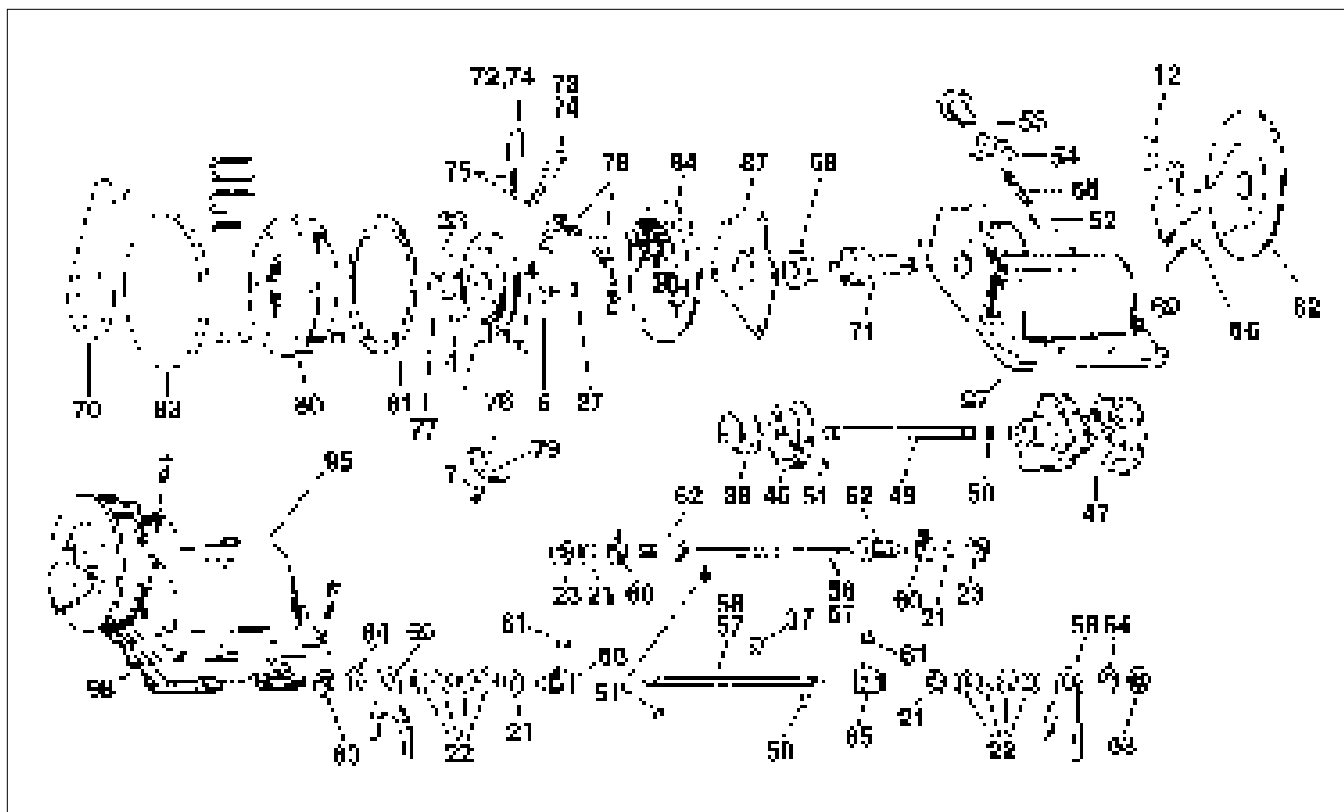
Transmission Rollers

Sold pack of 100

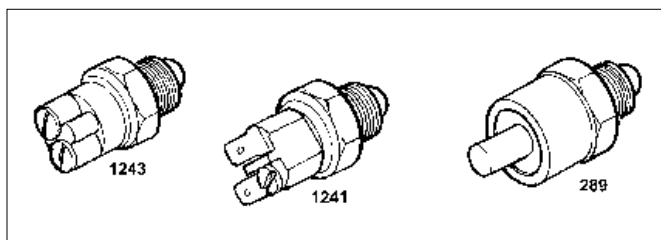
BIG TWIN MAIN DRIVE GEAR & COUNTERSHAFT

PCP	OEM	Size
15306	9084	Std
15307	9085	.0004
15308	9086	.0008
15309	9086+1	.001

Ratchet Top Big Twin 1952-E79



#	PCP	OEM	Description	Year	U/M	#	PCP	OEM	Description	Year	U/M
4	10115	623	Roll pin	74-E89	10 Pk	64	13723	34180-33	Lock tab	41-85	10 Pk
12	24512	1767W	S/S lever screw	52-77	12Pk	65	36104	34182-76	Shift finger (late)	L76-E79	Each
21	13555	6750	Shim .007	41-85	10 Pk	66	18714	34428-52	Bushing, shift arm	52-E79	Each
22	13556	6752	Shim .015	41-84	10 Pk	68	18554	34435-52	Shaft bushing	41-78	Each
23	11701	6754	Spacer 3/32	35-E79	5 Pk	69	1181	34447-52	Chrome lever, FL	52-E79	Each
33	10126	9106A	Pin, pawl	52-E79	10 Pk		37219	-	As above, zinc		
37	11018	11036	Retainer, shaft	L79-85	10 Pk	70	1453	34447-74	FX Lever cadmium	74-E79	Each
38	13172	33390-36	Gear spring	41-E79	Each	71	36105	34453-52	Shifter shaft	52-E79	Each
45	36100	33960-36A	Gear	41-E79	Each	72	1180	34477-53	Shifter pawl L	52-E75	Eac
47	36101	34019-73	FL Shift cam (cast)	52-E79	Each	73	1201	34478-53	Shifter pawl R	52-E75	Each
49	16517	34030-36	Cam shaft, handshift	41-76	Each	74	36106	34478-75	Shifter pawl (late)	L75-E79	Each
	16527	34031-41	Cam shaft, footshift	41-78	Each	75	13182	34482-53	Pawl spring	52-E79	10 Pk
50	14548	34036-80	"O" Ring	L80-86	10 Pk	76	36107	34488-52	Pawl carrier	52-E79	Each
51	2589	34050-36	Lock screw	36-77	Each	77	18555	34498-52	Pawl bushing	52-E79	Each
52	36102	34062-52	Cam follower	52-79	Each	78	13183	34500-52A	Carrier spring	52-E79	10 Pk
53	36103	34064-52	Cam retainer	52-E79	Each		1179	-	Spring kit	52-E79	4 Pc
54	13720	34066-52	Lock tab	52-E79	5 Pk	79	36108	34525-54	Pawl retainer	52-E79	Each
55	13178	34068-52A	Spring, follower	52-E79	10 Pk	80	1182	34551-52	Shift cover (alu.)	52-E79	Each
56	2587	34140-36	Fork shaft	37-E76	Each		4580	34551-52	Shift cover (chr.)	52-E79	Each
57	2588	34186-76	Fork shaft	L76-84	Each	81	25113	34552-52	Cover gasket	52-E79	10 Pk
59	228	34158-36	M/S Shift fork	41-85	Each	82	1157	34555-52	FL Chrome cover	52-E79	Each
58	229	34159-36	C/S Shift fork	41-85	Each	83	19651	34555-71	FX Zinc cover	71-73	Each
60	2481	34165-36	Shifter finger	41-E79	Each		1158	34555-74	FX Chrome cover	74-E79	Each
61	1543	34168-39	Shift finger	41-E79	Pair	84	36109	34560-52	Adapter plate	52-E79	Each
62	2480	34175-36	Bushing fork	41-E79	Each	87	79321	34565-52	James plate gasket	52-E79	10Pk
63	12549	34179-33	Nut, bushing	36-84	Each	97	4829	34803-59	Shift top bare (pol)	59-E79	Each
						98	79323	34824-36	James top gaskets	36-E79	10 Pk

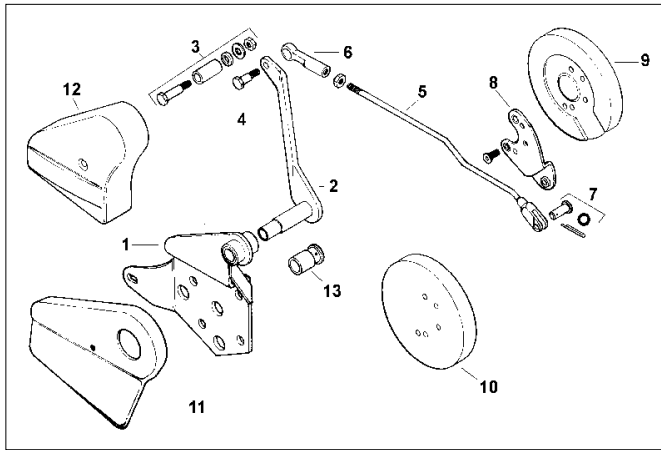


Neutral Switches

OEM type replaces the following on FLH-FX Models 1959-up.

PCP	OEM	Type
289	33900-59	Stud
1241	71507-71	Blade
1243	71507-65	Screw 1965-E78

Shifter Linkage



FL Big Twin 1952-78

#	PCP	OEM	Description
1	401	33630-70	Chrome custom shifter brkt. FLH 1970-on and 1952-on if used with our #399 Lever
2	3194 399	33630-70 33660-70	Chrome stock bracket FL 1970-84 Chrome shift lever inner FL 1970-on and 1952-on (Not Splined) if used with #401 shift bracket
3	19649 19650 2124	33660-54 33660-54 33775-37	Chrome inner shifter 1952-69 As above, zinc Shifter lever stud and bushing kit 1936-54 hand shift (cad)
4	221 2123 222	33878-51 - 33851-52	Shifter lever shoulder bolt 1936 Same as above but cadmium Chrome shifter rod FLH 1952-84 and FX 1971-73
5	220	33870-51	Chrome shifter rod end 1936-on
6	10105	42269-30	Clevis pin kit. FL 1952-on, FX 1971-73 and XL 1975-77 (5 pk)
7	1181	34447-52	Chrome shifter shaft lever FL 1952-79 and FXE 1971-73
8	1157	34555-52	Chrome shifter drum dust shield FL 1952-79 Footshift
9	1158	34555-74	Chrome shifter drum dust shield FX 1974-79
10	2425	33644-65	Chrome shifter lever cover FL 1965-88
11	3793	33644-52	Chrome shifter lever cover. FL 1952-64
12	18548 18611	33638-52 33638-70	Shifter bracket bushing 1952-69 Shifter bracket bushing FL 1970-93



Chrome Dust Shield and Shift Lever Set

Complete with mounting hardware.

PCP	Fits	Type
3796	1952-E78 FL, covers ratchet drum	Full
45333	1952-E79 FL	Stock
45334	1974-E79 FX	Stock
3800	1974-E79 FX, covers ratchet drum	Stock



Transmission Top Cover Screw Kit

Plated stock fasteners & special vent screw. Fits BT 1936-on 4 speed.

PCP	Year	Style	Finish
9300	1929-73 45's	Stock	Chrome
9301	1929-73 45's	Stock	Cad
9612	1936-55	Stock	Chrome
9613	1936-55	Stock	Cad
2159	1956-64	Stock	Chrome
5340	1936-64	Allen	Chrome
5191	1956-64	Stock	Cad
5339	1965-79	Allen	Cad
5338	1965-79	Allen	Chrome
9656	1979-85	Stock	Chrome
9657	1979-85	Stock	Zinc



Shifter Rod Linkage

Available as complete rod, end and shoulder bolt.

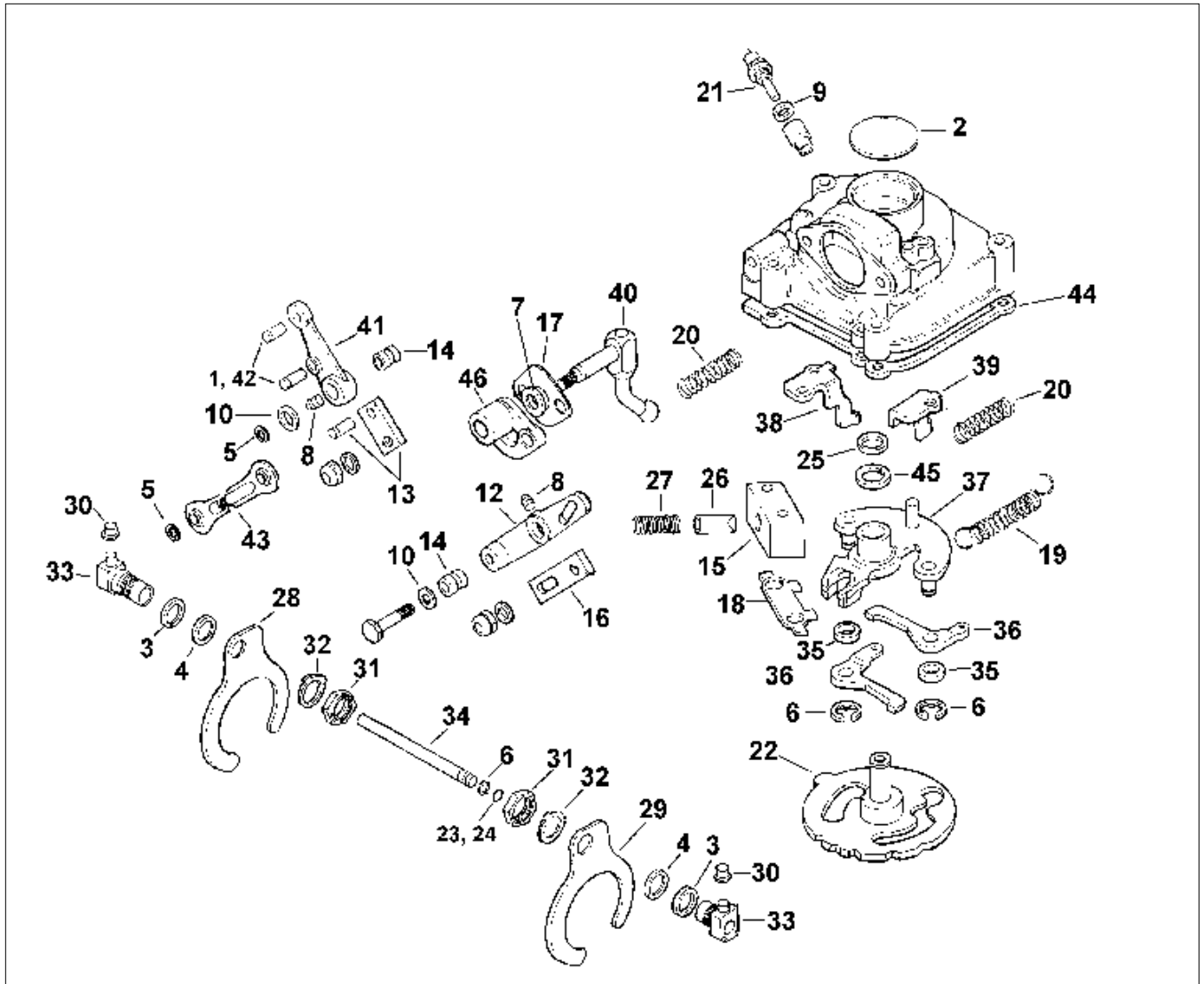
PCP	Description
37214	(A) Complete chrome rod kit (33851-52)
37212	As above, cadmium
221	(B) Chrome shoulder bolt & nut (33878-51)
9706	As above, parkerized
2123	As above, cadmium
220	(C) Chrome rod end lolly-pop (33870-51)
16294	As above, parkerized
16295	As above, cadmium
10105	Zinc clevis pin (42269-30) (5 pack)

Chrome Shifter Covers

PCP	Fits
45067	FX models 1971-73 (33644-71)



BT Rotary Shifter 1979-86 4 Speeds



#	PCP	OEM	Description	#	PCP	OEM	Description
1	10100	215	Lever pin FWXG 1980-on (10 pk)	24	14533	34036-80	O-ring 1980-84 (10 pk)
2	10602	650	Plug (each)	25	11062	34040-52	Retaining ring (10 pk)
3	13555	6750	Shim (.007) (10 pk)	26	36102	34062-52	Cam follower (ea)
4	13556	6752	Shim (.015) (10 pk)	27	13178	34068-52A	Cam follower spring (10 pk)
5	11011	11016	Snap ring (10 Pk)	28	228	34158-36	Main shift fork (ea)
6	11018	11036	Pawl retainer (10 pk)	29	229	34159-36	Countershaft shift fork (ea)
7	14010	12010	Cover oil seal (5 pk)	30	1544	34168-52	Finger roller (2) (pr)
8	10515	25715-47	Grease fitting (10 pk)	31	12549	34179-33	Bushing nut (ea)
9	79116	25811-11	Switch washer (20 pk)	32	13723	34180-33	Lockwasher (10 pk)
10	11533	32535-48	Lever washer (5 pk)	33	36115	34184-79	Shift finger (ea)
12	4787	33177-79	Lever complete FL-FXWG (ea)	34	36116	34186-76	Fork shaft (ea)
13	36111	33185-79	Shift rod assembly FX-FXE (ea)	35	36117	34461-72	Shift pawl spacer (pr)
14	18700	33187-79	Spacer STD (5 pk)	36	36118	34476-72	Shifter pawl 1979-86 (ea)
	18701	-	Spacer .020 O.S. (5 pk)	37	36119	34494-74C	Pawl carrier (ea)
15	36112	33188-79	Plunger body (ea)	38	36120	34517-80	Rear pawl stop (ea)
16	36113	33190-79	Lever arm FL-FXWG (ea)	39	36121	34518-80	Front pawl stop (ea)
17	25111	33196-79	Cover gasket (10 pk)	40	36122	34652-80	Shift lever shaft (ea)
18	13715	33197-79	Bolt lock (10 pk)	41	16528	34655-79	Lever complete FX-FXE (ea)
19	13169	33199-79	Pawl spring (10 pk)	42	10137	34658-79	Lever pin (ea)
20	13170	33201-79	Carrier spring (10 pk)	43	16562	34614-74	Rod linkage FX (ea)
21	28101	33901-79	Neutral switch (ea)	44	79324	34824-79	Cover gasket L1979-86 (10 pk)
22	36114	34020-79B	Cam assembly (ea)	45	11532	35336-74	Thrust washer (5 pk)
23	14039	34036-36	Oil seal (10 pk)	46	36138	33174-79	Chrome shift shaft cover (each)

Shifter



Big Twin 4-Speed Ratchet Top Assembly

Complete assembled unit includes all internals. Replaces 34799-65 for all FL's 1952-78, can be used on FX but shifter pattern will be reversed. FLH type gives 1 down & 3 up shift pattern.

36902 Plain finish
36903 Chrome finish



4 Speed Trans Top 1979-84

All parts completely assembled with a natural finish except the chrome plated arm with grease fittings. USA made.

PCP Application
36904 FLH
36906 FXE

Ratchet Drum Arm

Reverse OEM style as used on 1974-E79 FX-FXE. Replaces 34447-74.

1453 Cad



Shifter Control

Our original FLH type shifter kits allow the use of foot pegs or floorboards. Units allow 1 down and 3 up shifting pattern. The #6318 and #90215 kits include proper ratchet arm and dust cover. All other kits attach to existing components on shifter mechanism.

PCP Application
6318 1952-79 FL-FLH 4 speed
6319 1979-on FLH 4 speed
 1980-85 FXWG 4 speed
90215 1974-78 FXE 4 speed



Shifter Cam Plunger Kit BT 1936-76

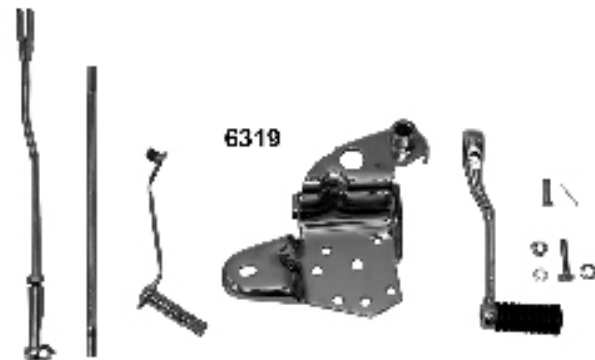
9983 Kit
15575 Bearing only (1/2") 1941-76 (10 pk)



Clevis Pins (5 pack)

Zinc plated pins include cotter pins and washers.

PCP Application
10105 Brakes 1930-69 and 1982-on and shifter 1952-84 (42269-30) also XL 75-76
10146 Brakes 1970-81 (42269-70)



FLH-FXWG Forward Control

Forward shifter control unit for all FLH 1979 up, FXWG 1980-83. This kit is identical to the #6318 less the ratchet arm and dust cover, can also be used on ratchet top & speed models 1952-79 when it is not desired to remove the arm and dust cover.

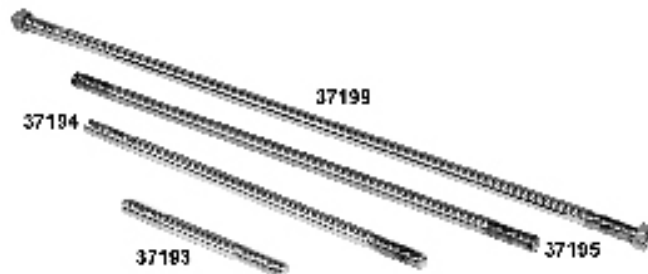
6319

Shifter



Shifter Pegs

PCP	Style	Type
39019	O-Ring	Rotating
39017	Railer	Chrome with rubber
39024	Cats Paw	Chrome with rubber, 3/8" stud
39025	Cats Paw	Chrome with rubber, 5/8" stud
39018	Cats Paw	Chrome with rubber 1" longer
1402	O-Ring	Chrome with o-ring
1147	Stock	Black with 1/2" stud
5432	Stock	Black with 3/4" stud
5433	Stock	White with 3/4" stud



Straight Shift Rods

Rods measure 5/16" in diameter with 5/16 x 24 thread at each end.

PCP	Length	Finish
37193	3-5/8"	Chrome
37194	7-3/4"	Chrome
37195	10-5/8"	Chrome
37211	11"	Chrome
37198	11-3/4"	Chrome
37191	12-1/2"	Chrome
37192	13-1/2"	Chrome
37199	14-1/2"	Chrome
37201	20-1/4"	Chrome



Chrome Diamond Accent Shift Peg

Peg features diamond shape rubber insert and short stud (1/2"), chrome casting and fits 1941-on models.
39142



Chrome Heim Joints

Heim joints have a variety of uses and are especially useful for custom shift and brake linkage creation. The 5/16" joints are available with left or right hand threads.

PCP	Size	Type
71009	1/4" x 1/4-28	Female
71010	5/16" x 5/16-24	Male
71011	5/16" x 5/16-24	Female
71012	5/16" x 5/16-24	Male (left hand thread)
71015	3/8" x 3/8-24	Female



Forked Rod End Clevis

Clevis has 5/16 x 24 threads for use on shifter or brake rods.

PCP	Pin Size
37217	1/4"
37218	5/16"

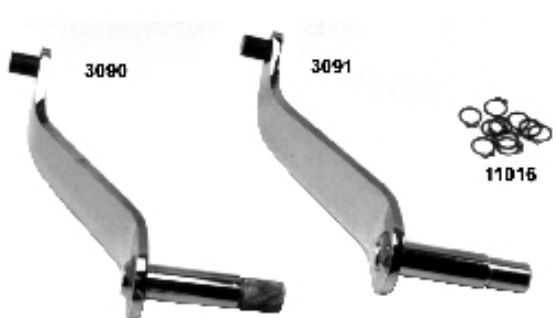


Chrome Cover Shifter Lever

For use on all 1974-on FX models except FXWG and FXR.

44051 60400-74

Shifter Brackets



Chrome Shifter Shafts

A wide selection of all-chrome shifter shafts to replace the OEM part on many Big Twin models 1970-91.

PCP	Fits
3090	4-speed FL 1974-84 splined (34660-74A)
3091	4-speed FL 1970-73 unsplined (34660-70)
3092	4-speed FX with midshift 1974-79 (34574-74)
11016	Retaining ring for the shift arm on 1965-86 4-speeds (11031) (10 pack)



Shifter Lever

Cast alloy for 4 speeds 1979-84.

PCP	Type
4787	FLH plain finish alloy (33177-79)
36128	As above, chrome steel
16528	FX-Except FXWG plain finish (34655-79)
36135	As above, chrome



Heavy Duty! Frame Mount Shifter Bracket

Use on 1952-1979 FL-FLH. Also used as forward control on FX-FXS. Fabricated from 5/16" thick steel plate. Virtually unbreakable! Replaces OEM 33630-70. 401



FL Shift Lever Bracket

Made from heavy gauge plate steel with added support plates in the peg mount area. This shifter bracket does not suffer the vibration cracks that commonly affect the OEM and other aftermarket parts. Bracket comes complete with bushing and zerk fitting installed. 3194 1970-84 (33630-70)



1980-86 FXWG Shifter Bracket

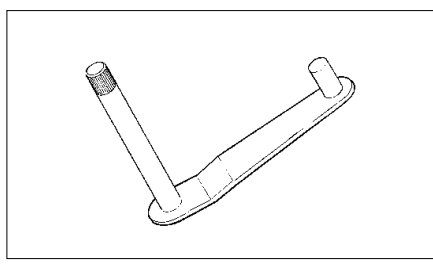
This heavy duty bracket features a built in footpeg mount and chrome finish. Peg clevis is aligned to match with forward brake mounts. Fits FXWG models 1980-86, and many custom applications. Replaces 33683-80. 1454



Inner Shifter Levers

Chrome plated replacement shifter helper arms are available in a splined and non-splined version. Replaces OEM 33660-52.

399	Non-Splined
1455	Splined



Inner Shifter Lever-Cad

Splined shaft and lever for all 1974-84 FX models only with four speed transmission. Goes thru Inner Primary Case

PCP	Years
4577	1974-E79 (34574-74)
4578	1979-84 (34574-79)



FLT Shift Shaft Spacer Kit

Short spacers are for use with heel/toe shifters. Longer spacers are used to eliminate the heel shifter or for use on single shifter models.

PCP	Description	1980-on
11824	Short without ring	
11846	Short with anti-rattle washer	
11847	Long with anti-rattle washer	

Shifter Levers



XL-XLH Splined Shifter Lever

Replaces OEM 34666-75. Cast alloy type for use on foot assembly. Fits 1975-76 models ONLY.

2034 Chrome

82063 Polished

Note: Tighten bolts only to 10 foot pounds, overtightening could cause clamp failure.



Heel-Toe Shifter Lever

Chrome plated shifter. Fits all FL models 1965-84 with foot boards or forward controls.

PCP Fits

4442 Non splined lever (34690-65)

3787 Splined lever (34690-74A)

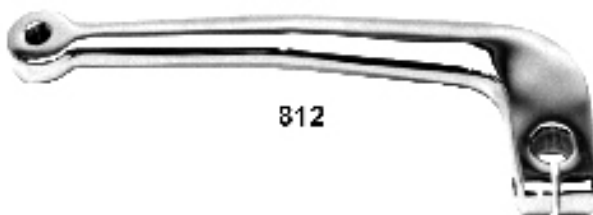


Chrome Heel Toe Shifter

PCP Application

37515 FLT 1983-on outer rear lever (33640-83)

37516 Fits toe only on FLT 1983-on (33895-82) (each)



FX Chrome Shifter Lever

Fits all FX models 1974-85 with shifter through primary case.

812 FX (34564-74A)



XL-FL Shifter Lever

Replaces OEM 34606-71 for Sportsters 1954-74, FLH and PC forward controls 1954-79. Chrome Plated.

PCP Description

813 Non-splined (34606-54TA)

3059 Splined lever (32T) (34606-74A)

FXWG Chromed Shifter Lever

Fits models 1974-84 and FXWG models 1980-86 with 32T splines and FLHS 1981-86 (OEM 33664-81).

1451 Splined

37511 No spline



XL-FL Stainless Steel Shifter Lever

Replaces OEM 34606-71 for Sportsters 1954-74, FLH and PC forward controls 1954-79.

PCP Description

37514 Non-splined (34606-71)

37513 Splined lever (32T) (34606-54A)



FXR Shifter Lever

Fits all FXR models 1982-94 and FXRT 1982-99.

3254 Chrome (34599-81)



Late XL Splined Shifter Lever

Fits Sportster models 1977-85.

2044 Chrome (34606-77)

Shifter



FXST Replica Forward Shifter Kit

Complete kit with all hardware necessary for installation on 4-speed models 1952-84 and 1981-on 5-speed Big Twin models. Use in conjunction with our FXST Replica Controls, as all kits place pegs in a forward position parallel to the peg on brake side. Foot rests on peg while shifting for added comfort. This is an exact stock replacement in chrome for the 1980-85 FXWG. Kit includes chrome heavy duty shifter bracket, inner lever shaft, rod, rubber shift peg and foot peg, display packaged and labelled with detailed instructions and assembly diagram for each model listed below.

- 6460** 1952-78 FLH Ratchet top 4 speed
1971-73 FX-FXE
- 6463** 1974-78 FX-FXE Ratchet top 4 speed
- 6461** 1979-84 FLH-FXWG Rotary top 4 speed
- 6462** 1979-84 FXE Rotary top 4 speed
1981-on FXR-FXS-FXRS 5 speed



4639



37202

Self-Aligning Rod Ends

Heim joint type swivel allows alignment at up to 28° off centre, self lubricating brass ball socket available for shifter or brake rod ends, 5/16 x 24 thread, for rod end, with integral stud (5/16 x 24) or with 5/16 hole for attaching as direct bolt on.

- 4639** With stud
- 37202** With hole, cad



Chrome Shift Rod Assembly

Chrome shifter rod assembly fits FX 1974-85 and XL 1975-76 (not FXWG).

- 16254** Assembly (34614-74)
- 16255** Shift rod end (42585-75) Fits XL 1975-76 and FX models when converting to forward controls



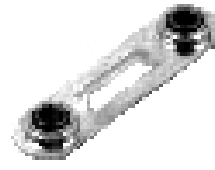
Chrome Steel FXWG-FLH Shift Arm

Fits 1979-84 4-speed models, made of forged steel. Includes bushing and grease fitting, replaces 33177-79. Our forged parts are drop forged from red hot billets of steel, just like a connecting rod, for the ultimate in strength!

36128



16562



16564

FX-FXE Shift Linkage 1974-85

16562 Chrome assembly with adjustable ends, not FXWG but will fit Sportster 1974-85 (34614-74)

16532 Cad as above

16533 Cad right threaded end only

16564 Zinc plated, non adjustable style, with swivel ends (34659-79)



4511

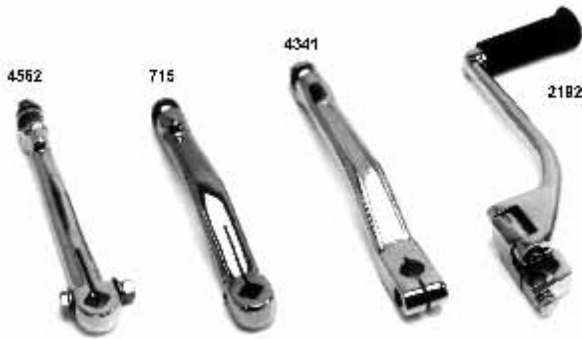
Police Style Jockey Shift Kit

Clamps to all BT front frame tubes for 4 speed ratchet type, 4 speed rotary and 5 speed models. PCP# 90210 and # 90212 feature a smooth gate for shifting. Use either rocker clutch pedal or jockey pedal and will fit with 3.5 or 5 gallon tanks.

PCP Description

- 4511** 1936-79 only 4 speed handshift
- 90210** 1952-79 BT 4 speed ratchet top and 1979-84 FLH
- 90212** 1979-on 4 speed rotary style, 1979-on FXE and 5 speed FX, FLST

Kickarms & Pedals



Early FL Style "Straight" Kickarm

The early style, "straight" FL kickstart arm. Sitting closer to the chassis, this kickarm was fitted as original equipment on FL models 1954-69 and FX models 1971-72. Note that this kickarm will not clear most accessory exhaust systems, but will work with original equipment exhaust systems.

PCP Description

- 4562** Chrome (33068-54)
- 59599** Black

Kicker Arms with Offset

These custom look kicker arms are constructed of forged steel for lasting durability.

PCP Description

- 59606** Stainless, heavy
- 59607** Black, standard (33052-71)
- 715** Heavy duty arm fits 1954-84 FX-FL and 1952-79 XLCH (33057-72)
- 4341** As above, Stroker (33052-71)
- 2192** Stock fold-out arm fits 1977-84 FX-XL (33061-89T)

Note: All are late style offset, except 4562 which is stock type for 1954-69 FL with 2:1 exhaust as it fits closer to the chassis.



Bicycle Style Kick Pedal

A reproduction of the original OEM kickstart pedal used from 1916-58. Also fits the OEM kickarm through 1976 as well as many aftermarket kickarms.

PCP Description

- 2422** Black rubber with chrome metal (33175-16)
- 59614** Red as above
- 59615** White as above

Cats Paw Kicker Pedal

- 39032** Kick pedal

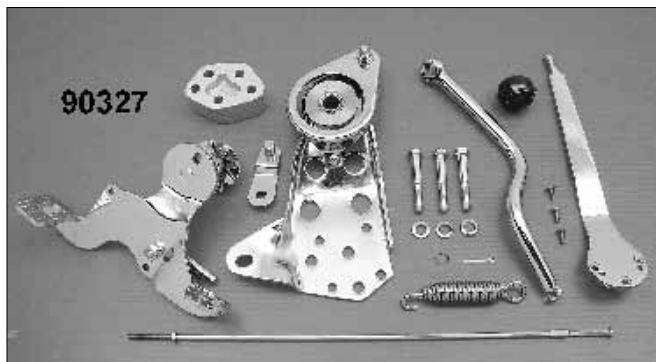
Stock Style and Custom Kick Pedal

PCP Description

- 714** With black swivel (33175-16B)
- 23094** As above in white
- 2584** Black replacement rubber (33182-63A)
- 1400** O-ring "Flat" pedal with o-rings
- 2467** O-ring for #1400 pedal
- 39201** Chrome "Railer" flat pedal

Heavy-Duty Cast Kick Pedal

- 586** Polished brass (Preston)
- 39210** Polished brass USA
- 587** Chromed (Preston)
- 39211** Chromed USA



Bicycle Style Kicker Pedals

Replaces 33175-16A.

- 19269** Cad plated
- 19270** Cad and parkerized
- 29407** T/L Chrome as above

BT Jockey-Rocker Clutch Kit 1987-on

Includes a slap-stick and complete chrome rocker clutch assembly. Jockey handle mounts directly to trans selector arm.

PCP Application

- 90327** 1952-78 Ratchet top 4 speed
- 90328** 1979-84 Rotary top 4 speed

BT Kicker Kits 1936-84 4-Speed



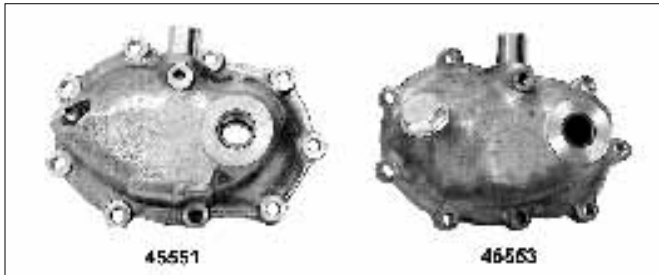
Complete Kickstarter Conversion Kit

This kit is designed to add a kicker to the present 74" or 80" electric start four speed transmission. The kit includes a reinforced kicker cover, chrome offset kicker arm and all other parts to make the kick conversion complete.

- 90161 Chrome cover
- 90160 Polished cover

Chrome Extra Heavy Duty Kicker

Complete kit fits 1936-84 4 speed.
6768



Reinforced Kicker Cover

Extra thick for 1936-85 3&4-speed Big Twins, die-cast with machined flat surface. Accepts allen or cap nut for mounting. Use with 1975-on type release bearing only.

- 6769 Chrome cover
- 5410 Allen screws
- 36110 Finger shaft, short
- 3854 Finger only BT 75-86
- 1425 Release kit 1941-64
- 2631 Release kit 1970-84

Big Twin Kickstart Covers

These covers fit 1936-84 Big Twin 4 speeds and are available in your choice of chrome or polished finish.

- | PCP | Description |
|-------|--------------------------------|
| 1554 | Polished (33277-36A) |
| 1555 | Chrome (33277-36A) |
| 45551 | Cast as OEM 1937-50 (33277-36) |
| 45553 | Cast 1951-67 (33277-36) |
| 45554 | Cast finned design 1951-67 |



Chrome End Cover (Electric Start Only)

Fits 1970-84 FLH without kickstart hole.

- 45550 33276-70



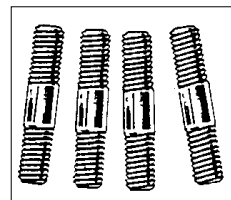
White Kick Pedal Assembly for 1936-76

23094

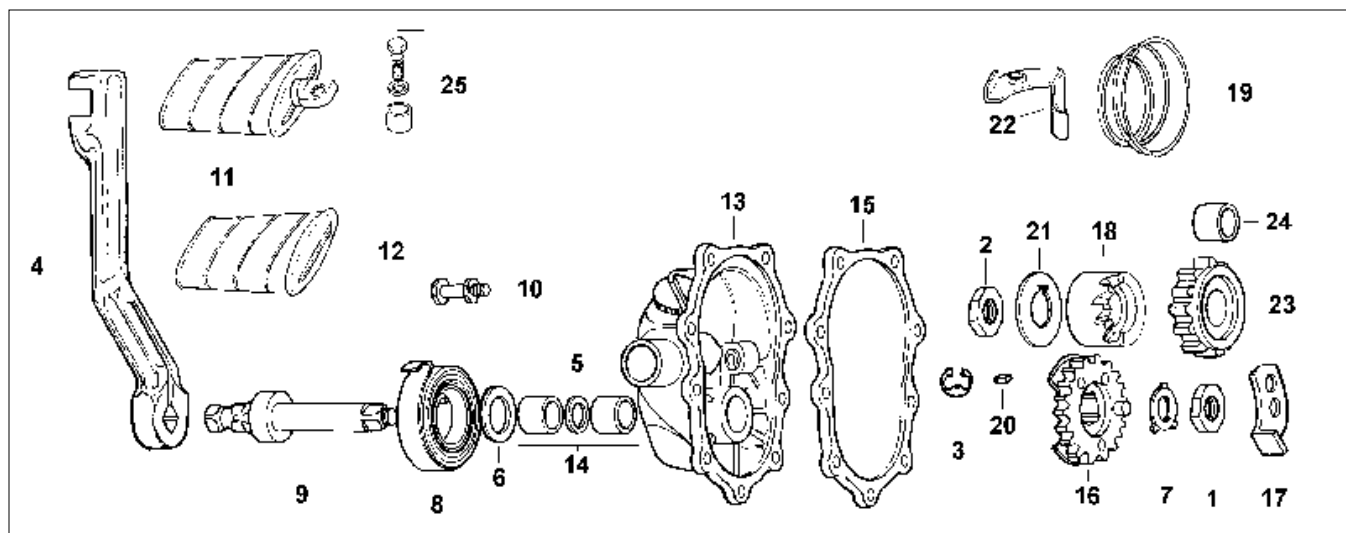
BT Kicker Cover Stud Set

9 Piece set to fit 1936-85 4 speed BT models. Replaces 33298-36.

- 1448 1936-64
- 1449 1965-85



B.T. Kickstart Parts 4-Speed



#	PCP	OEM	Description	#	PCP	OEM	Description
1	12514	7911	Kickershaft gear nut 36-85 (5 pk)	14	18542	33288-37	Kick starter bushing kit 37-85
2	12518	7977	Mainshaft gear nut 36-84 (5 pk)		31385		As above, Jims 2 pc kit
3	11002	11000	Release finger snap ring 41-* (10)		31386		Jims +.005 2 pc kit
4	715	33057-72	Kick start crank lever (chr.) 36-*	15	79313	33295-36	Cover gasket 36-84(10 pk)
5	14038	33076-37	Kick start shaft oil seal 37-80 (5pk)		79511	33295-36-X	As above w/silicone 36-85 (5 pk)
6	1534	33080-36	Kick start washer FX, FLH 37-69	16	1203	33350-36	Gear starter crank 24 T 41-*
7	13712	33082-16	Start crank lockwasher 36-84 (10)	17	1206	33353-36	Start crank bump plate 41-E78 (5)
8	13168	33085-36	K/start lever return spring 36-84		734	33353-78	As above, L78-80 (each)
9	1057	33096-54B	Kick starter shaft 36-79	18	1204	33381-39	Starter clutch gear 41-E75
10	10850	33152-59	Chrome kick spring stud 41-84	19	13174	33391-36	Starter clutch spring 36-84 (5 pk)
11	714	33175-16A	Kick starter lever pedal 36-84	20	10315	33393-50	Starter clutch key 41-85 (10 pk)
12	2584	33182-63A	Black kick pedal rubber only 41-*	21	13719	33396-39	Starter clutch lockwasher 41-* (10)
	23090		White kick pedal FL 1963-on	22	1207	33429-39	Deflector FL, FX 41-77 (5 pk)
13	1554	33277-36A	Plain trans end cover 41-*		3903	33429-80	Deflector FXWG, FXB 78-79 (5pk)
	1555		Chrome trans cover 1941-*	23	1205	33430-50	Mainshaft starter gear 16 tooth .925 O.D. 41-*
	6769		As above, reinforced, 1941-*	24	18543	33438-50	Kick starter gear bushing 41-on .925 I.D.
					31388		Jims .925 I.D.
					18544		As above, .907 O.D.
					31387		Jims .907
				25	1148		Kick pedal pin & bushing kit 41-on

Stock Kick Starter Rubber (each)

Fits FL, XL & "74" 1963-on and also fits passenger pegs for FX 1977-on.

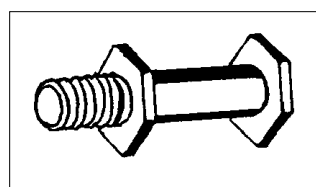
3902 Black (33182-63A, 33189-63)



Transmission Kicker Cover Stud Kit

For Big Twin 1936-84. Includes 9 short and 4 long.

9637 Parkerized



Starter Spring Stud BT

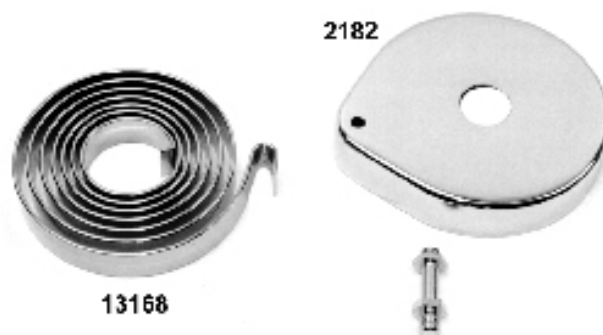
1941-84 Kickstart

PCP Description

10850 Chrome
10854 Cad
9717 Parkerized

45's 1941-63

9754 Chrome
9755 Cad
9756 Parkerized



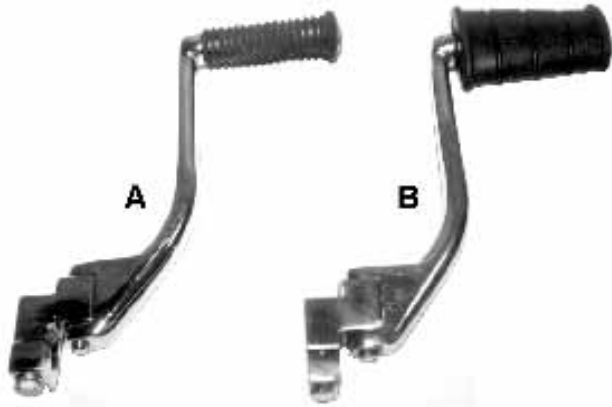
Kickstart Spring & Cover for Harley

This show chrome cover fits over the kicker spring on FL's 1941-69 and FX's 1971-82.

PCP Description

2182 Cover only (33150-59)
13168 Kick start lever return spring, chrome BT 36-84 (33085-36)
13083 As above, black (33085-36)
13167 XL 45" chrome spring (33084-41)
13084 XL 45" black spring (33084-41)

Kicker Arms



Chrome Fold-Out Kicker Arms

Replaces 33057-77 on 1977-84 FX-XL models.

PCP Type

2192 (A) Stock (33061-89T)

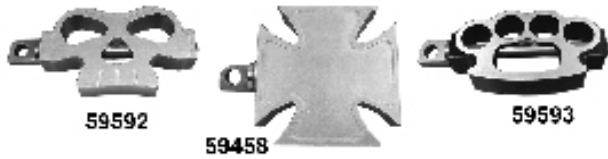
59457 (B) Flat kicker pedal that spins



Sifton Kick Gear/Shaft Assembly

Includes large gear, corresponding shaft, nut, locktab and thrustwasher.

36031



Billet Alloy Kicker Pedal

PCP Style

59458 Maltese

59592 Skull

59593 Knuckle



BT Small Parts Only Kicker Kit

Includes 16T ratchet gear set, 24T crank gear, kicker shaft, ratchet spring, locktabs, nuts and key.

36028



Jim's Machining- Big Twin Kicker Shafts

Two models offered, stock replacement and a longer version for all 4 speeds 1937-84.

31281 Stock style (replaces 33096-54B)

31282 3/4" longer style for kicker arm to exhaust clearance (eliminates the need for a fold out kicker arm)

Transmission Hardware



Transmission Plugs

- A. Custom fill plug for all BT 1940-on with 4 speed trans.
1743 Chrome
- B. Custom cap style plug BT 1940-on with 4 speed trans.
5392 Chrome
- E-G. Stock reproduction is available in standard or oversize self tapping for BT 1940-on with 4 speed transmission.
1482 Standard chrome (E)
1780 Standard cad (E)
1781 Oversize chrome (G)
5241 Oversize cad (G)
- F. Chrome plated custom fill plug is designed to restore "pulled" threads in the Harley transmission side cover. Fits all Big Twins 1940-on with 4 speed transmission.
5240
- H. Stock reproduction for 45's 1941-on.
5298 Chrome
5284 Cad
9719 Parkerized
- I. Knurled transmission filler plug for BT 1958-80
9400 Chrome plated alloy
9401 Brushed aluminum



Transmission Side Cover Kit

Chrome plated transmission side cover and clutch arm nuts fit all Harley Big Twin 1936-on and 4 speeds.

1693 Acorn



Transmission Side Cover Kit

Stock Harley hardware kit contains nuts and washers for the transmission side cover and clutch arm. Available chrome or cad plating. Fits all Big Twins.

2157 Chrome
9671 Parkerized



Transmission Side Cover Kit

Available in two styles these chrome plated transmission side cover nuts have extra deep threads for long studs. Fits all Big Twin 1936-84 4 speeds.

5342 Acorn
5344 Cap



Transmission Side Cover Screws

Chrome plated allen screws replace transmission case studs and nuts on Harley Big Twins 1936-on 4 speeds.

5410

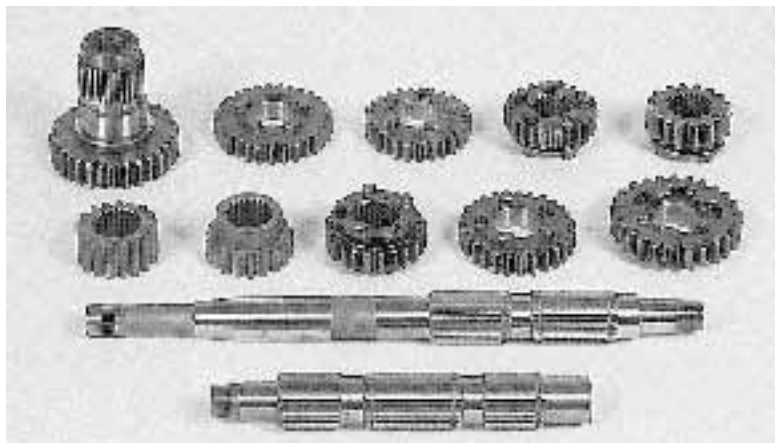
Andrews 5 Speed

Complete 5 Speed Gear Sets

Transmission gear sets for 5 speed EV-80 bikes are available as complete kits. Each kit includes the following parts:

- First gears main & counter 2 pcs
- Second gears (counter and main) 2 pcs
- Third gears (counter and main) 2 pcs
- Fourth gears (counter and main) 2 pcs
- Fifth gears (counter and main) 2 pcs
- Countershaft 1 pce
- Mainshaft 1 pce

296081 Chain drive 1981-84 (close ratio)

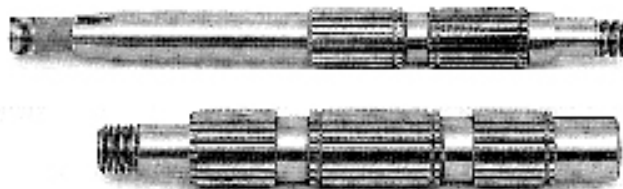


BT 5 Speed Transmission Shafts

Replacement trans shafts are made from high nickel steel with aircraft quality heat treatments.

296800 35042-79 Chain drive mainshaft
1981-84

296700 35632-79 Countershaft all 1979-06



Andrews BT 5 Speed Trans Gear Sets

PCP Description
296082 3.24 1981-84

Calculating Internal Transmission Gear Ratios

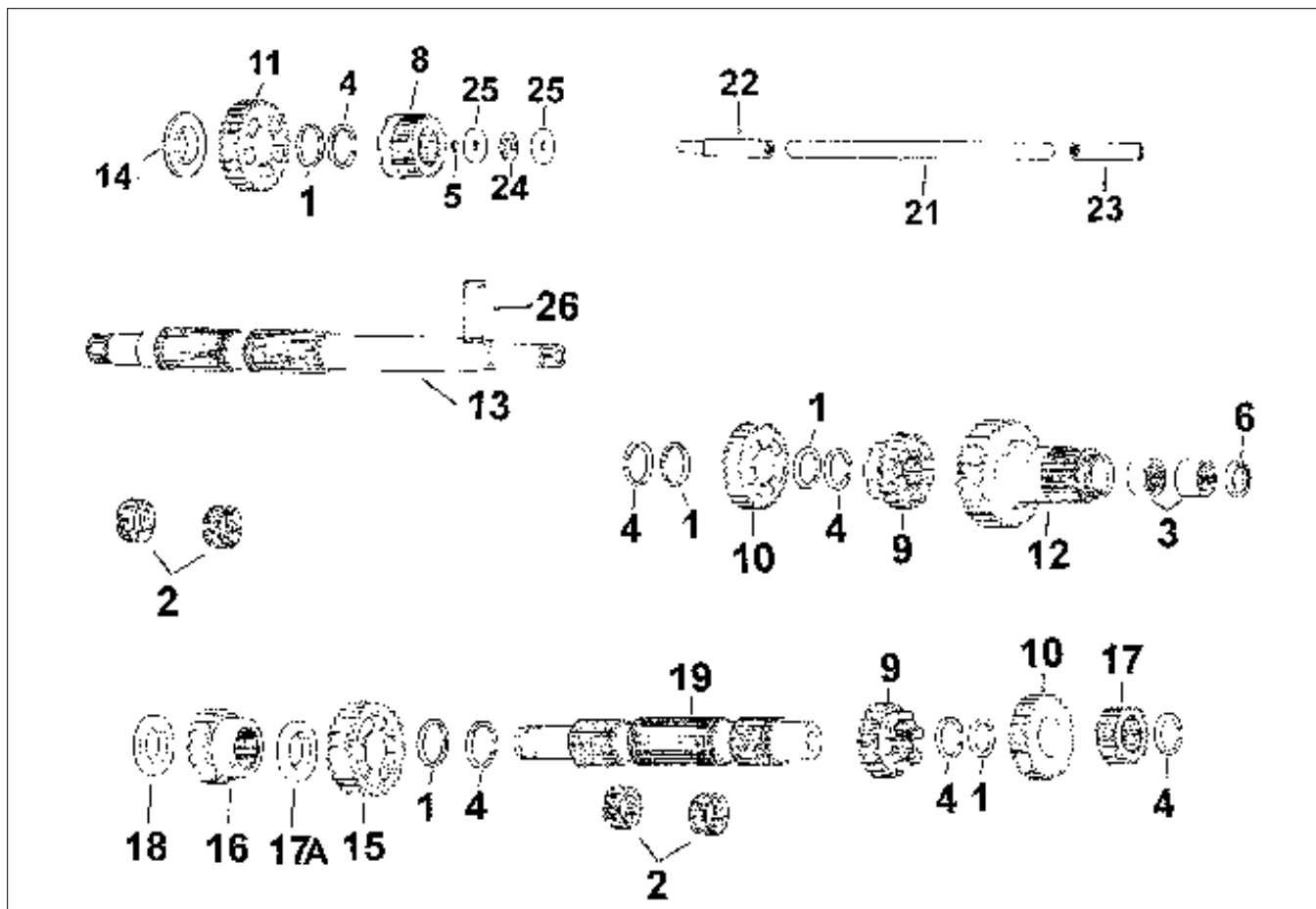
Since we get many questions regarding transmission gear ratios, a table of values for EV-80 transmissions is shown below along with an explanation of how the actual numbers are determined. The internal ratio (in any gear) is a combination of the speed gear ratio and the main drive gear ratio. The numbers below are the numbers of teeth on each matching pair of gears.

Gear	Main Drive	Speed Gear	Overall Ratio	5 RPM Drop	MPH per 1000 RPM
1 Stk	32/17	31/18	3.24	32	6.81
1 Close	32/17	25/16	2.94	25	7.50
2	32/17	27/23	2.21	27	9.99
3	32/17	23/27	1.60	23	13.79
4	32/17	19/29	1.23	19	17.94
5	32/17	Direct drive	1.00	---	22.07

To calculate the internal gear ratio in 2nd gear for example, multiply 32/17 by 27/23= 32/17 x 27/23= 2.21

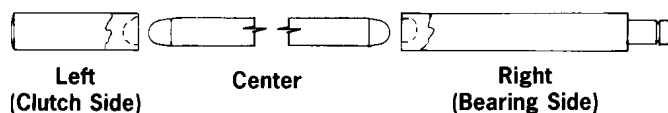
To calculate mph per 1000 engine RPM: (assuming a 25" diameter rear wheel and a stock 3.37 final drive ratio);
(25 x 3.14159) / 12 x (1000 / (3.37 x 60)) x (3.0 / 4.4)= 22.07 mph per 1000 engine RPM (in 5th gear)

To calculate MPH per 1000 engine RPM in 3rd gear: Divide 22.07 by 1.60
(22.07 / 1.60)= 13.8 mph per 1000 engine RPM (in 3rd gear)



Big Twin Shovel 1980-84 5 Speed

#	PCP	OEM	Description	#	PCP	OEM	Description
1	18000	6003	Thrust washer (5 pk)	14	11515	35064-79	Spacer, mainshaft
2	15600	8876A	Bearing	15	36017	35622-79C	1st Gear countershaft
3	15602	8904	5th Gear bearing 1980-90	16	36018	35625-79	4th Gear C/S
4	11031	11067	Retaining ring (10 pk)		296440		Andrews, as above
5	11034	11096	Retaining ring (10 pk)	17	36020	35626-79B	5th Gear C/S
6	14011	12013A	Oil seal 1980-90 (5 pk)		296555		Andrews, as above
	79060		As above, James (5 pk)	17A	11517	35628-79	Spacer 1980-86 only
8	36003	35025-79B	1st Gear mainshaft 1979-95	18	11516	35629-79	Spacer
	296125		Andrews, as above	19	36022	35632-79	Countershaft
9	296220	35026-79A	M/S 2nd, C/S 3rd, Andrews	21	16544	37088-79	Center clutch rod
10	296330	35027-79A	M/S 3rd, C/S 2nd, Andrews	22	16543	37089-79	End, pushrod R/S
11	36008	35028-79B	4th Gear M/S	23	16545	37090-79	End, pushrod L/S
	296445		As above, Andrews	24	15618	37312-75	Bearing
12	296550	35029-79	5th Gear M/S, Andrews	25	11518	37313-80	Thrust washer (5 pack)
13	36183	35042-79	1980-84 Chain drive	26	10314	37523-15	Key m/s (10 pack)



Clutch Pushrods for Late Model Big Twins

Preston 3-piece clutch pushrods to fit all 5-speed models 1980-on and 4-speed models (with diaphragm clutch) from L1984-86. Each piece is heat-treated where necessary. Sold each and in kits

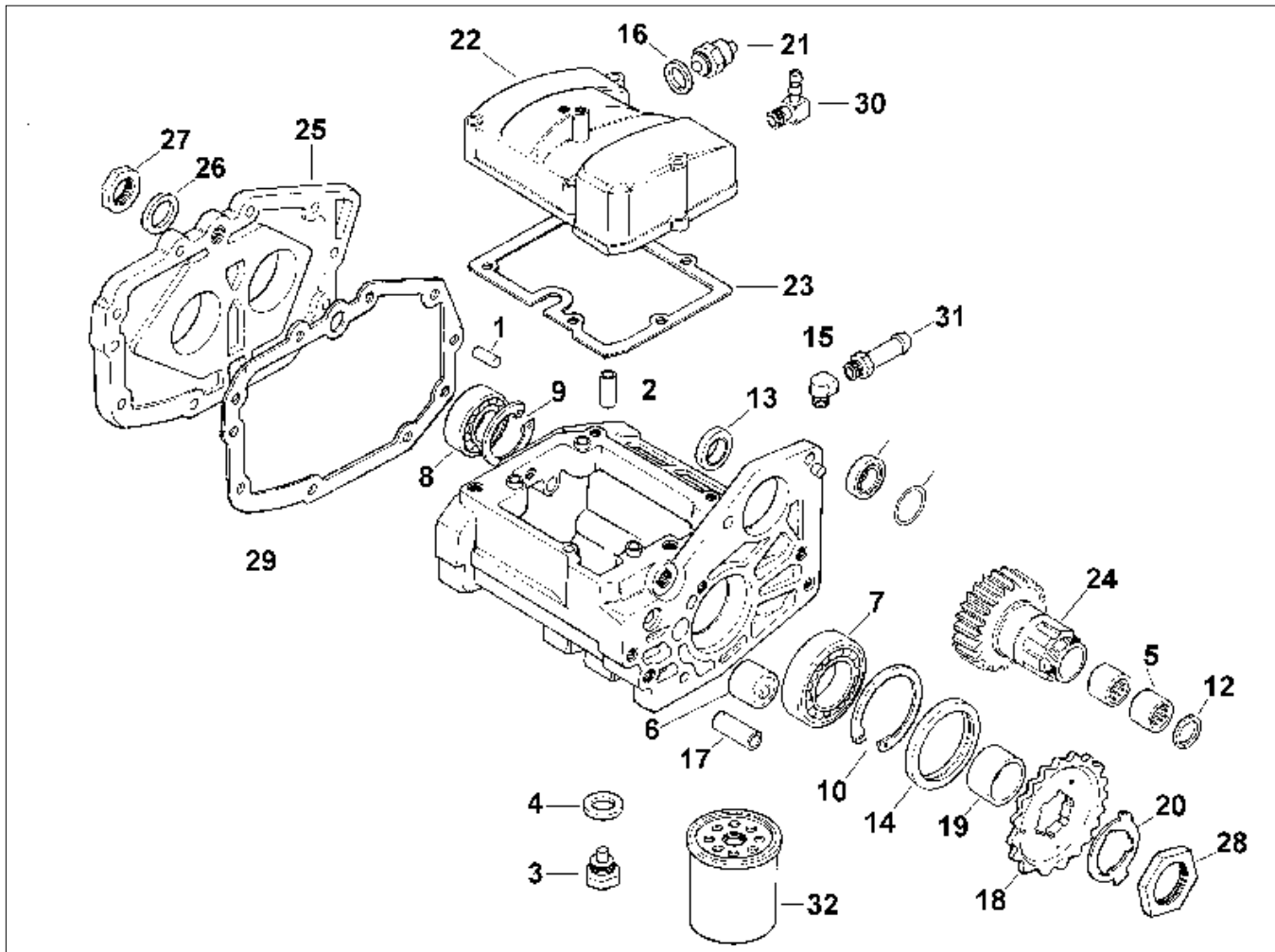
All 1980-E84 5-speed models

PCP	Description
16543	Right end (37089-79)
16544	Centre piece (37088-79)
16545	Left end (37090-79)
16552	Kit

Bearing Retaining Clip

11034 Fits all Big Twins L1975-on (11096) (10 Pack)

BT Housing 1980-86



Transmission 5 Speed Housing 1980-86

Sold each unless package quantity noted.

#	PCP	OEM	Description	#	PCP	OEM	Description
1	10113	375	Dowel pin (10 pk)	15	10520	26338-68	Fitting, oil filter hose 80-84 (5 pk)
2	10119	609	Pin 1979-90 (10 pk)	16	79310	33043-80	Gasket, neutral switch,80-on all(10
3	10616	722A	Magnetic drain plug	17	11537	33114-79	Spacer
4	16300	6007	Nylon washer (10 pk)	18	2489	33337-83	23T Sprocket 80-85
5	15602	8904	Needle bearing main gear 1980-86		2490		24T Sprocket
6	15605	8977	Needle bearing 1980-E84		2491		25T Sprocket
7	15706	8978	Ball bearing 80-E84	19	31091	33334-79	Spacer, sprocket 80-84 (Jims)
8	15708	8998	Ball bearing	20	13717	33335-79	Lockwasher, sprocket 80-83 (5 pk)
9	11014	11020	Retaining ring (10 pk)	21	289	33900-59	Neutral switch
10	11028	11057	Retaining ring 80-E84	22	4340	34466-82	Chrome upper cover 82-86
11	14527	11162	O-ring m/shaft right side 1982-84 (10)	23	79335	34904-79	Gasket, upper cover 79-85 (10 pk)
12	N/A			24	296550	35029-79	Andrews main gear 1980-E84
13	14017	12043	Seal, starter shaft 1980-86 (5)	26	11539	35076-79	Spacer (10 pk)
	79073	12043	As above, James 1980-86 (5 pk)	27	12553	35078-79	Nut, mainshaft & countershaft (pr)
14	14018	12044A	Oil seal mainshaft 80-E84	28	12554	35211-36	Nut, sprocket
	79075	12044-A	As above, James (each)	29	79355	35652-79	James bearing housing gask (10)
				30	10521	62375-57	Fitting, upper cover 82-on
				31	10575	63533-41	Fitting, oil filter hose (5 pk)
				32	2500	63796-77	Chrome oil filter
					3841	63805-80	Black oil filter

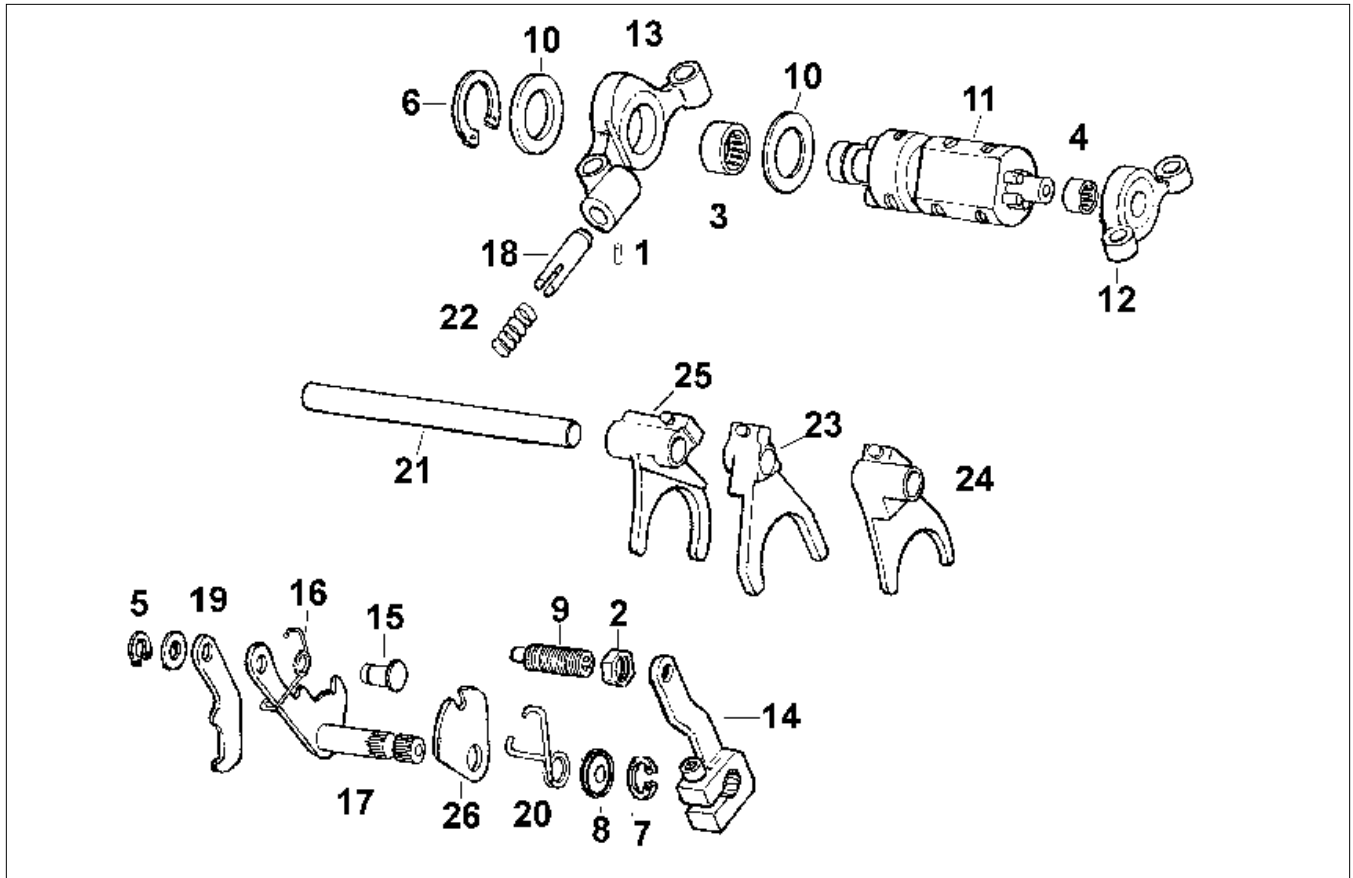
5th Mainshaft Gear 1979-84

USA gear fits 1979-84 5 speeds.

36010 35029-79



BT Shifter 1980-on



Big Twin 5 Speed Gear Shifter 1980-on

Sold each unless package quantity noted.

#	PCP	OEM	Description	#	PCP	OEM	Description
1	10103	601	Roll pin (10 pk)	11	37101	33320-79D	Shifter cam 1980-97
2	12501	7515	Jam nut (10 pk)	12	37106	33326-79A	Support, left shifter cam
3	15627	9114	Needle bearing		31045		As above billet, Jims
4	15628	9115	Needle bearing	13	37112	33332-79	Support, right shifter cam
5	11011	11016	Retaining ring (10 pk)	14	36131	33715-85A	Lever, shifter rod 1985-99
6	11032	11083	Retaining ring (10 pk)	15	10136	34082-79	Pin, shifter shaft lever
7	11036	11150	Retaining ring (10 pk)	16	13179	34083-79	Spring, shifter shaft lever
8	14019	12045	Seal (5 pk)	18	37115	34085-79A	Cam follower
9	37150	33119-79B	Adjusting screw, shifter arm	19	37117	34086-79	Pawl, shifter cam
10	11580	33205-80	Thrust washer .017 (5 pk)	20	13180	34087-79A	Spring, shifter shaft
	11581	33206-80	As above, .020 (5 pk)	21	36136	34088-79	Shaft, shifter fork 1979-86
	11582	33207-80	As above, .022 (5 pk)	22	13181	34089-79	Spring (5 pk)
	11583	33208-80	As above, .025 (5 pk)	23	37151	34191-79E	Shifter fork
	11584	33209-80	As above, .028 (5 pk)	24	37152	34193-79E	Shifter fork
	11585	33210-80	As above, .031 (5 pk)	25	37153	34195-79D	Shifter fork
	11586	33211-80	As above, .035 (5 pk)	26	37118	35068-79	Plate
	11587	33212-80	As above, .039 (5 pk)				
	11588		Assortment of 8 pcs.				



37155

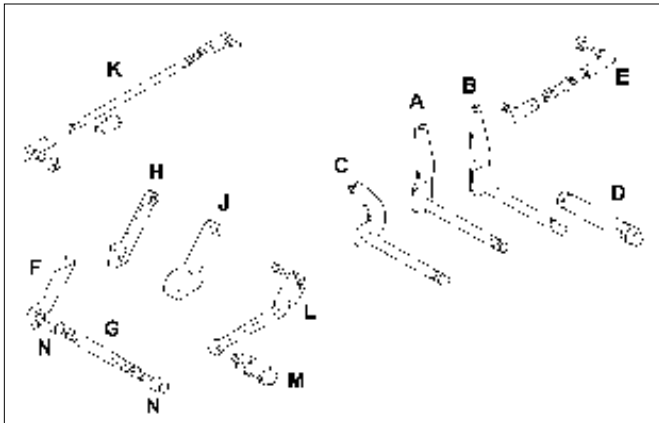
5 Speed BT Trans Shift Pawl Assembly

This kit includes plate (35068-79), spring (34087-79), pawl plate (34086-79), shifter shaft (34084-86), spring (34083-79), pin (34082-79), washer (6016) and retaining ring (11016).

37155 Preston (34084-86)

37156 Sifton as above

Big Twin 5-Speed



Inner Shifter Levers

These are splined and fit through the primary cover on 1974-84 FX 4-speed, 1982-88 FXR models, 1980 FLT models have linkage on front primary cover.

PCP	OEM	#	Year/Model	Item
3092	34574-74	A	74-E79 FX-FXE	Lever, chrome
4578	34574-79	B	79-84 FX-FXE	Lever, zinc
36134	33728-82A	E	1982-94 FXR	Ball joint, zinc
37215		E	1982-94 FXR	Left hand end Lever
59609	34621-82	C	1982-84 FXR	Lever
36132	33718-82	F	1982-08 FLT	Lever, chrome
36130	33709-82	G	1982-08 FLT	Shaft only
36133	33719-79A	K	1980-on FLT	Chr rod kit w/ends
1147	34611-65	M	All	Black shift rubber



FXR Chrome Shift Rod Kit 1982-94

PCP	Description
36134	Complete kit
37215	Left hand end only



Chrome Shift Rod Kit FXR 1982-94

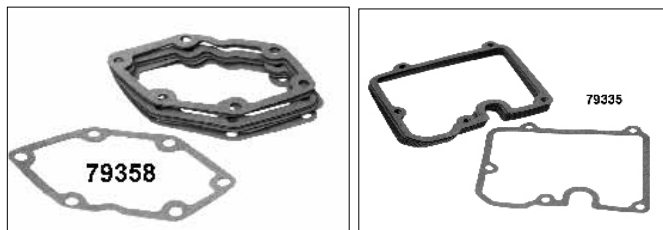
37213



James 5-Spd Trans Gasket Kit

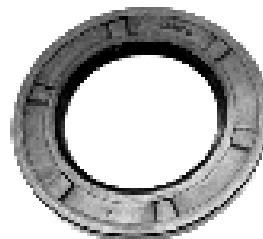
Kit includes double lip oil seals, early and late clutch cover gaskets, top cover gaskets, and bearing end cover gaskets.

PCP	Application
79706	1980-99 BT 5-spd (33031-85)



James Trans Gaskets

PCP	Application
79324	Top cover FL L1979-86 4 speed (34824-79) (10 pk)
79335	FLT, FXR 1979-85 (34904-79) (10 pk)
79358	FLT, FXR, FXRS 1979-86 (36801-79) (10 pk)



Trans Oil Seal

James	PCP	Application
79061	14012	FL, FLH, FLT, FX, FXR 65-90 (12014) (5 pk)
79067	-	FLT, FXR (12026-B) (5 pk)
79073	14017	FLT, FXR, FXRS 1980-86 (12043) (5 pk)
79074	-	FLT, FXR, FXRS 1980-86 (12043-A) (5 pk)
79077	14019	FLT, FXR, 1980-on (12045-DL) (5 pk)

BT 5 Speed Trans

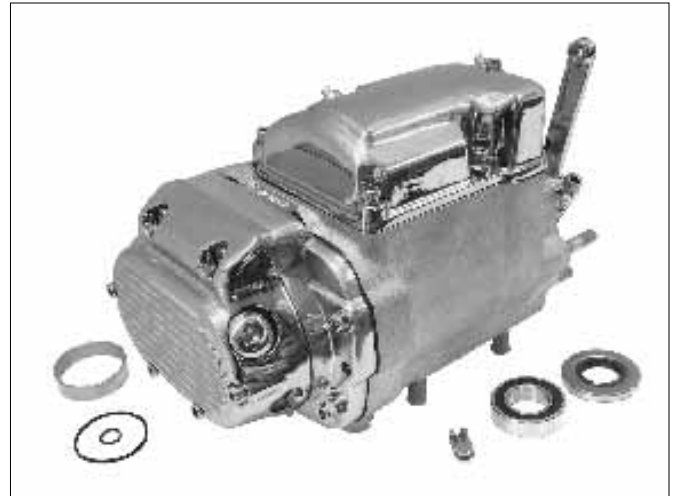


5 Speed Transmission Case for 4 Speed BT

S&S cases is CNC machined from 356-T6 aluminum. The 4 to 5 speed case is designed for 4 speed BT frames with 1970-84 shovelhead style drivelines and chain final drives. Basic case assembly includes the transmission case and shift lever adjustment screw, shifter shaft guide, and all studs and dowel pins required for assembly.

PCP Description

- | | |
|---------------|-----------------------------|
| 561051 | Basic case assembly kit |
| 561038 | Case with bearing and seals |



5 Speed Transmission

Direct bolt-in replacement of the 4 speed unit on 1970-84 models. Completely assembled using replica gears, shaft and transmission case. All internal parts interchange with stock 5 speed components. Use 1980-84 FXR 5 speed transmission sprocket with offset so teeth are closer to trans case. Inner primary must be clearanced for final fitting. Available with late clutch release mechanism for 1987-on type cable.

58091

BT 5-Speed Parts



45507

Chrome 5-Speed End Cover (Clutch Release)

Order Screw Kits separately.

PCP Year
45507 1980-86 all (37104-84)

5-Speed Transmission Chrome Screw Kits, Side Cover

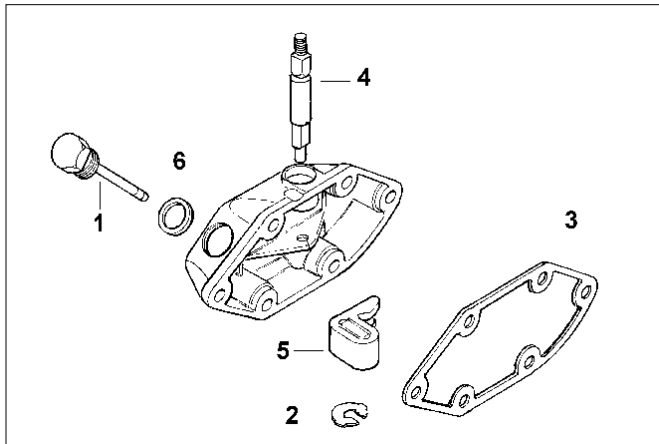
PCP	Year	Type
1768	1980-86	Acorn
2894	1980-86	Cap
8908	1980-86	Allen



5 Speed Transmission Top Cover (No Screws)

Smooth style, chromed transmission top cover and gasket for all 1982-86 5 speed BT.

4340 1982-86 (34462-79A,34462-82)



Big Twin Clutch Release 1980-86

Quality release parts for all Big Twin's 1980-86 5 speeds.

PCP	Fits
1 2865	Chrome trans dipstick
5393	As above, cap style
2 11013	Retaining ring (11019) (10 pk)
3 79358	James cover gasket (36801-79) (10 pk)
4 36127	Clutch release shaft (37083-80)
5 36126	Clutch release finger (37084-79)
6 79362	Dipstick washer (37091-80) (10 pk)



Transmission Chrome Allen Screw Kit

8905 4 Speed FX, FL 1980-86



5-Speed Clutch Release Lever Set

Chrome plated clutch release lever set for all 5-speeds 1980-86. This kit replaces the 4 separate OEM clutch release arms used since 1980. Replaces the stock release arm and cable bracket with a stronger forged release arm and die cast tranny top cable bracket.

PCP	Description
2409	Set (37085-80, 37094-82, 37096-83 & 37096-85)
36126	Release finger (37084-79)
11013	Shaft snap ring (11019)
36127	Finger shaft (37083-80A)
18709	Bushing (37102-84)

Transmission Dip Sticks

Big Twin, chrome plated, dipsticks have allen style heads, that allow for checking of fluid level without removing cap.

PCP	Model
77008	4 Speed 1936-64

Jim's 5 Speed



Jims 5 Speed BT Polished Trap Door
31395 (Jims 2347-7)



Complete 5 Speed Big Twin Gear Sets 1980-84

Gear sets for 5 speed transmissions includes all gears and shafts. Available with close ratio first gears. These are the same precision gears used in JIMS complete transmissions and super kits.

31331 Close ratio



Jims "Timesaver" Master Kits

BT 5 speed Jims transmission parts plus James gaskets.
31274 BT E1980-E84



Jims 4 Speed BT Mainshaft

Precision machined mainshaft for Big Twin 4 speeds 1970-E84.

31300

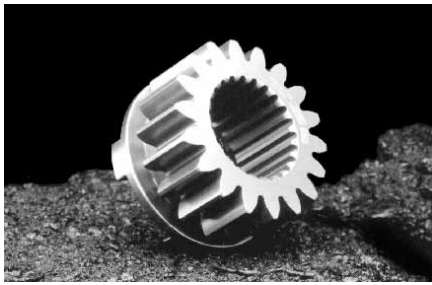


Jims Solid Billet Pillow Block

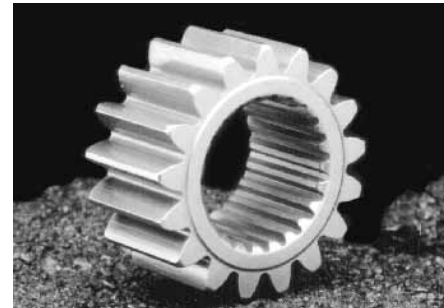
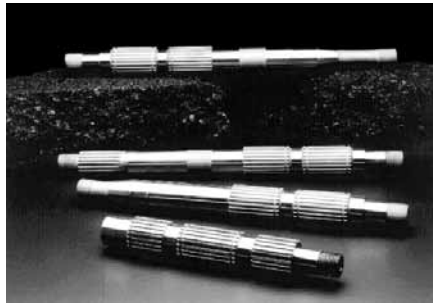
Pillow block includes bearing and is stronger than stock. Designed for extreme shifting in 5 speed transmissions or with back cut, super quick shifting gears. Kit replaces 33326-79A Good for 6 speeds.

31045 For 1979-00 5 speed trans

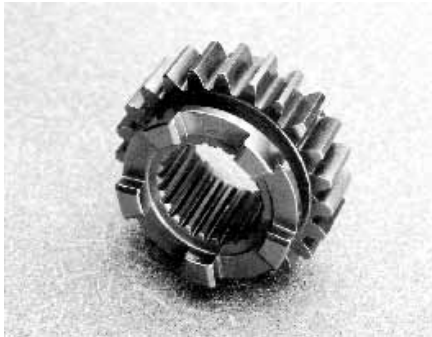
Jim's 5 Speed



31316



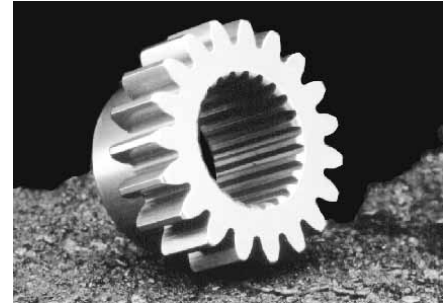
31321



31319



31317



31320

Jim's BT 5 Speed Transmission Parts

Jim's Machining uses aerospace quality steel. These precision parts are made by the same "A Cut Above" team that produces exceptional motor parts, shafts and bushings. Fully interchangeable with OEM parts.

PCP	Jims	Use
31316	35025-79B	1st Gear mainshaft, mate with 35622-79B
31319	35026-79C	2nd Gear mainshaft, 3rd countershaft, mate with 35027-79B
31322	35027-79B	3rd Gear mainshaft, 2nd gear countershaft (use 2 per transmission), mate with 35026-79A
31323	35028-79B	4th Gear mainshaft, mate with 35025-79B

Mainshafts

31326	35042-79	1980-84 Mainshaft, bearing diameter 1.000"
31329	35632-79	1980-on Countershaft
31317	35622-79C	1st Gear countershaft, mate with 35025-79B.
31320	35625-79B	4th Gear countershaft, mate with 35028-79B
31321	35626-79B	5th Gear countershaft, mate with 35028-79

Close Ratio Gear Set

31318	2220	1st Gear close ratio set, makes 1st gear higher for lighter bikes and high performance motors. More MPH in 1st gear.
-------	------	--

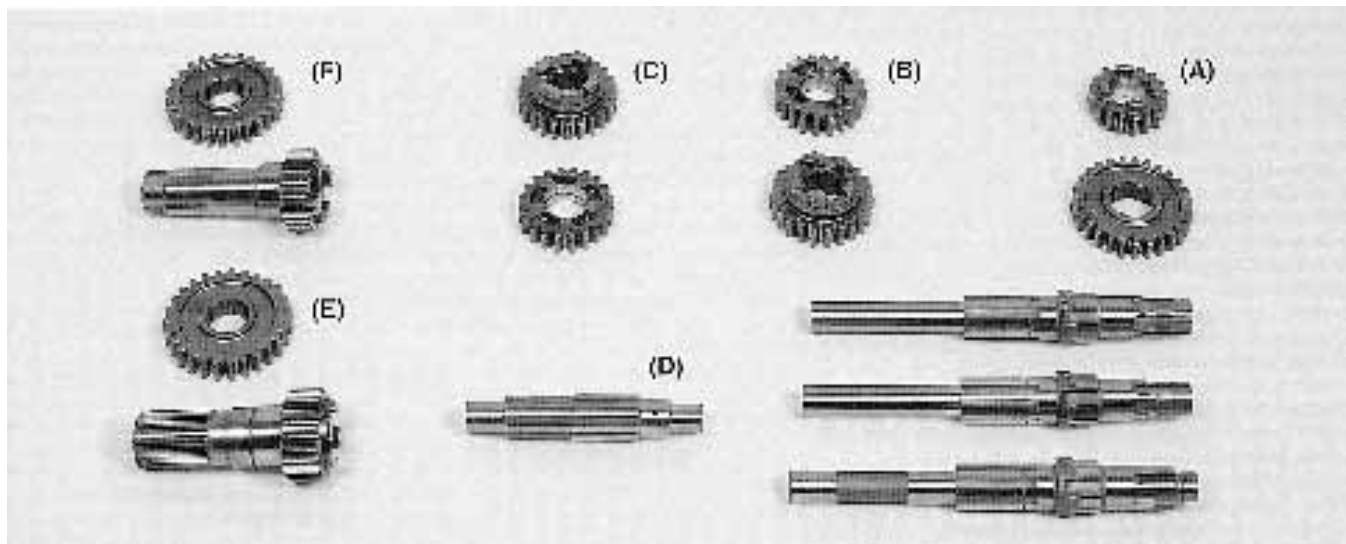


31322



31323

Andrews XL 4-Speed



XL 4 Speed Transmission Gears

Most of the gears listed on these 2 pages will fit XL 4 speed transmissions 1956-90. All Andrews XL gears are made from high nickel alloy steel which is heat treated and shot peened for maximum durability. With proper shot peening, the wear resistance of drive edges and slots is greatly improved. All XL gear boxes run better with Andrews gears.

(A) Stock 1st Gears

- 251050** Main 1st 27T (35277-52A)
- 251060** Counter 1st 17T 1973-85 (35760-73)

(E) Alternator "C" Gear Set

- This gear set fits all 1984 alternator engines.
- 254850** Mid 1984-on

Wide Ratio 1st Gear Sets

Changes 1st from 2.52 ratio to 2.68 for more low end torque with 21T or 22T trans sprockets.

- 251010** 1973-85.

(F) Late "C" Gear Sets

- Set includes 18T clutch gear and 26T counter gear.
- 254720** 1971-78
- 254740** 1979-mid 1984
- 254700** 1967-69 Electric start and all 1970

(B) Stock 2nd Gears

- 252020** 2nd main 23T (35296-56, 35296-56A)
- 252040** 2nd counter 20T (35750-58, 35750-58A)

Stock Main Drive and Countershaft Gear

- (17T & 27T) Not pictured, similar to F in picture.
- 254710** Clutch gear 1971-78 (37448-71)
- 254730** Clutch gear 1979-mid '84 (37448-79)
- 255580** Countershaft gear 27T (35695-58)

(C) Stock 3rd Gears

- 253050** 3rd main 20T (35305-56, 35305-56A)
- 253030** 3rd counter 23T (35709-54A, 35709-54B)

Complete Gear Set

- 250100** 1973-78 Includes "W" 1st and stock 4th
- 250200** 1973-78 Includes "W" 1st and "C" 4th
- 250300** 1973-78 Includes stock 1st and stock 4th
- 250400** 1973-78 Includes stock 1st and "C" 4th
- 250101** 1979-84 Includes "W" 1st and stock 4th

(D) Transmission Shafts

Replacement transmission shafts for standard HD part numbers. Shafts are made of a super alloy material for maximum strength and durability on this critical part.

- 259010** Countershaft 1956-mid 84 (35613-58)
- 258080** Mainshaft 1956-69 kickstart (35044-56)
- 258120** Mainshaft 1971-mid 84 (solid shaft, no through hole) (35046-71)
- 258190** Mainshaft mid'84-90 (solid shaft, no through hole) (35036-84A)

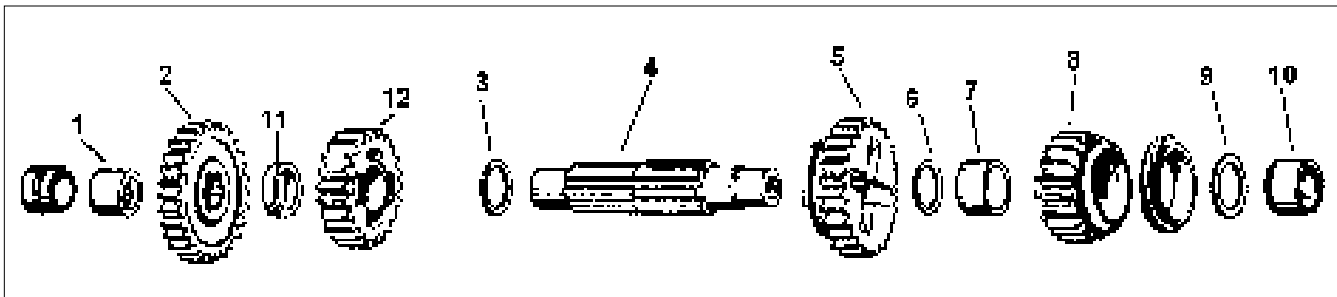
XL 4 Speed Main Drive Sets

"C" ratio main drive gears will provide true close ratio shifting on a 4 speed XL. All gear ratios are listed for comparison.

	Stock ratios	"W" Ratios (1)	"W" Ratios (2)	"C" Ratios
1st	2.52	2.68	2.44	2.29
2nd	1.83	1.83	1.66	1.66
3rd	1.38	1.38	1.26	1.26
4th	1.00	1.00	1.00	1.00

- (1) "W" ratio 1st plus stock main drive (27/17 teeth)
- (2) "W" ratio 1st plus "C" ratio main drive (26/18 teeth)

XL Countershaft 4-Speed



Sportster 1954-on 4-Speed (Sold in 5 packs unless noted)

#	PCP	OEM	Description	#	PCP	OEM	Description
1	15617	35961-52	Needle bearing 1954-on. (each)	9	11630	35818-72	R/S washer 1954-85 .020 (5 pk)
2	3427	35695-58	Drive gear 27 tooth 1958-86 (ea)	11631	35327-73		As above .025
3	11624	35841-58	2nd gear washer 1958-90 (5 pk)	11632	35819-72		As above .030
4	2394	35613-58	Countershaft 1958-E84 (each)	11633	35328-73		As above .035
5	3432	35709-54B	3rd gear 23 tooth 1954-90 (each)	11634	35821-72		As above .040
6	11625	35836-55	L/S low gear washer .075 55-83 (5)	11635	35329-73		As above .045
	11626	35838-55	As above .085 (5 pk)	11636	35820-52		As above .050
	11627	35839-55	As above .100 (5 pk)	11637	35821-52		As above .055
	11628	35840-52	As above .065 1954-83	11638	35824-52		As above .060
7	18562	35787-52	Low gear bushing 1952-72 (ea)	11639	35825-52		As above .065
8	N/A	35760-54B	Low gear 17 tooth 1957-72 (ea)	11640	35828-52		As above .070
	3430	35760-73	Low gear 17 tooth 1973-E84 (ea)	11641	35829-52		As above .075
				11642			Set (1 each of above)
				10	15616	35960-54	R/S needle bearing 1954-90. Closed End (ea)
				11	11643	35809-58	Spacer 1958-90 (ea)
				12	38100	35750-58A	Countershaft 2nd 20T 1958-90



Thrust Washer Set

Countershaft low gear. Set includes 12 washers sizes .020, .025, .030, .035, .040, .045, .050, .055, .060, .065, .070, .075. fits all 1954-on XL's. Complete set.

11642



Andrews 26 Tooth C/S "C" Gear XL 1971-78
255620

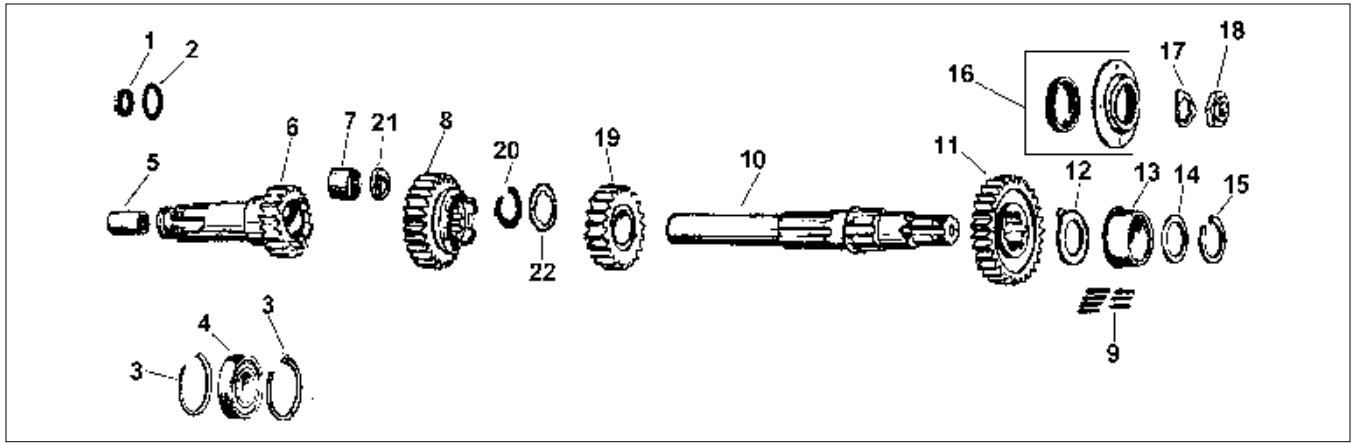


Thrust Washer Set

Countershaft low gear, left side. Set contains 4 washers. One of each size .065, .075, .085 and .100". Fits all 1954-on XL's. Complete set.

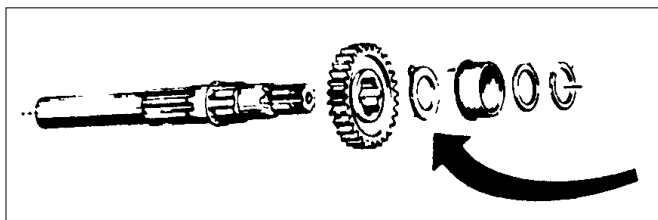
11629

XL 4-Speed Main Shaft



Sportster, 4-Speed 1954-on

#	PCP	OEM	Fits	#	PCP	OEM	Description
1	14014	12021	Clutch gear oil seal. XLH 1967-70, XLCH 1970 (each)	12	11600	35343-73	R/S thrust washer .030 54-83 (5 pk)
	14052	37531-56B	As above KH, XL, XLH 1956-66, XLCH 1957-69 (each)		11601	35344-73	As above .040
2	14504	11103	Clutch gear O-Ring XL, XLH '57-66, XLCH 1957-69 (10 pk)		11602	35349-52	As above .050
3	11064	35112-52	Bearing snap ring 1954-83 (pair)		11603	35350-52	As above .055
4	15716	9025A	Ball bearing 1954-90		11604	35351-52	As above .060
5	18569	37458-52	Clutch gear bushing 1952-83 (each)		11605	35352-52	As above .065
6	3425	37449-56	Clutch gear 17T KH, XL, XLH '56-66, XLCH 1956-69		11606	35353-52	As above .070
	3428	37448-67	As above XLH 1957-70, XLCH 1970		11607	35354-52	As above .075
	3431	37448-71	Clutch gear 17T XL, XLS 1971-E79		11608	35326-73	As above .080
	3434	37448-79	Clutch gear XL, XLS, XLX L79-E84		11609	35355-72	As above .085
7	15617	35961-52	Needle bearing 1954-on		11610	35381-84	As above .090
8	3438	35296-56	2nd gear 23 tooth 1956-85		11611	35357-82	As above .098
9	1061	9095	Roller Set STD (23) 1954-on		11612	35358-82	As above .107
	1062	9096	As above +.0004		11613	35359-82	As above .116
	1063	9097	As above +.0008		11614	35360-82	As above .125
10	2376	35044-56	Mainshaft 1956-69		11615		M/S washer set (1 each of above)
	2377	35046-67	Mainshaft 1967-70	13	31082	35105-52	Bearing race STD 1954-83
	2378	35046-71A	Mainshaft 1971-E84		3953	35105-52	As above +.002
	5768	35036-84A	Mainshaft L84-90 XL's		3954	35105-52	As above +.005
11	3433	35277-52A	M/S low gear 27 tooth 1954-85		3955	35105-52	As above +.010
				14	11616	35363-52	Bearing washer 1954-83 (5 pk)
				15	11066	35113-52	Retaining ring 1954-83 (5 pk)
				16	3822	35150-52	Oil seal and retainer 1952-84
				17	13725	35050-52	Lock washer 1952-80 (5 pk)
				18	12551	35047-53	Drive sprocket nut 1953-70 (each)
					12552	35047-71A	As above 1971-86
				19	1245	35305-56A	3rd Gear 1956-85
				20	11070	35337-56	3rd Gear retaining ring 56-90 (5 pk)
				21	11665	35361-56	Thrust washer M/S L/S 1956-79 (ea)
					11666	35216-79	As above .212 L79-90
				22	11667	35364-56	3rd Gear washer 1956-85 (5 Pk)



XL Trans Thrust Washer Set

Fits right side 1954-E84 XL-15 sizes, 1 of each.
35326-.030-.125.
11615



Trans Main Shaft Right Side Spacers 1984-90 4-Speed

Sportster
Sold 5 packs

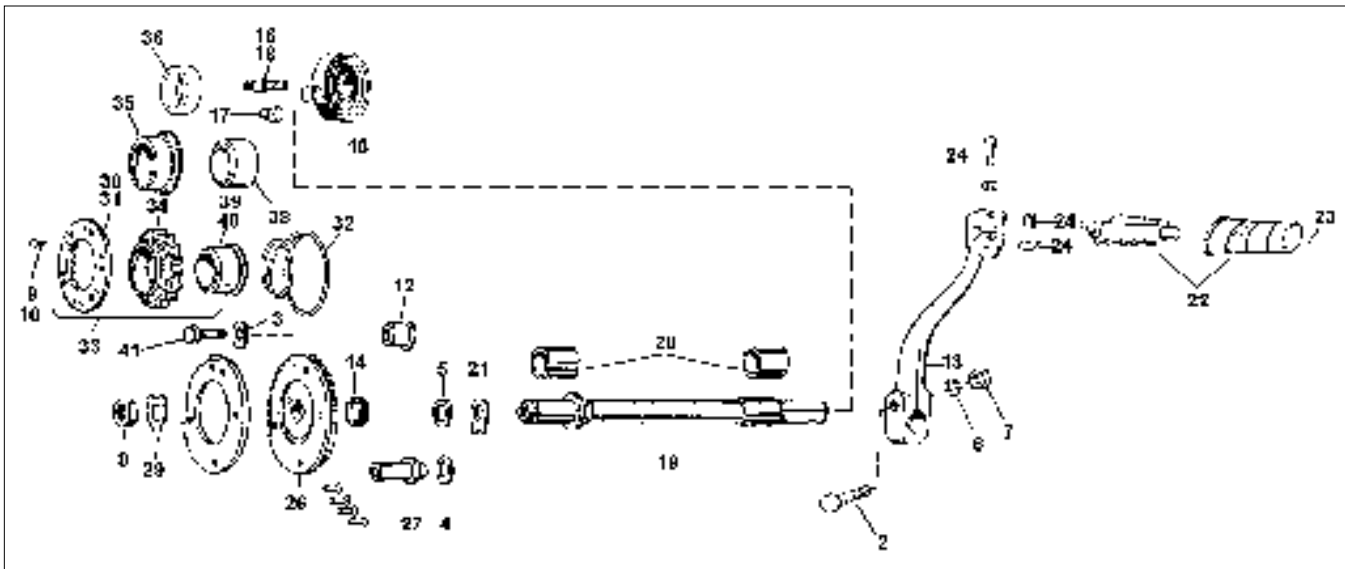
PCP	OEM	Size
11617	35385-84	.067
11618	35384-84	.072
11619	35383-84	.079
11620	35382-84	.084
11621	35381-84	.090
11622	35380-84	.096
11623		Set of 1 each of above sizes



James Transmission Sprocket Shaft Seal

79079 XL 1986-90 4 speeds (12049DL) (5 pk)

Sportster Kicker

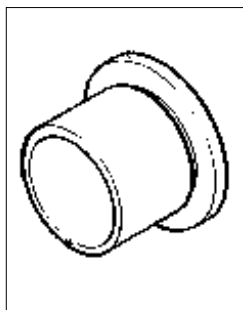


Kick Start Hardware 1954-79 Sportster

#	PCP	OEM	Item	Years	U/M	#	PCP	OEM	Item	Years	U/M
5	13563	6802	.007 Shim	All	10pk	26	2365	33348-57	Large kick gear	1957-70	Each
8	12516	7926	Shaft nut	All	Each		2366	33348-77	Large kick gear	1978-79	Each
9	10000	8215	Rivet	1957-70	25pk	27	36200	33356-52	Gear stop	1952-79	Each
10	10001	8216	Rivet	1971-79	25pk	29	13718	33362-52	Lock tab	1957-81	5 Pk
12	10603	24577-68	Hole plug	1968-on	Each	30	2374	33379-57	Ratchet plate 9T	1957-70	Each
13	715	33057-72	Kick arm	All	Each		1513	As Above	18 Tooth	1957-70	Each
14	14038	33076-37	Oil seal	All	5 pk	31	2375	33379-71A	Ratchet plate 9T	1971-79	Each
15	13167	33084-41	Chrome spring	All	Each	32	13173	33391-52	Ratchet spring	1952-79	Each
16	4481	33088-52	Spring stud chr.	1952-70	Each	33	2166	Cpt. Kit	Ratchet gear kit	1954-70	Kit
18	4637	33088-71	Spring stud chr.	1971-79	Each		2167	Cpt. Kit	Ratchet gear kit	1971-72	Kit
19	1051	33094-57	Kicker shaft	1957-76	Each		2168	Cpt. Kit	Ratchet gear kit	1973-79	Kit
	2363	33094-77A	Kicker shaft	1977-79	Each	34	3423	33432-57	Ratchet gear 9T	1957-72	Each
20	18539	33099-52A	Bushing, shaft	1954-85	Pr.		1515	As Above	18 Tooth	1957-72	Each
	31384		Jims, as above		Each	34	2372	33432-73	Ratchet gear 9T	1973-79	Each
21	2364	33110-54	Thrust plate	All	5 pk	35	18545	33442-57	Bushing	1957-E73	Each
22	714	33175-16B	Kick pedal	All	Each		31389		Jims, as above		
23	2584	33182-63	Black rubber	All	Each	36	18546	33442-73	Bushing	L73-81	Each
24	1148	33213-31	Bushing	All	Kit		31390		Jims, as above		
		33215-30	Spring washer	All	Kit	38	2370*	37753-76	Spacer XLH	1967-79	Each
						39	2371*	37754-74	Spacer 1.047 L	1957-72	Each
						40	2373	37755-73	Spacer 1.153"	1973-79	Each

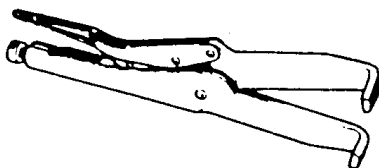
Spacer, Clutch Sprocket

Replaces OEM 37754-74. 1.047 long x 1.3715 O.D. Use on all 1957-72 XL's.
2371



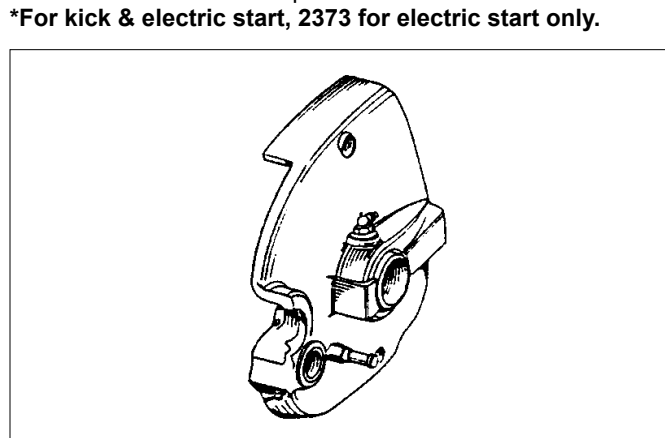
Spacer Clutch Sprocket

Replaces OEM 37755-73. 1.153 long x 1.3715 O.D. Use on all 1973-79 XLCH's only.
2373



Clutch Holding Tool

Used when applying nut torque during reassembly. Tool is used to prevent rotation of clutch shells and final drive sprockets. Used for pre early 1984 XL's with wet clutch models. Replaces 91042.
26022



Cast Sprocket Cover XLCH

Fits XLCH 1952-67, features early style rib design and includes worm and hardware.

PCP	Description
45522	Cast cover (34874-52A)
8884	Chrome cover bolts XL 1954-70
8886	As above, XL 1954-70 with exhaust clamp mount

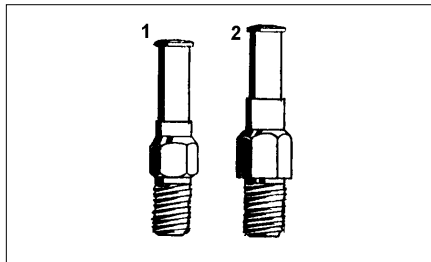
XL Sprocket Covers



Sportster 1971-76

Replaces 34871-71. Features starter motor cut out but fits both kick and electric models.

- 45516** Polished
- 45517** Chrome



XL and 45" Studs

- | PCP | Description |
|-------------|---------------------------------------|
| 9756 | (1) Parkerized 45" 1941-63 (33088-41) |
| 9755 | As above, cadmium |
| 9754 | As above, chrome |
| 4637 | Chrome XL 1971-79 (33088-71) |
| 4481 | (2) Chrome XL 1952-70 (33088-52) |



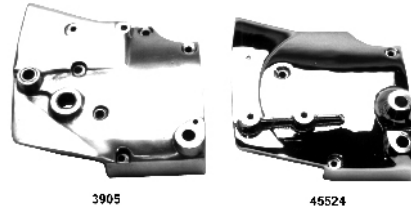
XL Chrome Cover Screws

- | Acorn | Cap | Allen | |
|-------------|-------------|-------------|---------|
| 1696 | - | - | 1957-70 |
| 1729 | 2891 | 5375 | 1971-76 |
| | 2892 | 5377 | 1977-85 |



Release Worm Gear and Lever Kit

- 1398** 1954-70 (37201-54)



1979-80 Sprocket Covers

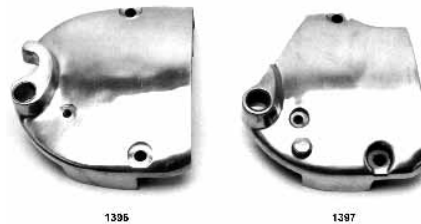
- | PCP | Item |
|--------------|--------------------------|
| 3905* | Polished 1979 (34888-79) |
| 3908 | Polished 1980 (34911-80) |
| 45524 | Chrome 1980 (34911-80) |

*For kick & electric start



Sportster 1977-78

- | PCP | Application |
|--------------|--|
| 45518 | Kick start polished (34850-77) |
| 45519 | As above, chrome |
| 45520 | Kick start & electric start polished (34870-75A) |
| 45521 | As above, chrome |



Sportster 1971-76 Reinforced

- Extra thick, heavy-duty in cast aluminum.
- 1396** Kick only, polished (34871-71)
 - 45513** Kick, chromed
 - 1397** Kick and electric, polished (34870-71)



Oil Seal and Retainer Kit XL 1952-E84

Metal retainer with seal, gasket and screws. Fits all XL 1952-E84 models.

- | PCP | Item |
|--------------|----------------------------|
| 15953 | Complete kit (35150-52) |
| 14041 | Seal only (35151-52) (5pk) |



Sportster 1981-on

Die-cast OEM type quality covers.

- | PCP | Item |
|--------------|-------------------------------|
| 45525 | Polished 1981-85 (34911-81) |
| 45526 | Chrome 1981-85 (34911-81) |
| 10908 | Pivot stud 1980-90 (42441-80) |
| 27013 | Bracket 1983-90 (34909-83) |



Sportster 1952-70 Kickstart

Cover replaces 34782-57A and includes PCP# 1398 worm gear kit. Fits 1952-70 XLCH and 1952-66 XLH.

- 45514** Polished
- 45515** Chrome

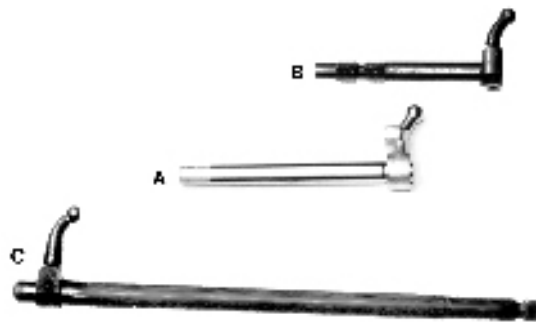
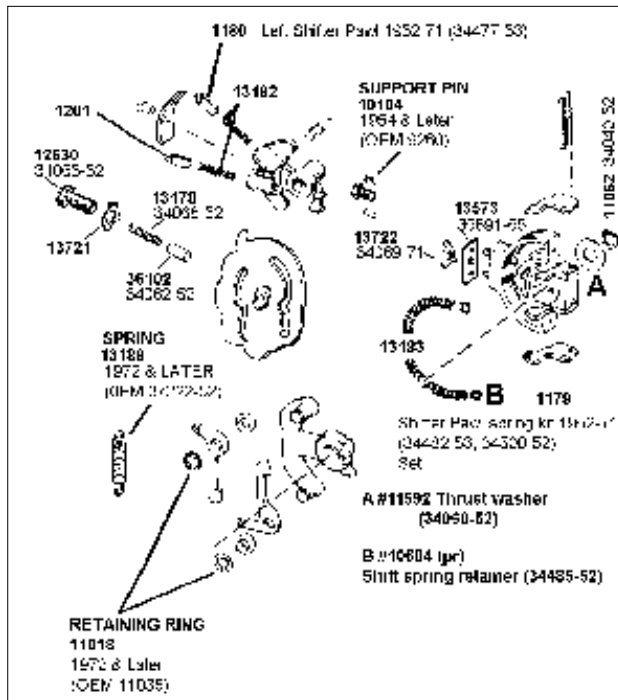


XL 1967-70 Kick and E/Start

Cover replaces 34871-67B and includes PCP# 1398 worm gear kit.

- 45500** Polished
- 45501** Chrome

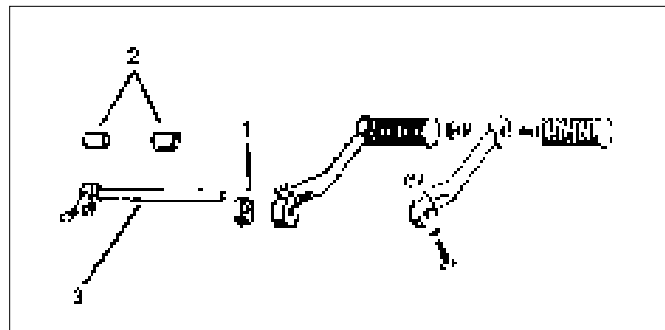
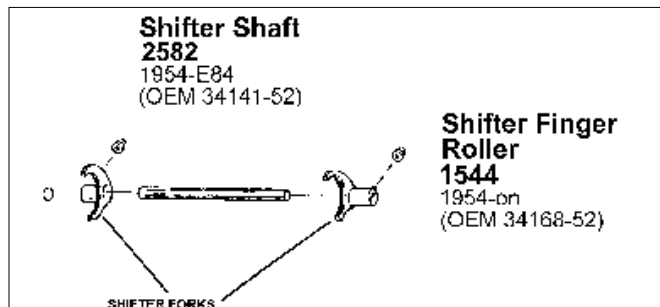
XL Shifter Parts



XL Gear Selector Shafts 1954-on

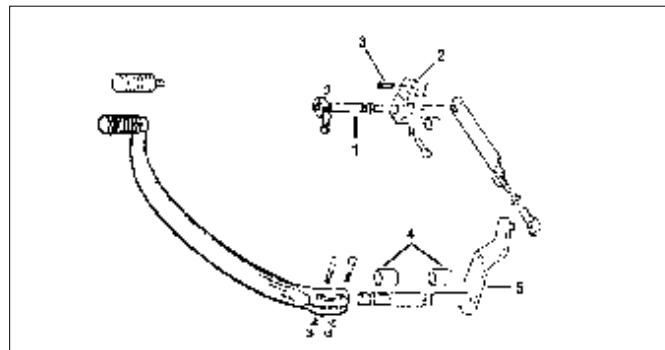
All shafts are splined on shift lever end.

PCP	OEM	Application
1184	34628-54A	(A) 1954-74
2580	34627-75	(B) 1975-76
2581	34628-75	(C) 1977-85



1954-74 XL, KH Shifter Parts

#	PCP	Description
1	14033	Oil seal (34035-52) (5 pack)
2	18550	Bushing (34037-52) (pair)
3	1184	Shifter shaft (34628-54) (each)



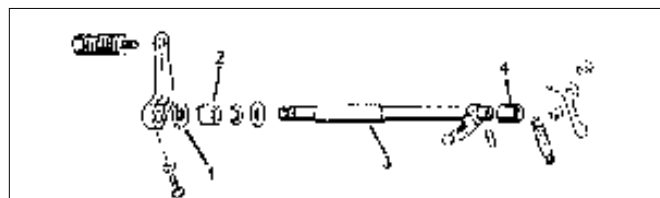
XL Shift Forks 1952-90 4 Speeds

One piece forged, heat treated and precision machined shift forks are available in steel or brass with standard or offset dimensions.

Brass	Steel	Size	OEM
37120	2069	STD	34291-52B
	37127	+0.005	
	37128	-0.005	
37121	37131	+0.010	34297-84
37122	37132	-0.010	34296-84
37123	2164	+0.020	34292-72
37124	2165	-0.020	34293-72
37125		+0.030	
37126		-0.030	
2582	Shifter shaft 1954-84 (34141-52)		
36174	As above 1985-on (34141-84A)		
1544	Shifter finger roller 1954-on (34168-52)		

1975-76 XL, KH Shifter Parts

#	PCP	Description
1	2580	Shifter shaft (34627-75) (each)
2	16563	Inner splined lever (34670-75) (each)
3	10105	Shifter link pin (42269-30) (5 pack)
4	18586	Bushing 1952-77 (47757-52) (pair)
5	36159	Shaft (42548-75)



1977-85 XL, KH Shifter Parts

#	PCP	Description
1	14033	Oil seal 1952-86(34035-52) (5 pack)
2	18550	Bushing 1952-74 (34037-52) (pair)
3	2581	Shifter shaft (34628-75) (each)
4	18549	Bushing (34898-79) (each)

XL 4-Speed Shifter



XL Chrome Sprocket Cover Trim 1982-85

45414 1982-85



Complete XLH, XLCH 4 Speed Trans Gear Unit

Gear assembly unit includes all gears, main and counter shaft, shift forks and shaft assembled to trap door. Right side case races, roller, shims, bearings and shift selector must be ordered separately for the appropriate year. **Note:** Main and countershaft end play and trap door alignment with case must be established and adjusted before final assembly.

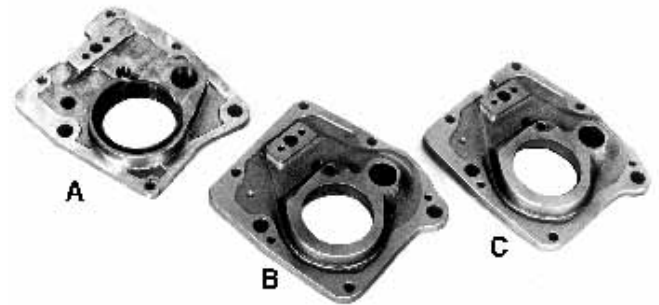
36921 1973-74



XL Chrome Shift Lever Assemblies

Includes Iso shift peg.

PCP	Application
21713	1957-70
21714	1957-70
21715	1971-74
21716	1975-76
21717	1977-85



XLH-XLCH Transmission Trap Doors

All Trock pieces are reinforced.

PCP Description

36164	(A) 1957-83 Door, stock
36165	(B) 1956-76 Door, Trock
36166	(C) 1977-83 Door, Trock
36167	(C) 1984-85 Door w/alternator, stock (34847-84)
10129	1957-90 Dowel (pair) (24578-57)

Trock Replacement Parts

36171 (A) 1954-76 Support (34514-52B)



XL 4 Speed Pawl Carrier 1952-90

Replaces OEM 34009-75A

37114 Assembly

XL Kick Start



XLH Kick Start Conversion

THE ORIGINAL XLH KICK START CONVERSION KIT

Includes all the small, impossible to find hardware usually only available in 10 packs. Order by proper year 1967-79, kick or electric start. The 1979 unit may be used on later models but the engine cases will require machining to accept the kicker shaft.

XLH Complete Kicker Kits

All parts included as illustrated. Check ratchet gear spacing before assembly. Available in kick only sprocket cover or kick & electric sprocket cover (with cut away for starter motor).

PCP	Type	Years
6320	Kick & Electric only	1967-70
6321	K & E	1971-73
6322	Kick only	1971-73
6323	K & E	1973-76
6324	Kick only	1973-76
6325	K & E	1977-78
6326	Kick only	1977-78
6327	K & E	1979

1980-on Cases are not machined from factory to accept kickstarter components. Cases when disassembled can be machined for kick shaft!



Alignment Tool

Use the ratchet plate alignment tool to ease installation of kicker ratchet plate.

26014 Ratchet Align



Rivet Starter Ratchet Plate

Replaces OEM 8215. 5/32 x 1-3/16 x 9/32 dia. Used on all 1957-70 XLCH's.

10000 25 Pack

Rivet Starter Ratchet Plate

Replaces OEM 8216. 5/32 x 7/16 x 9/32 dia. Used on all 1971-79 XLCH's.

10001 25 Pack



XLCH Internal Kicker Gear Kit

Includes all parts pictured, matched ratchet gear set with sleeve, large crank gear, spring, rivets, locks, shaft, all the hard-to-find replacement parts for XLCH repair or XLH conversion. All you need for conversion is cover, kick spring and arm assembly.

Internal Kicker Gear Kits

1505 1954-70

1506 1971-72

1507 1973-80

Starter Ratchet Plate

Replaces OEM 33379-57. Fits all 1957-70 XLCH's.

2374 9-Tooth

1513 18-Tooth



Starter Ratchet Plate

Replaces OEM 33379-71A. Fits all 1971-79 XLCH's.

2375 9-Tooth



XL Ratchet Gear

PCP **Teeth** **Fits**

3423 9 1957-72

1515 18 1957-72

2372 9 1973-79



XLCH Ratchet Gear and Plate Rebuild Kit

Kit includes ratchet gear, ratchet plate with rivets, machined spacer collar.

XL Ratchet Gear Kits

2166 1954-70

2167 1971-72

2168 1973-79